



STACK™

The Next Generation Family of Lay-ins



Meet the STACK™ Family

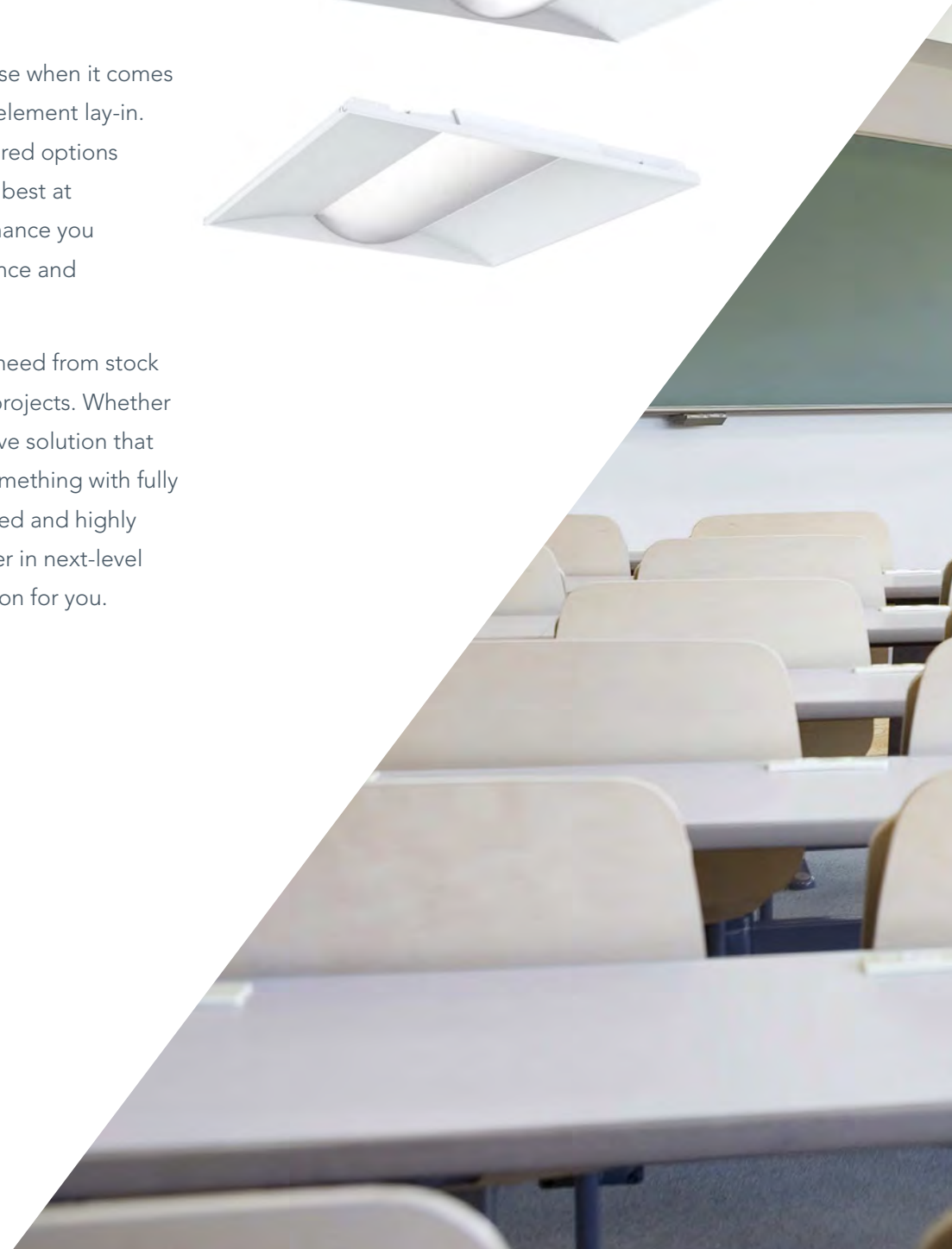
The next generation family of products,
each purpose-designed to be the
solution for any lay-in need.

You shouldn't have to compromise when it comes to selecting your perfect center-element lay-in. Each of the four performance-tiered options are designed to be the absolute best at what they do, giving the performance you deserve while keeping convenience and budget in mind.

The STACK Family covers every need from stock through planned specifications projects. Whether you are looking for a cost-effective solution that doesn't compromise on style, something with fully switchable technology, an updated and highly configurable option, or the leader in next-level specification, STACK has a solution for you.



*Four performance-tiered
products designed to be
the absolute best
at what they do.*





STACK PACK™

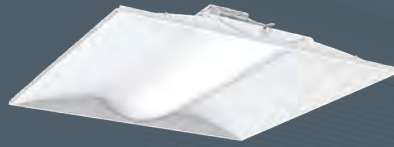
STACK PACK is your high-value, cost-effective, and jobsite friendly fixture.

- The 2'x2' size fits four fixtures in a single box and the 2'x4' size fits two fixtures in a single box, allowing you to reduce on-site waste and maximize lift space.
- Every fixture has Adjustable Lumen Output (ALO) to make it easy to match a variety of different spaces and ceiling heights.
- Most affordable version of the STACK family.

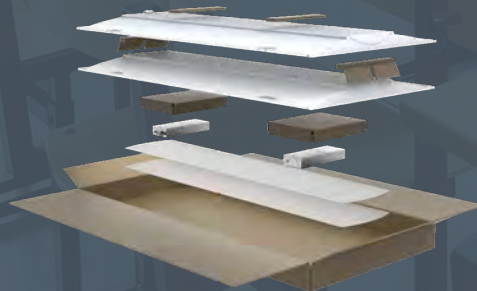
Who is it perfect for?

Contractors who want to spend less time breaking down cardboard boxes and more time doing work that matters.

Design Builders who want the quality and reliability of a Lithonia Lighting® lay-in at a competitive price.



Four 2'x2' fixtures ship per one box



Two 2'x4' fixtures ship per one box





STACK Switch™

STACK Switch brings you the convenience and innovation of switchable technology while keeping the same form factor as the rest of the family.



- Three Switchable Color Temperatures (CCT) and three Adjustable Lumen Outputs (ALO) let you select the right look and feel for your space.
- Save time and never worry about getting to the jobsite and realizing you have the wrong configuration, simply adjust and select what you are looking for before installation.
- Available in 1'x4', 2'x2' and 2'x4'. That's 27 configurations for three fixtures!

Who is it perfect for?

Contractors who want to eliminate the guesswork and be empowered to make game-time installation decisions.

Distributors who need to stock the simplest solutions for their clients while maximizing their shelf space.



Driver box sits on top of fixture



Switchable ALO and CCT



Perfect for healthcare,
commercial office,
K-12 schools, higher
education, retail
and more
applications.



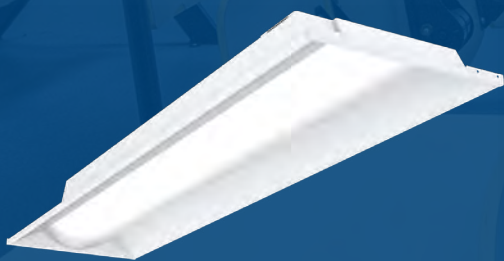
STACK™

STACK is the namesake of the family. It's the updated performance, highly-configurable, aesthetically pleasing center-element that can cover almost anything you're looking for.

- Millions of configurations allow you to win the jobs that require something more than standard.
- Offered with nLight® embedded wired or wireless controls, emergency battery packs, eldoLED® drivers and more.
- Available in 1'x4', 2'x2' and 2'x4'.
- Manufactured in North America for quick lead times, even on non-stock orders.

Who is it perfect for?

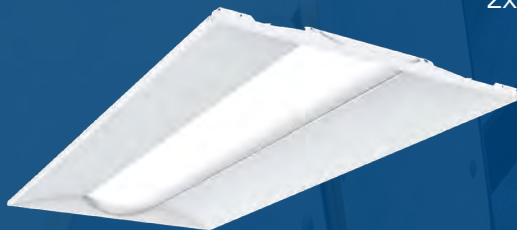
Specifiers / Architects who are ready for the newest center-element with exceptional performance and extensive options at an affordable price.



1x4



2x2 Plenum Side



2x4





STACK Prime™

STACK Prime is here to wow you. It goes above and beyond expectations and looks great while doing it.

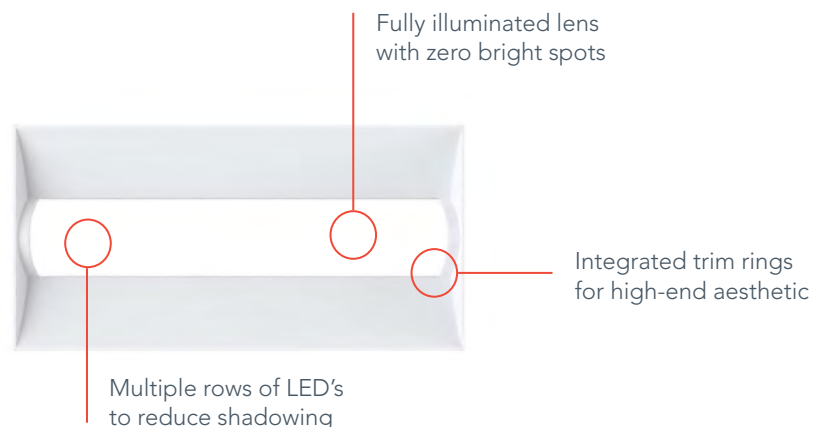


- This premium fixture is fully configurable and ready to go after jobs with next-level specification requirements.
- Multiple rows of LED's reduce shadowing on the reflector surface and create a more fully illuminated appearance on the lens.
- Beveled endplates and curved reflector provide a level of visual comfort virtually unseen in a center-element lay-in.
- Integrated trim rings set STACK Prime apart from the competition and create a more high-end aesthetic while eliminating light leaks.
- 1'x4', 2'x2' and 2'x4' all offered with nLight® Wired and nLight® Air.

Who is it perfect for?

Specifiers / Architects who want to offer their end users the most visually comfortable space while knowing the performance is there to match.

Engineers who are specifying high-end, aesthetically pleasing spaces with the best in energy efficiency, low UGR and architectural interest.





STACK™ Solutions

At a Glance

STACK PACK	STACK SWITCH
<p>Perfect for budget conscious projects that want to minimize jobsite waste and have a positive environmental impact</p>	<p>Perfect for stock and jobsite flexibility</p>
STACK	STACK PRIME
<p>Perfect for meeting the needs of multiple projects with one configurable fixture</p>	<p>Perfect for highly specified opportunities where design, quality of light and low glare are critical</p>



Embed nLight® AIR controls to provide functionality to your premier space.



Now



User-friendly install



Enhanced energy savings



Code compliance

Tomorrow



Scalability



Space configuration



Future-ready

nLight embedded fixtures offer:	Customers get:
Manual Dimming	Convenience and visual comfort for occupants
Motion Sensing and/or Daylight Harvesting	Energy savings and code compliance
Fixture or Group Level Control	Ability to configure lighting to the space requirements
Flexibility	Ease of fixture moves, adds and changes
Wireless Wall Switch (nLight AIR only)	Ease and flexibility of placement
Astronomical and Time of Day Scheduling	Energy savings and building security
Scalable Solution	nLight controls to grow with your business
Future-Ready	nLight platform to set foundation for future upgrades and capabilities

All capabilities above are available through either wired or wireless nLight controls. You choose!



To learn more about STACK
visit www.LithoniaLighting.com



Join the conversation - follow us on social media.