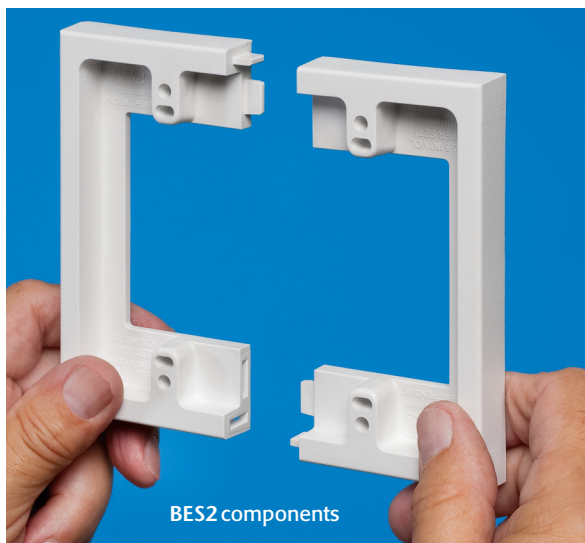
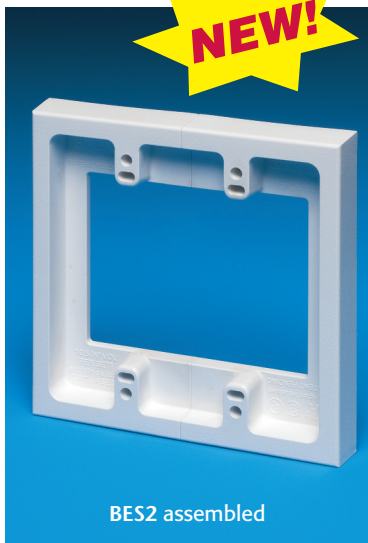


# Non-metallic Box Extender

*Extends a shallow box 5/8" • Make your own multi-gang units*

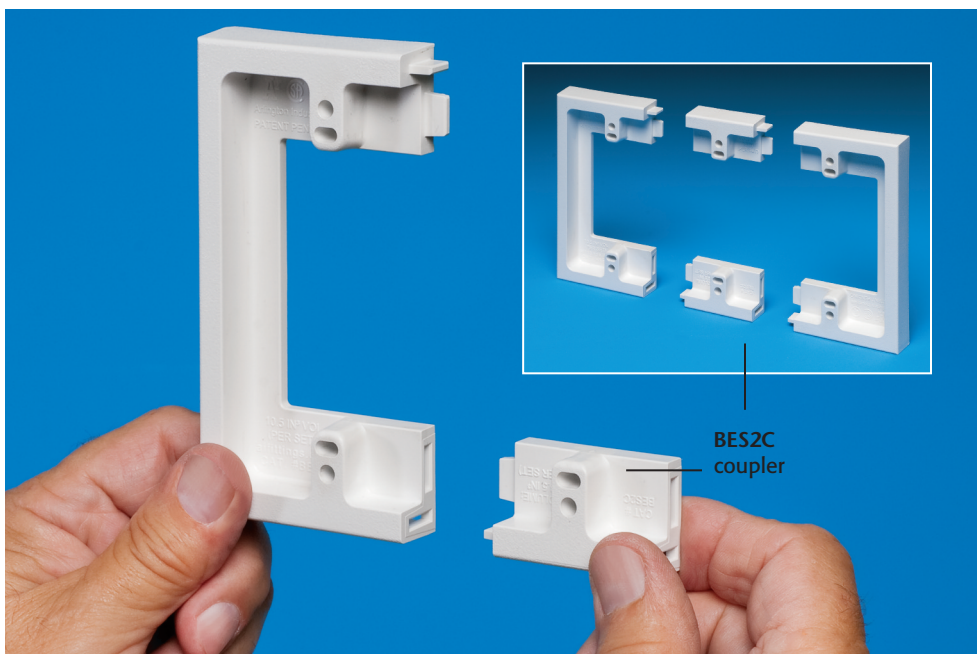


BES2 components



BES2 assembled

Create a two-gang box extender by snapping the two-piece BES2 together



BES2C  
coupler

Arlington's BES series box extenders add height and depth to an electrical box, allowing you to install large items, like a dimmer switch, in a shallow box.

There's no need to remove the existing shallow box. Just attach a BES box extender to add 5/8 of an inch of height to an installed box.

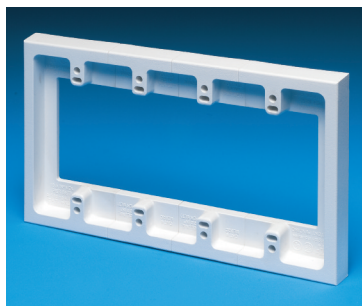
- Fast, easy and convenient, so you save time and money!
- Adds to existing box volume:
  - BES1 adds 5.3 cu. inches
  - BES2 adds 10.5 cu. inches
  - Each pair of BES2C couplers adds an additional gang *and* 3.5 cubic inches.
- Finishes with any standard or mid-size wall plate
- Paintable
- cULus Listed

**Need multiple gang styles?**

**EASY!** Just snap together a BES2 and as many BES2C couplers as you need to create the unit you want.

Patent pending

Made in USA 



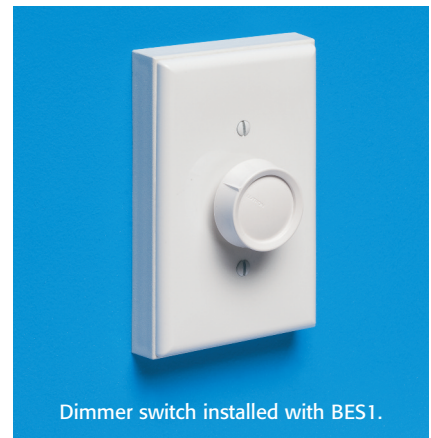
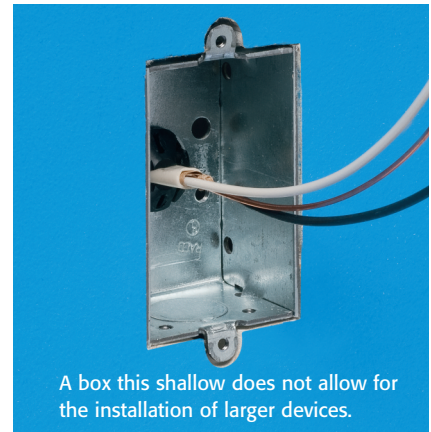
**Arlington®**

1 Stauffer Industrial Park  
Scranton, PA 18517  
800/233.4717 • Fax 570/562.0646  
[www.aifittings.com](http://www.aifittings.com)

# Non-metallic Box Extender

**NEW!**

*Adds 5/8" height & depth to a shallow box • Saves time, money*



CATALOG NUMBER	UPC/DCI/NAED MFG. #018997	DESCRIPTION BOX EXTENDERS	UNIT PKG	STD PKG
BES1	48976	One-gang	1	10
BES2	48977	Two-gang (two pcs)	1	10
BES2C	48979	One-gang coupler set Adds one gang to BES2	1	10



**Arlington®**

1 Stauffer Industrial Park  
Scranton, PA 18517

800/233.4717 • Fax 570/562.0646

www.aifittings.com

Made in USA

Distributed by