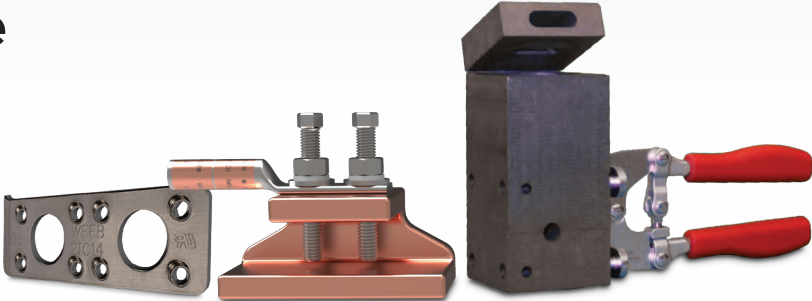




STAY GROUNDED AND BONDED

AT&T Ordering Guide

For products that are
now approved by
ATT-TP-76416

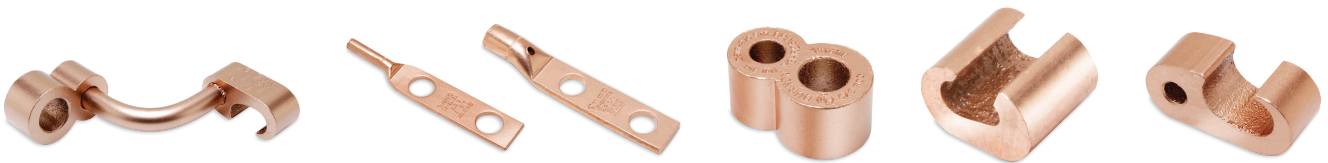


BURNDY® has been providing reliable results since 1924. Our connectors, grounding products, installation tooling, and accessories are designed to perform in the most demanding conditions, helping strengthen the essential communications infrastructure that keeps us connected.

Hyground®

Compression Grounding System

Our high-quality **grounding system** is known for long-term performance and reliability. Approved for direct burial, the Hyground system meets stringent safety and performance requirements, including UL 467 and IEEE 837. System connectors install easily in any weather in less than three minutes, no permit or training required.



thermOweld®

Exothermic Grounding

The **thermOweld exothermic** connection process is a simple, efficient method of welding copper to copper or copper to steel. The permanent molecular bond created ensures the connection will not loosen or corrode over time. And the thermOweld system requires no external power; it can use the EZ Lite Remote® Electric Ignition System or a standard flint ignitor.





WEEB® Washer

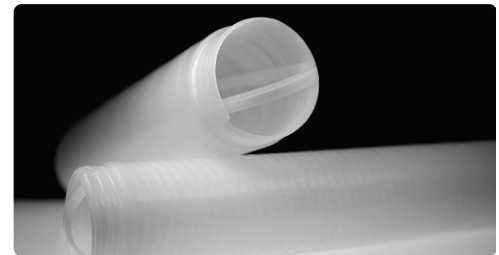
The patented Wiley **Washer Electrical Equipment Bond**, or **WEEB**, washer features gripping teeth that penetrate metal, creating a strong bonding connection between the lug and any coated metal component. WEEB washer connections reduce installation time and create a cleaner work environment by eliminating the need to remove nonconductive coatings prior to creating the bonding connection. For use with 2-hole HYLUG™ connector or equivalent. UL 467 tested (UL recognized). The penetrating teeth limit corrosion points and provide anti-rotation properties delivering consistent and tested connections.



Clear Cold Shrink

CCSK Series

Clear Cold Shrink provides a simple, safe, and reliable way to insulate connectors. The UL-Listed clear silicone rubber provides a living seal that expands and contracts with temperature and cable load variations. This dynamic seal reduces moisture levels and prevents chemicals from reaching and damaging the connection.



Ordering Information

Cable	Tube Length	Part Number	MMID	
			VzT	VzB
2 AWG to 350 kcmil	6"	CCSC110600	11380975	10882899
	9"	CCSC126900	11380973	10882858
3/0 AWG to 500 kcmil	6"	CCSC126600	11380974	10882835
	9"	CCSC146900	11380971	10882831
250 to 600 kcmil	6"	CCSC146600	11380972	10882857
	9"	CCSC200900	11380969	10882863
500 to 1000 kcmil	6"	CCSC200600	11380970	10882830
	9"	CCSC200900	11380969	10882863
	12"	CCSC2001200	11380968	10882874

GCS Constrictor™

Ground Clamp to Steel Connectors

The **GCSYA-WEEB** and **GCS2YA series connectors*** are used to ground cable to a tower structure in applications where drilling or securing a hot permit is either not possible or not preferable. The GCSYA-WEEB is assembled with a WEEB® washer to reduce one-hole lug rotation. Installation is simple—no power tools required. cULus Listed.

Ordering Information

Cable Gauge	Application	Cable Type	Diameter Range	Part Number	AT&T Item Number
AWG 8	Single Hole	Steel	1/8" - 5/8"	GCSYA8CWEEB	CEQ.48569
	Double Hole			GCS2YA8C	CEQ.48574
AWG 6	Single Hole	Steel	1/8" - 5/8"	GCSYA62CWEEB	CEQ.48573
	Double Hole			GCS2YA6C	CEQ.48571
AWG 4	Single Hole	Steel	1/8" - 5/8"	GCSYA4CWEEB	CEQ.48572
	Double Hole			GCS2YA4C	CEQ.48570

*cULus listed to grounding and bonding equipment standard



Burndy—Bonded. Grounded. Connected. Since 1924.



A proud member of the Hubbell family.

©2022 Burndy. All rights reserved.
Hubbell and the Hubbell logo are registered trademarks or trademarks of Hubbell Incorporated.
All other trademarks are the property of their respective owners.
www.hubbell.com/burndy | Customer Service 1-800-346-4175
International 603-647-5299 | Canada 1-800-465-7051

LI-BURN-CTW-BR-EN-00406