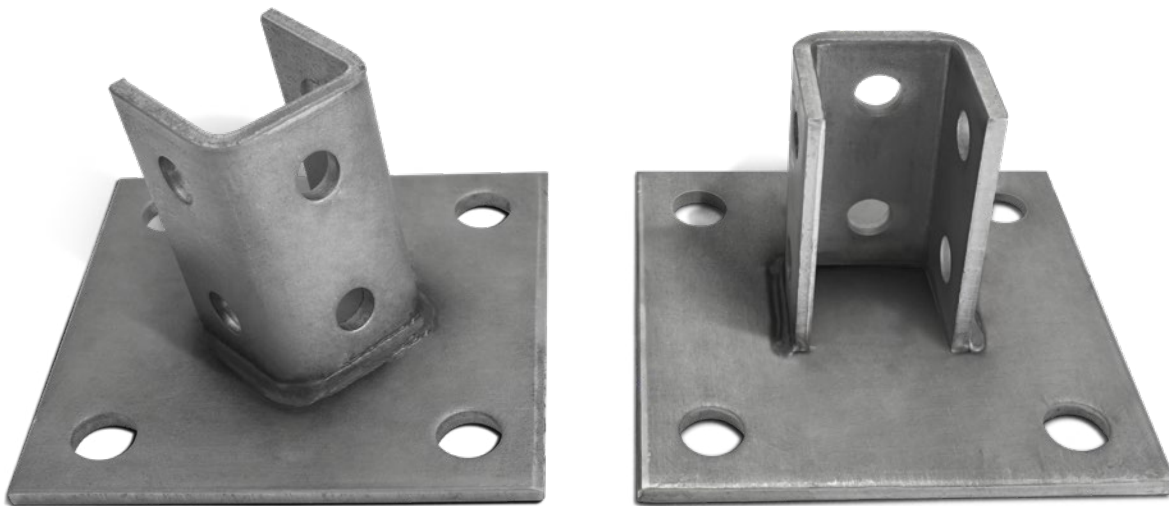


Strut Hardware >

Base Plates



Stainless



Description

Robroy Stainless Base Plates are designed to be floor mounted to support upright strut installations. They are available in 316 stainless steel and hole size is 9/16".

Catalog No.	Description	Weight Each (lbs.)
RSF-9601-316	Channel Base Plate 316	3.27
RSF-9601-SQ-316	Square Channel Base Plate 316	3.27