



CorePro MainsFit (UL Type-B) T8

12T8/COR/48-840/MF18/G/DIM 25/1

CorePro, LEDtube, T8, 47-1/4 inch, 12 W, 4000 K, 1800 lm, 50000 hour(s)

The CorePro MainsFit (UL Type B) lamps are designed to be the perfect retrofit solution to move from traditional fluorescent lamps to energy saving LEDs. This ballast bypass lamp has everything needed built into the lamp with proven energy savings, long life (up to 50k hours), surge suppression and industry leading safety features. All lamps in the CorePro MainsFit family are double-ended to help simplify the installation. In addition, all lamps meet the Philips standards for light quality so that end users will be in a comfortable environment regardless of the CorePro MainsFit lamp type.

Product data

General Information		Color Consistency	
Cap-Base	G13	Color Consistency	6SCDM
Nominal lifetime	50,000 hour(s)	Color rendering index (CRI)	80
Switching Cycle	50,000	LLMF At End Of Nominal Lifetime (Nom)	70 %
Lighting Technology	LEDtube	Operating and Electrical	
Light Technical		Line Frequency	50 to 60 Hz
Color Code	840 [CCT of 4000K]	Input Frequency	50 to 60 Hz
Beam Angle (Nom)	220 degree(s)	Power Consumption	12 W
Luminous Flux	1,800 lm	Lamp Current (Max)	104 mA
Color Designation	Cool White (CW)	Lamp Current (Min)	48 mA
Correlated Color Temperature (Nom)	4000 K	Wattage Equivalent	32 W
Luminous Efficacy (rated) (Nom)	150.00 lm/W	Starting Time (Nom)	0.5 s
		Warm-up time to 60% light	0.5 s

CorePro MainsFit (UL Type-B) T8

Power Factor (Fraction)	0.9
Voltage (Nom)	120-277 V
UL Type	UL Type B

Temperature

T-Case Maximum (Nom)	158 °F
----------------------	--------

Controls and Dimming

Dimmable	Only with specific dimmers
----------	----------------------------

Mechanical and Housing

Bulb Finish	Frosted
Bulb Material	Glass
Product Length	47-1/4 inch
Bulb Shape	T8
Net Weight (Piece)	0.441 lb

Approval and Application

Energy Saving Product	Yes
Approval Marks	RoHS compliance UL certificate DLC compliance

EU RoHS compliant	Yes
Ambient temperature range	-4 °F to 113 °F

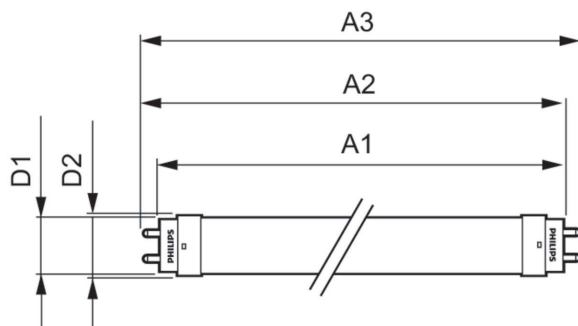
Application Conditions

can it be used in closed luminaires	Yes
Wireless Technology	Not applicable

Product Data

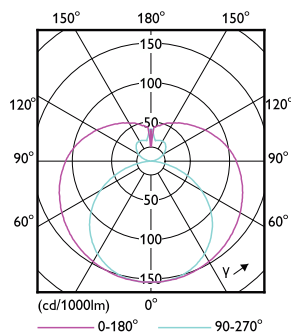
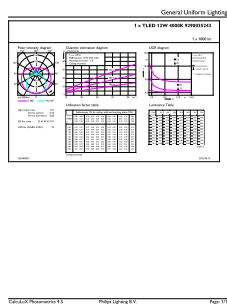
Order product name	12T8/COR/48-840/MF18/G/DIM 25/1
Full product name	12T8/COR/48-840/MF18/G/DIM 25/1
Order code	579383
Material Nr. (12NC)	929003524304
Numerator - Quantity Per Pack	1
EAN/UPC - Product/Case	046677579388
Numerator - Packs per outer box	25
EAN/UPC - Case	50046677579383

Dimensional drawing



Product	D1	D2	A1	A2	A3
12T8/COR/48-840/MF18/G/DIM 25/1	1-1/16 inch	1-1/8 inch	47-3/16 inch	47-1/2 inch	47-3/4 inch

Photometric data

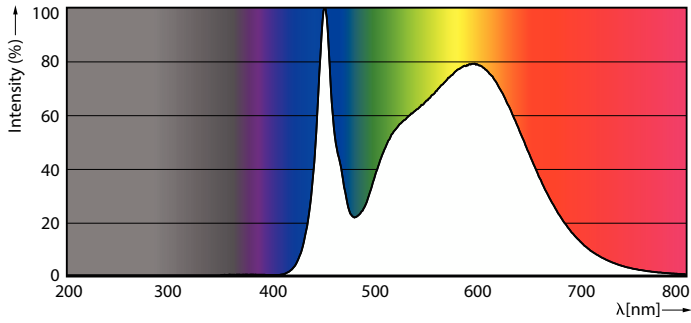


General uniform lighting - 12T8/COR/48-840/MF18/G/DIM 25/1

Light Distribution Diagram - 12T8/COR/48-840/MF18/G/DIM 25/1

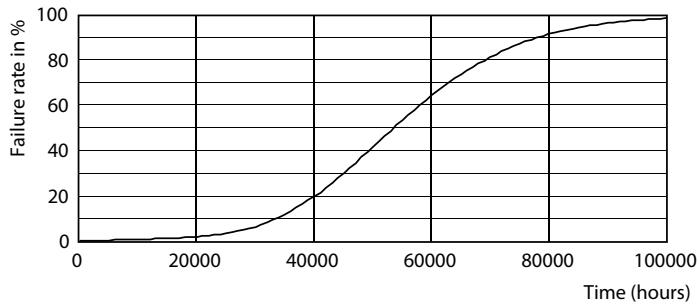
CorePro MainsFit (UL Type-B) T8

Photometric data

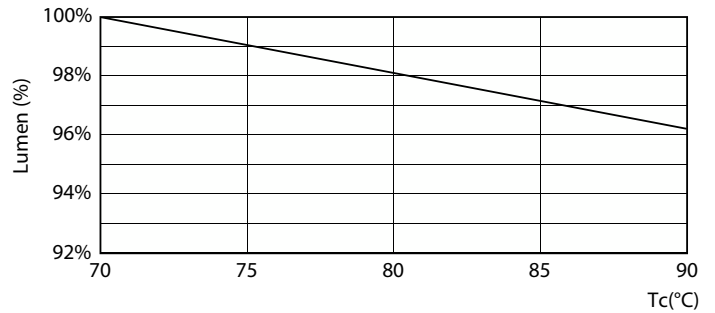


Spectral Power Distribution Colour - 12T8/COR/48-840/MF18/G/DIM 25/1

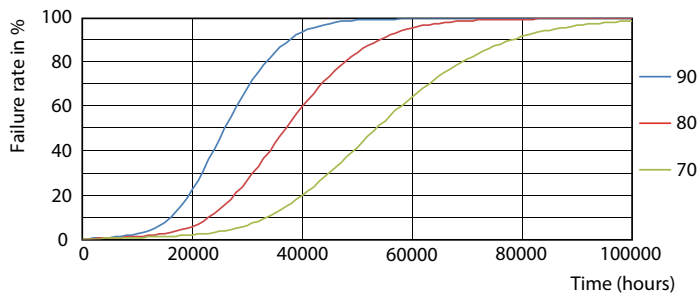
Lifetime



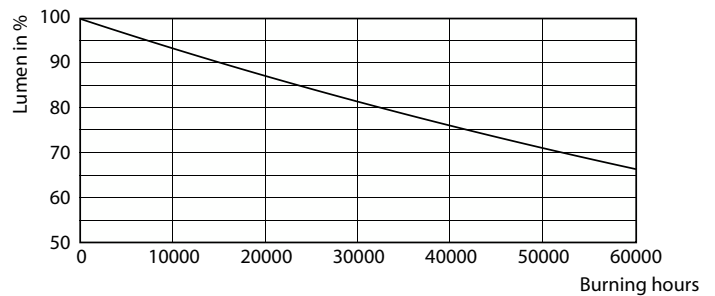
Life Expectancy Diagram



Lumen Maintenance Diagram - 12T8/COR/48-840/MF18/G/DIM 25/1



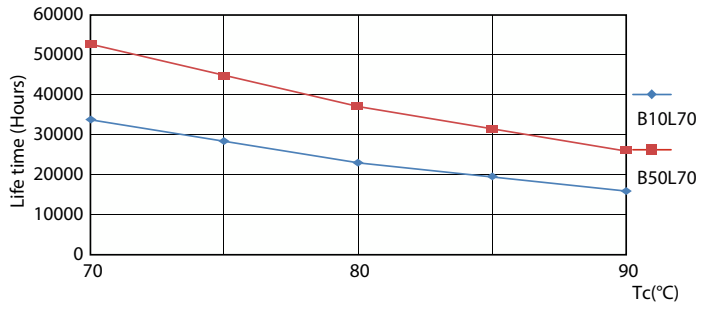
LEDtube 50K 7090 FailureRate-LED



Lumen Maintenance Diagram - 12T8/COR/48-840/MF18/G/DIM 25/1

CorePro MainsFit (UL Type-B) T8

Lifetime



LifetimeVsTc

