

15/25kV	900A Deadbreak Elbow	w/o Test Point	K675LR-W2X
---------	----------------------	----------------	------------



Features:

- Fully rated 15/25kV, 900 Amp Deadbreak Elbow
- Fully shielded, fully submersible molded rubber housing
- 100% peroxide-cured construction includes insulation and conductive EPDM materials
- Can be easily connected or disconnected using standard hand tools and equipment in a de-energized state
- Optional accessories allow visible external separation, by-pass, isolation, dead-ending, grounding, and testing as well as adding taps, surge arrestors, and fault current indicators

K675LR Elbow Connector (without Test Point)

Applications:

The Elastimold® K675LR (without test point) is designed to provide fully shielded, dead-front submersible cable connections to high-voltage apparatus. The K675LR can be used through 28kV with conductor range from #2 AWG to 1250 kcmil for aluminum and copper conductors and insulation diameters from .640" to 1.935". When used on metallic tape shield or drain wire cable, an ECS cable seal grounding device is recommended. The K675LR can be mated with other Elastimold® Products including:

- K675CP
- K675BIP
- K675RTP
- K675RTW
- K675S1
- K650J2, K650J3, K650J4

Ratings:

Meets ANSI/IEEE Standard 386, Latest Revision

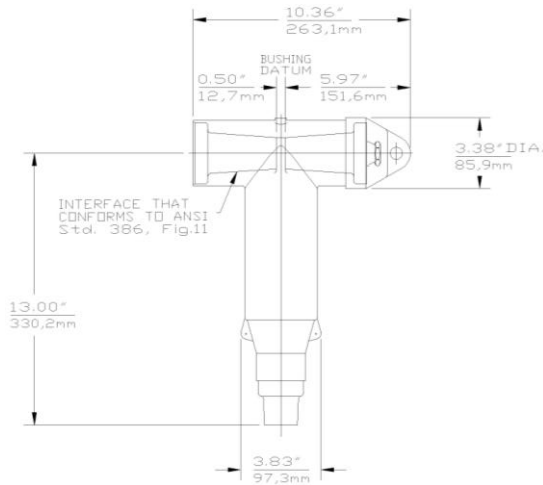
For 15kV Voltage Class:

8.3kV Max Phase-to-Ground – Operating Voltage
 14.4kV Max Phase-to-Phase
 95kV BIL – Impulse Withstand (1.2 x 50 microsecond wave)
 34kV AC – One minute withstand
 53kV DC – 15 minutes withstand
 11kV AC – Corona Extinction @ 3pC sensitivity
 900 Amp – Continuous
 25kA Sym – 10 Cycles Momentary

For 28kV Voltage Class:

16.2kV Max Phase-to-Ground – Operating Voltage
 28kV Max Phase-to-Phase
 140kV BIL – Impulse Withstand (1.2 x 50 microsecond wave)
 45kV AC – One minute withstand
 84kV DC – 15 minutes withstand
 21.5kV AC – Corona Extinction @ 3pC sensitivity
 900 Amp – Continuous
 25kA Sym – 10 Cycles Momentary

15/25kV	900A Deadbreak Elbow	w/o Test Point	K675LR-W2X
---------	----------------------	----------------	------------



CATALOG NUMBER SELECTION

Step 1 (W)

Determine the insulation diameter of the cable. Select the insulation letter code that best straddles the insulation diameter from W table below. Insert code into catalog number.

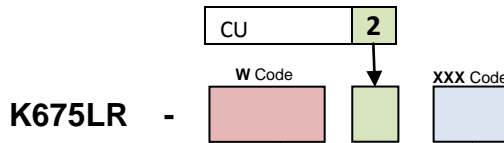
Step 2

Choose the proper connector material type and insert it into the catalog number.

Step 3 (X)

Choose the proper compression lug code according to the conductor size from the Conductor Code Table. Insert code into catalog number.

- For Dimensions of the Stud, Insulating Plug w/Cap, Lug, and Cable Adapter see individual spec. sheets.



Example:

The ordering number for a 900 Amp Elbow Connector for a 4/0 compressed, 175 mil wall cable with an insulation diameter of .865" to .950" is K675LR-H2270.

Cable Insulation Diameter in inches		Cable Insulation Diameter in millimeters		Symbol for W
MIN.	MAX.	MIN.	MAX.	
0.640	0.820	16.256	20.828	F
0.760	0.950	19.304	24.130	G
0.850	1.050	21.590	26.670	H
0.980	1.180	24.892	29.972	J
1.090	1.310	27.686	33.274	K
1.180	1.465	29.972	37.211	L
1.280	1.430	32.512	36.322	LM
1.370	1.630	34.798	41.402	M
1.515	1.780	38.481	45.212	N
1.725	1.935	43.815	49.149	P

X Code	AWG or kcmil		mm2	Connector Only
	Strand./Compr.	Solid/Compact	Compact	Copper
210	-	2	-	03702210
220	2	1	35	03702220
230	1	1/0	50	03702230
240	1/0	2/0		03702240
250	2/0	3/0	70	03702250
260	3/0	4/0	95	03702260
270	4/0	250	125	03702270
280	250	300	-	03702280
290	300	350	150	03702290
300	350	400	185	03702300
310	400	450	240	03702310
320	450	500/550	-	03702320
330	500	600	250/300	03702330
350	600	700	-	03702350
360	650	750	400	03702360
380	700/750	900	-	03702380
390	800	-	-	03702390
400	900	1000	500	03702400
410	1000	-	-	03702410
420	-	1250	-	03702420
440	1250	-	-	03702440

Each kit contains the following:

- | | | |
|---|--------------------------|----------|
| 1 | Elbow connector housing | K675BLR |
| 1 | Copper compression lug | 03702XXX |
| 1 | Copper Stud | 675SA |
| 1 | Insulated Plug w/ Cap | K675BIP |
| 3 | Tube, lubricant | 82-08 |
| 1 | Cable adapter | 655CA-W |
| 1 | Installation Instruction | IS-0230 |
| 1 | Installation Instruction | IS-0249 |
| 1 | Crimp chart | CC-0050 |