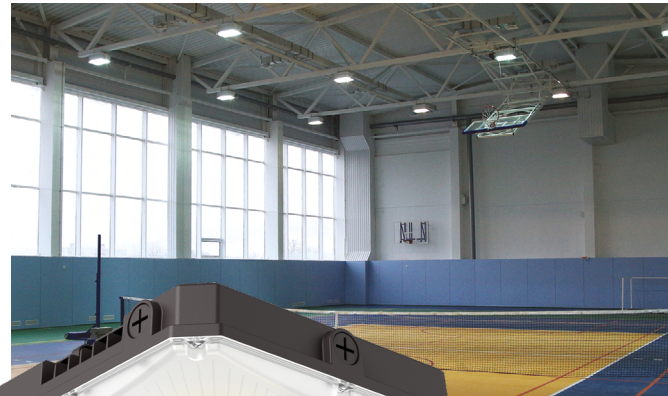




LED SLIM CANOPY

- ▶ **DESIGN** - LED SLIM CANOPY has a die-cast aluminum housing with excellent heat dissipation and anti-glare PC lens with even light distribution. It is designed to operate on 120-277V circuits with a 0-10V dimmable driver. The fixture can be either surface mounted or pole mounted.
- ▶ **SURGE PROTECTION** - 5kV protects the fixture from voltage spikes and current surges.
- ▶ **COLOR AND POWER SELECTABLE** - You can choose either a 3,000K warm white, 4,000K cool white or 5,000K daylight color temperature, and change the power with a simple switch.
- ▶ **APPLICATION** - Perfect commercial or industrial solution for parking garages, gas stations, stairwells, passageways, underpasses, and many other applications. It is also Wet Locations rated.
- ▶ **ADVANTAGES** - With calculated lifespan with more than 50,000 hours, these fixtures are made to last decades under normal operation! ASD provides a 5-year limited warranty along with ETL and DLC Premium certifications to guarantee top quality products and safety!

<i>Catalog number</i>	
<i>Notes</i>	
<i>Type</i>	



Model	Watts	Voltage	Dimmable	Lumens	CCT	Finish	Dimensions (LxWxH)
ASD-CAN05-A40BR	20/30/40W	120-277 V	0-10 V	up to 6,061 lm	3CCT (3,000/4,000/5,000 K)	Bronze	10-1/16" x 10-1/16" x 3-5/16"
ASD-CAN05-A70BR	40/60/70W	120-277 V	0-10 V	up to 10,795 lm	3CCT (3,000/4,000/5,000 K)	Bronze	10-1/16" x 10-1/16" x 3-5/16"

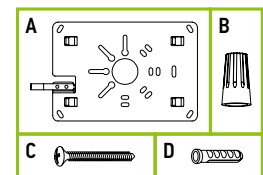
For detailed luminous flux information please refer to Annex 1, page 2.

PRODUCT SPECIFICATIONS:

Construction & Materials			Environmental system		
Housing	Aluminum		Work environment	Suitable for Wet Locations, IP65	
Reflector	SPCC		Operating temperature	-22°F to 122°F (-30°C to 50°C)	
Lens	PC		L-70 Life	R > 36,000 hrs; C > 141,000	
Finish	Bronze		Dimming compatible controls		
Weight	ASD-CAN05-A40BR	4.6 lbs (2.1 kg)	Brand	Leviton	Lutron
	ASD-CAN05-A70BR	5.1 lbs (2.3 kg)	Models	IP710-LFZ	MS-Z101
Optical system			Regular and voluntary certifications		
Color temperature	3CCT switch (3,000/4,000K/5,000 K), 5,000 K by default		5-year limited warranty		
CRI	> 80		DesignLights Consortium (DLC) listed (Classification: Premium)		
Electrical system			UL certified E473804		
Input voltage	120-277 V				
Max input current	ASD-CAN05-A40BR	0.4 A			
	ASD-CAN05-A70BR	0.65 A			
Inrush current (Action time)	120 A (4 S)				
Off state power	0W				
Power consumption	ASD-CAN05-A40BR	20/30/40W			
	ASD-CAN05-A70BR	40/60/70W			
Power factor	> 0.9				
Output voltage	130 V				
Max output current	ASD-CAN05-A40BR	0.32 A			
	ASD-CAN05-A70BR	0.55 A			
Surge protection DM/CM	4 kV / 5 kV				

PACKAGE CONTENTS:

Description	Quantity
LED Slim Canopy	1
Mounting plate (A)	1
Wire nut (B)	3
Self-tapping screw (C)	4
Anchor (D)	4
Box	1



For most up-to-date spec sheets please refer to asd-lighting.com



LED SLIM CANOPY

INSTALLATION GUIDE

IMPORTANT SAFETY INFORMATION:

Please read all the instructions below before installation.

- ▶ Make sure that the supply voltage corresponds to the rated product voltage.
- ▶ The product must be installed by a qualified electrician in accordance with the National Electrical Code and corresponding local codes.
- ▶ If the product is damaged, do not use it.

⚠ WARNING

Risk of personal injury – read and follow all warnings and installation instructions. Keep or give to the owner for future reference.

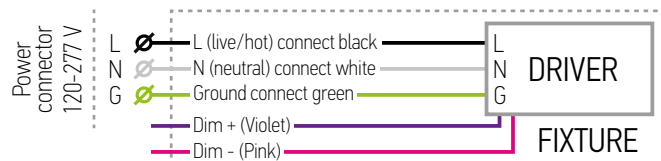
Risk of cuts: Wear gloves to prevent cuts or abrasions when removing from carton, handling, installing, and maintaining this product.

Risk of electric shock: This product must be installed in accordance with the applicable installation code by a person familiar with the construction and operation of the product and the hazards involved.

Risk of Fire: Minimum 194°F supply conductors. Consult a qualified electrician to ensure correct branch circuit conductor.

ASD® assumes no responsibility for claims arising out of improper or careless installation or handling of this product.

ELECTRICAL SCHEMATIC DIAGRAM:



ANNEX 1

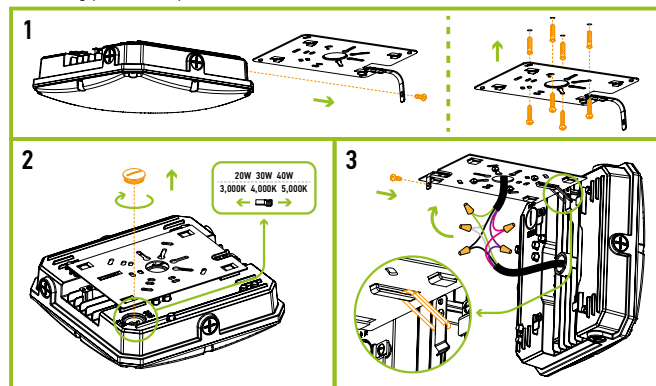
Model	Watts	3,000 K	4,000 K	5,000 K
ASD-CAN05-A40BR	20W	2,971 lm	3,174 lm	3,209 lm
	30W	4,205 lm	4,539 lm	4,553 lm
	40W	5,537 lm	6,053 lm	6,061 lm
ASD-CAN05-A70BR	40W	6,329 lm	6,783 lm	6,961 lm
	60W	8,646 lm	9,309 lm	9,264 lm
	70W	9,884 lm	10,757 lm	10,795 lm

ORDERING INFORMATION

Model	UPC	Pcs. per carton	Carton size	Carton weight	UPC
ASD-CAN05-A40BR	810128113489	4	24' x 12' x 10.2'	21.8 lbs	10810128113486
ASD-CAN05-A70BR	810128114417	4	24' x 12' x 10.2'	23.6 lbs	10810128114414

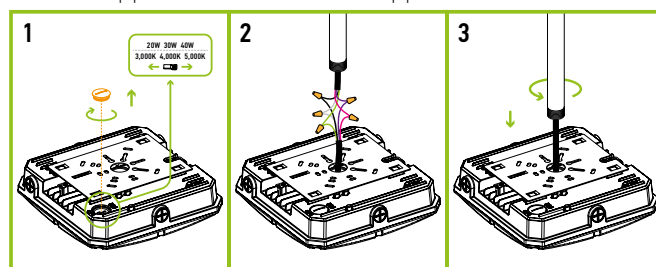
SURFACE MOUNT WITH A MOUNTING PLATE:

1. Remove the securing screw out of the mounting plate, detach the mounting plate from the fixture housing and secure the plate to a j-box on the ceiling using anchors and self-tapping screws.
2. Adjust color temperature and power (if needed) by unscrewing one big cap in the corner of the fixture and set switches to necessary values.
3. Use hanger on the mounting plate to hold the fixture in place and connect the wires: Black to Black, White to White, Green to Green, Dim+ to Violet, Dim- to Pink and secure connection to the Junction box in the ceiling. Slide the fixture into the mounting plate clamps and secure it with a screw.



POLE MOUNTING INSTALLATION:

1. Adjust color temperature and power (if needed) by unscrewing one big cap in the corner of the fixture and set switches to necessary values.
2. Thread the wires into the pipe, and connect them with terminal caps: Black to Black, White to White, Green to Green, Dim+ to Violet, Dim- to Pink.
3. Screw the pipe into the fixture. Use NPT3/4" pipe.



For most up-to-date spec sheets please refer to asd-lighting.com