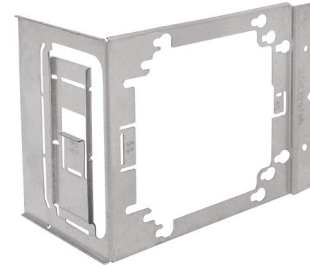


SPECIFICATION & FEATURES

BOX MOUNTING ADAPTERS 6" VERSION

DESCRIPTION:

Orbit Industries' Box Mounting Adapter mounts 4" or 4-11/16" square boxes directly-to-studs. Unique key-hole pattern allows box to be turned 90°. The bracket features Far Side Support for up to 6" deep studs, eliminating most of the box movement. Box latches hold boxes in place without needing to tighten box screws. Compatible with Standard & Adjustable Rings vertically or horizontally.



CERTIFICATION:

UL file E310661



FEATURES:

- Mounts 4" & 4-11/16" square boxes directly-to-stud (wood or metal)
- Can be mounted side-by-side on the same stud without drywall bulging
- Unique key-hole pattern allows boxes to be turned 90°
- Adjustable Back Support helps maintain rigidity once installed
- Integrated tool-less extension for use with up to 6" deep studs
- Bendable box latch tabs securely hold 4" or 4-11/16" sq. box in place without need to tighten box screws. Skip the hassle of tightening box screws until the final ring installation, making installation process more efficient and convenient.
- Compatible with Standard and Adjustable Rings. Install all *AR1G & *AR2G rings vertically or horizontally.
- Bent tabs provide additional rigidity

SPECIFICATION:

Material: Sheet Steel
Color: Galvanized
Mfg. Process: Stamped

CONFIGURATION DATA:

Part No.	Description	Std.Pkg.
BMA-26	Box Mounting Adapter with Far Side Support For up to 6" Wall Studs	25

