

Female x Female Threaded End Connection

Series W Carbon Steel

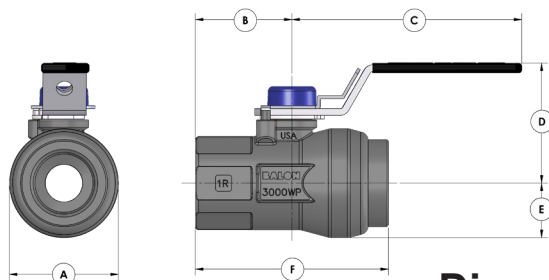
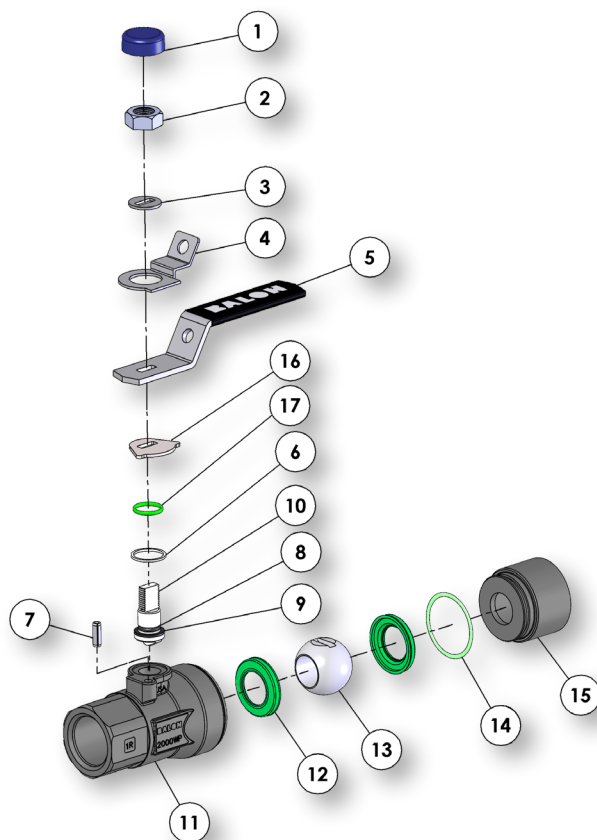
- 100% Made in USA
- 2000 to 3000 PSI WP
- 1/4" Through 1"
- Welded Body Construction
 - Certified Low Emission Per API 641
 - Fire Safe Design
 - Welded Top Works Keeps Travel Stops Intact When Handle is Removed
 - 316 Stainless Steel Ball and Stem Standard
 - Locking Device Standard
 - Multi-Seal Seats (See page B-5)



Material Description

ITEM	PART NAME	MATERIAL (STANDARD)
1	Weather Guard	Polypropylene
2	Stem Nut	Carbon Steel
3	Spacer	CarbonSteel
4	Lock Plate	Carbon Steel
5	Handle*	Carbon Steel
6	Stem Washer	TFE
7	Stop Pin	Carbon Steel
8	Stem O-Ring	Fluorocarbon
9	Stem Seal	TFE
10	Stem	316 Stainless Steel
11	Body	ASTM A216 WCB
12	Ball Seat	Nylon/Polyketone
13	Ball	316 Stainless Steel
14	Body O-Ring	Fluorocarbon
15	Adapter	ASTM A108 1018
16	Stop Plate	Stainless Steel
17	O-Ring	Fluorocarbon

* Handle and locking device standard on all Series W Ball Valves.



Dimensional Data

SIZE	CATALOG NUMBER	PORT	WP	A	B	C	D	E	F	LBS.	Cv
.25x.375x.25	1/4F-W93-SE	.375	2000	1.17	1.13	3.50	1.90	.58	2.25	0.60	-
.25x.375x.25	1/4F-W03-SE	.375	3000	1.21	1.13	3.50	1.90	.61	2.25	0.65	-
.50x.375x.50	1/2R-W93-SE	.375	2000	1.38	1.28	3.50	1.90	.69	2.63	0.80	6
.50x.375x.50	1/2R-W03-SE	.375	3000	1.44	1.28	3.50	1.90	.72	2.63	0.91	6
.50x.50x.50	1/2F-W93-SE	.50	2000	1.42	1.37	3.50	1.98	.71	2.75	0.87	-
.50x.50x.50	1/2F-W03-SE	.50	3000	1.46	1.37	3.50	1.98	.73	2.75	0.95	-
.75x.75x.75	3/4F-W93-SE	.75	2000	2.09	1.69	4.87	2.41	1.04	3.50	2.19	-
.75x.75x.75	3/4F-W03-SE	.75	3000	2.19	1.69	4.87	2.41	1.04	3.50	2.34	-
1x.75x1	1R-W93-SE	.75	2000	2.19	1.94	4.87	2.41	1.09	3.88	2.25	30
1x.75x1	1R-W03-SE	.75	3000	2.19	1.94	4.87	2.41	1.09	3.88	2.65	30