

Wall Mount cabinet Accessories

Conversion Kits

Convert an RE2 to an RE4 for added space; includes RE4 door, (2) RE4 extender brackets, and (2) 4U bottom hinged patch panel brackets

Color	Catalog No.
Black	REKUB
Gray	REKU

For use with RE only.



Recessed Mounting Kits

Enables recessed mounting with louvered section at bottom for cabinet ventilation; includes trim ring, ¼" x ⅝" sheet metal screws and 12-24 x 1¼" pan head screws

Height Inches (mm)	Catalog No.
24" (607)	REKR24
32" (813)	REKR32
42" (1067)	REKR42

For use with RE-BOX cabinets only.



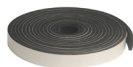
Gasket Kit

Protect against dust and water to enhance performance of fan and filter; includes (1) roll adhesive-backed foam gasket

Length (ft)	Thickness	Catalog No.
10'	1/8" x 1/2"	REKG1
30'	3/4" x 1/16"	HWKGT²

¹For use with RE only.

²For use with HSQ only.



Left Hand Hinge Kit

Use to reverse door; includes (2) sets of left hand door hinges

Catalog No.	REKI
-------------	------

For use with RE-BOX cabinets only.



Fiber Optic Bracket

Accepts one fiber FSP adapter panel; occupies no rear panel spaces; includes fiber optic bracket

Catalog No.	REKFP
-------------	-------

For use with HSQ, RE, and IR.



Rebox Fiber Bracket

Cabinet Hardware, Patch Panel Bracket, LGX Bracket Rebox.

Catalog No.	RESPLBKT
-------------	----------



Equipment Shelves, Cantilevered

Black; includes (1) shelf and mounting hardware kit

Description	Dimensions	Catalog No.
Solid	2U x 19"W x 14"D	MCCCS19
Perforated	2U x 19"W x 14"D	MCCCS19P
Perforated	2U x 19"W x 11"D	HSC11P

For use with HSQ, HLQ, HEQ, and IR.



Equipment Shelves, Stationary

For use with 36" deep enclosures; Black; includes (1) shelf and mounting hardware kit

Description	Dimensions	Catalog No.
Perforated	17.7" W x 29.2" D	MCCPSHLF

For use with HSQ only.



Padlock Hasp Kit

Includes: (2) padlock hasps, (4) ¼"-20 carriage bolts, hex nuts and washers

Catalog No.	REKH
-------------	------

For use with RE-BOX cabinets only.



110/66 Block Mounting Rails

Provides mounting for 110 and 66 blocks; mounts to rearwall; includes (2) 110/66 block mounting rails and (20) 10-24 x 1/2" screws

RWU	Catalog No.
2	REK110

For use with RE-BOX cabinets only.



Sound Dampening Kit

Dampen noise generated from active equipment in cabinet; includes polyurethane foam pieces, pre-cut to line cabinet interior

Catalog No.	REKS
-------------	------

For use with RE-BOX cabinets only.



Note: Plexiglas is a registered trademark of Altuglas International, Arkema Group.