

SIZES 16 THRU 64

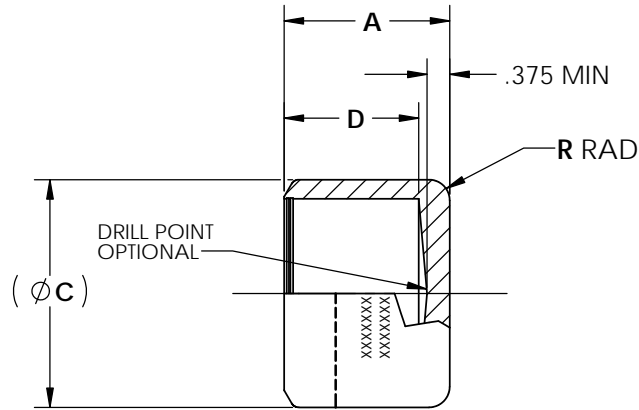


TABLE 1: DIMENSIONS

PART NUMBER	PIPE SIZE (NPS)	A ± .030	(Ø C)	D ± .030	R ± .015
PLK1350D16	1	3.000	2.000	2.250	.500
PLK1350D24	1 1/2	3.000	2.500	2.250	.500
PLK1350D32	2	3.500	3.000	2.750	.500
PLK1350D40	2 1/2	3.500	3.750	2.750	.500
PLK1350D48	3	4.000	4.375	3.250	.500
PLK1350D56	3 1/2	4.000	5.000	3.250	.500
PLK1350D64	4	4.000	5.500	3.250	.500

SIZES 80 THRU 96

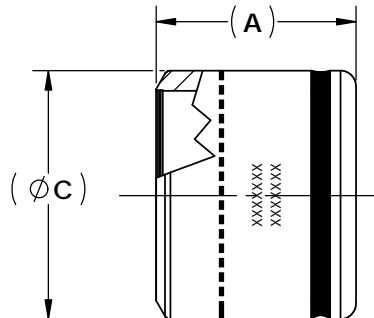
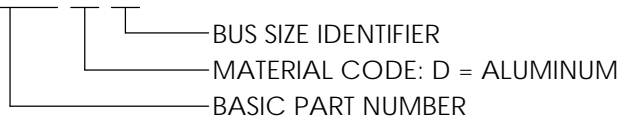


TABLE 2: DIMENSIONS AND BILL OF MATERIAL

ASSEMBLY PART NUMBER	PIPE SIZE (NPS)	(A)	(Ø C)
PLK1350D80	5	6.188	6.500
PLK1350D96	6	6.438	8.000

LEGEND

PLK1350 - CUT SHEET D XX



THIS DRAWING AND THE INFORMATION CONTAINED HEREIN ARE THE PROPERTY OF DMC POWER AND SHALL NOT BE COPIED, REPRODUCED OR DISCLOSED WITHOUT EXPRESS AUTHORIZATION BY DMC POWER.