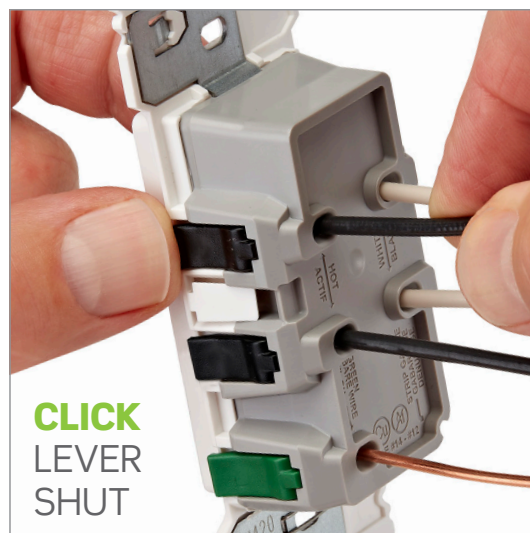
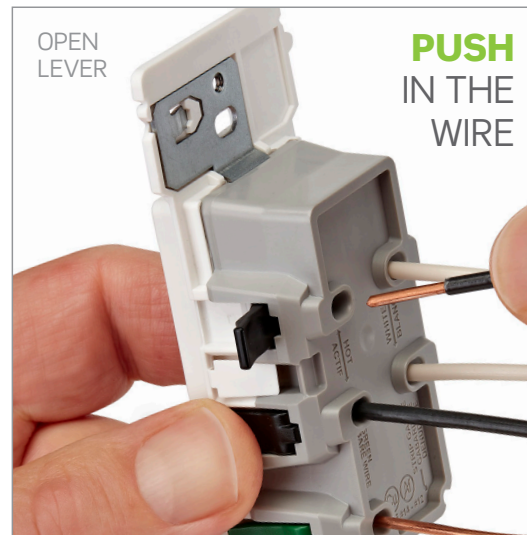


# Lever Edge™

THE FUTURE OF WIRING  
IS AS EASY AS...



**EXPERIENCE A NEW  
UL APPROVED TERMINATION  
METHOD FOR WIRING DEVICES**

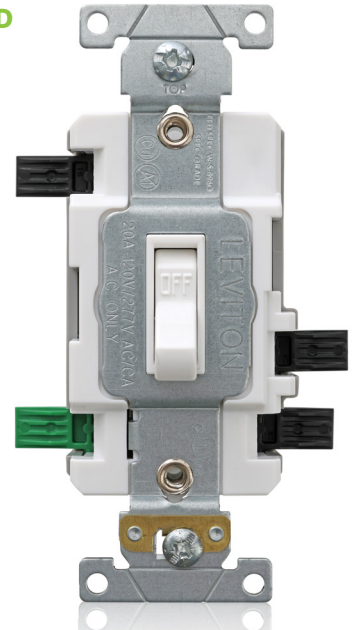
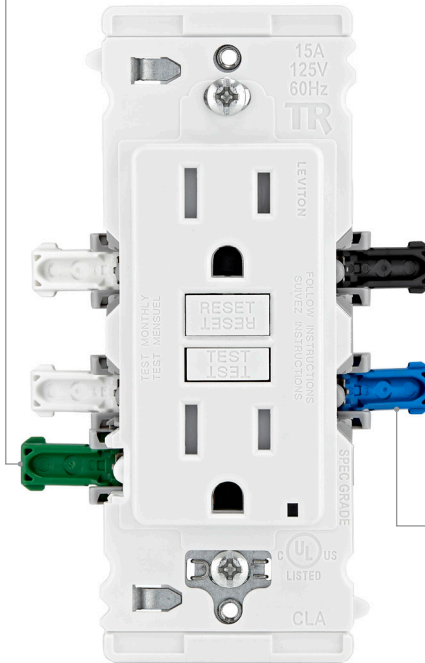
- EASY INSTALLATIONS
- TIME AND LABOR SAVINGS
- SAFE AND SECURE WIRING

ACCEPTS MULTIPLE COPPER  
WIRE SIZES AND TYPES



INCREASED SAFETY  
NO EXPOSED METAL PARTS

INDUSTRY-FIRST UL CERTIFIED  
RAPID SCREWLESS GROUNDING  
WIRE TERMINATION



UNIQUE BLUE LEVER  
QUICKLY IDENTIFIES THE LOAD  
HOT CONNECTION TO MINIMIZE  
LINE/LOAD REVERSAL  
RISK ON GFCIS

REDUCE RISK OF MISWIRING  
COLOR-CODED LEVER TERMINALS

# ON THE JOB, TIME IS MONEY!

SAVE TIME AND LABOR WITH FAST AND EASY INSTALLS.

TONGUE AND GROOVE DESIGN  
FOR EASIER ALIGNMENT IN  
MULTI-GANG INSTALLATIONS\*



LONGER AND WIDER STRAP  
COMPATIBLE WITH MIDWAY WALLPLATES,  
AND WITH STANDARD SIZED WALLPLATES  
WHEN BREAKAWAY TAB IS REMOVED\*

\*On residential switches and receptacles



NEED TO RE-WIRE?  
SIMPLY RE-OPEN THE LEVER  
AND TAKE OUT THE WIRE.  
NO STRUGGLE.

WIRING THAT GETS  
BETTER WITH TIME!  
AFTER SUBJECT TO VIBRATION,  
WIRE RETENTION RESULTS  
INCREASED BY ALMOST 40%\*\*

\*\*On commercial switches and receptacles using 10AWG

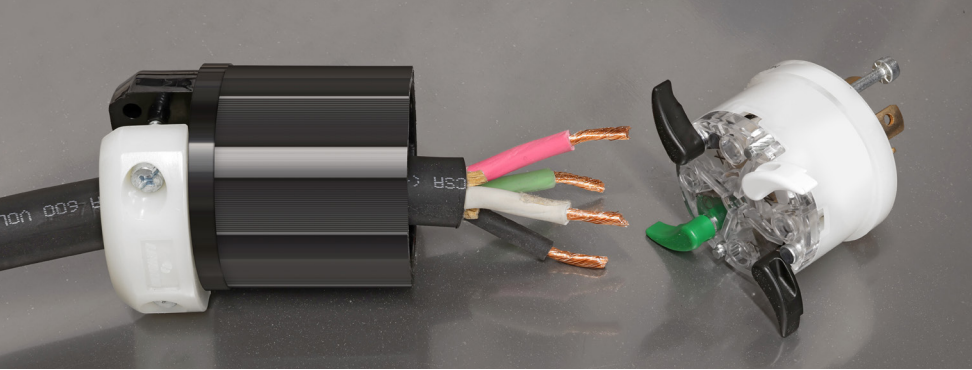
# STRONG, SECURE WIRING CONNECTIONS

WE MEET UP TO **3.8X THE UL REQUIREMENTS** FOR WIRE RETENTION PULL FORCE\*

**DURABLE NYLON HOUSING**  
WITH HB OR BETTER FLAMMABILITY RATINGS



**SECURE GRIP**  
WIDER RIBS ON HOUSING STRENGTHENS GRIP WHILE INSTALLING



**EASY TO VIEW STATUS**  
CLEAR BACK COVER TO EASILY VIEW CONNECTION STATUS



\*For commercial and industrial Lever Edge devices, data available upon request

# ORDERING INFORMATION

## RESIDENTIAL GRADE DEVICES

### RECEPTACLES

Cat. No.	Rating	Description
EGFT1-W	15 Amp / 20 Amp Feed-Through, 125 Volt	Tamper-Resistant GFCI, White
EGFW1-H0W	15 Amp / 20 Amp Feed-Through, 125 Volt	Weather- and Tamper-Resistant GFCI, White
E5325-W	15 Amp / 20 Amp Feed-Through, 125 Volt	Tamper-Resistant Decora Receptacle, White
E5825-W	20 Amp 125 Volt	Tamper-Resistant Decora Receptacle, White

### SWITCHES

Cat. No.	Rating	Description
E5601-W	15 Amp 120/277 Volt	Single Pole Rocker Switch
E5603-W	15 Amp 120/277 Volt	3-Way Rocker Switch

### DIMMER

Cat. No.	Rating	Description
ESL01-1LW	120 Volt 60 Hz 150 W LED/CFL/INC	Decora Slide Dimmer

## COMMERCIAL GRADE DEVICES

### RECEPTACLES

Cat. No.	Rating	Description
E5362-SW	20 Amp 125 Volt	Duplex Receptacle
ET563-W	20 Amp 125 Volt	Tamper-Resistant Duplex Receptacle

### SWITCHES

Cat. No.	Rating	Description
E1221-SW	20 Amp 120/277 Volt	Single Pole Toggle Switch

## BLACK & WHITE

### PLUGS

Cat. No.	NEMA Configuration
5266E	NEMA 5-15P
5366E	NEMA 5-20P
2311E	NEMA L5-20P
5466E	NEMA 6-20P
2321E	NEMA L6-20P
2621E	NEMA L6-30P
4770E	NEMA L7-15P
2411E	NEMA L14-20P
2711E	NEMA L14-30P

### CONNECTORS

Cat. No.	NEMA Configuration
5269E	NEMA 5-15R
5369E	NEMA 5-20R



**THE FUTURE  
OF WIRING  
IS HERE.**



### FOR PRODUCT DETAILS & ORDERING INFORMATION

Scan or Visit  
[leviton.com/leveredge](http://leviton.com/leveredge)

### Leviton Manufacturing Co., Inc.

201 N Service Rd, Melville, NY 11747  
Telephone: 1-800-323-8920 • FAX: 1-800-832-9538  
Tech Line: 1-800-824-3005 (M-F 8AM-10PM; Sat 9AM-7PM; Sun 9AM-5PM)

© 2026 Leviton Manufacturing Co., Inc. All rights reserved.  
NEC® is a registered trademark of the National Fire Protection Association, Quincy, MA 02169