



Product Datasheet

ANDERSON FARGO

STTH0606 -- Coupler, Bronze Bolted



Coupler, Tube to Tube, Bronze Bolted, 3/4 to 3/4 IPS tubes

Product Specifications

Family Image



Couplers

Couplers



STTH Series
Tube to Tube, Straight
Bronze Bolted Couplers

PDF Catalog Page

[Click HERE to view the web page.](#)

Clamping Hardware Material

Stainless Steel

Dimension A

2.50 in (63.5 mm)

Dimension B

2.50 in (63.5 mm)

Dimension C

3.00 in (76.2 mm)

Dimension J

0.50 in (12.7 mm)

Dimension L

5.00 in (127.0 mm)

Dimension W

3.00 in (76.2 mm)

Material Type

Non-Standard

UPC Code

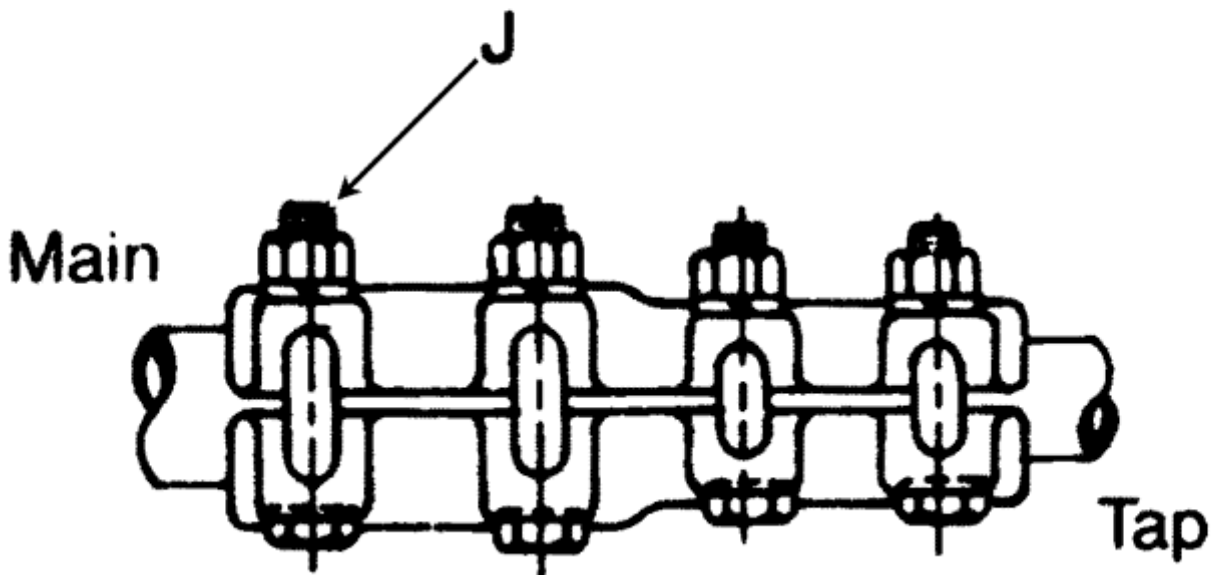
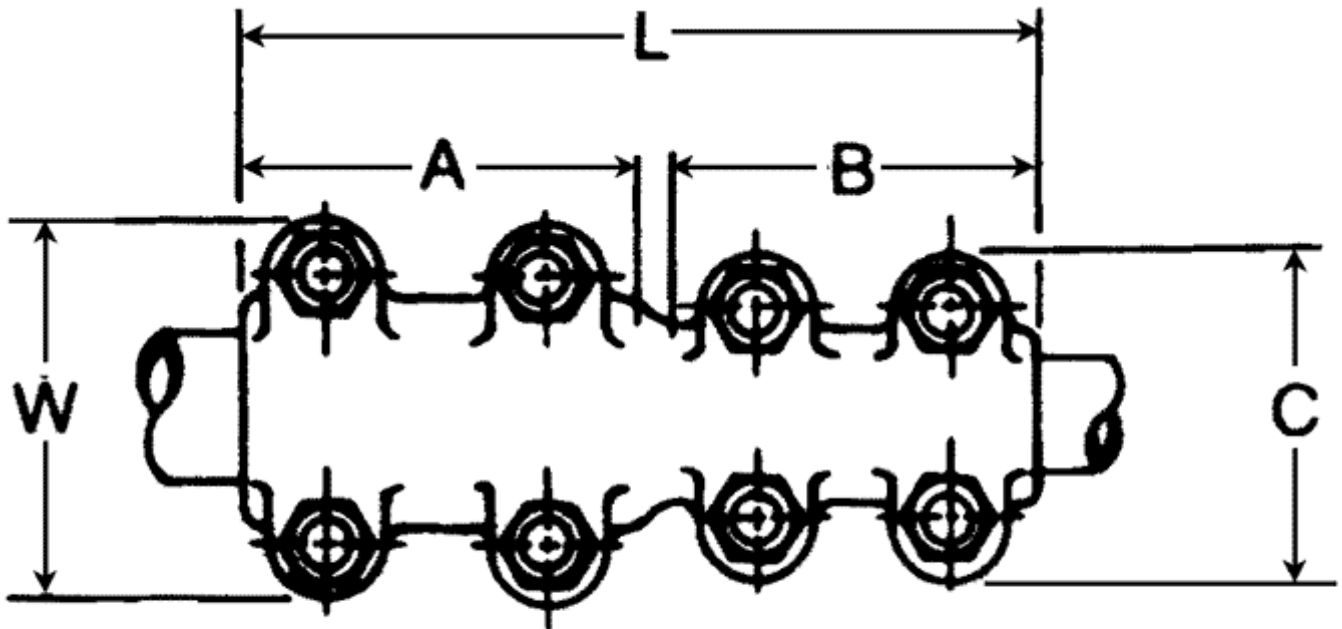
09635932692

Standard Package

6

Standard Package Unit	Each
Min Order Qty	1
Weight / Ea.	2.45 lbs

Compressed Product Number
STTH0606



Catalog Home



NOTE: Because Hubbell has a policy of continuous product improvement, we reserve the right to change design and specifications without notice.