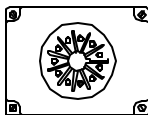
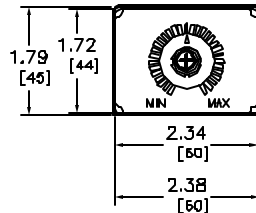


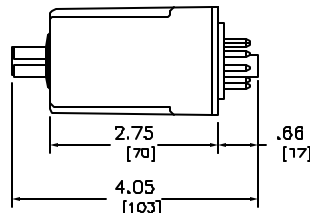
TOP VIEW



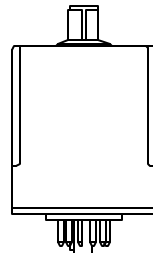
BACK VIEW



FRONT VIEW



RIGHT VIEW



BOTTOM VIEW

VARIABLE TIME DELAY

KNOB ADJUSTABLE TIMING RANGE	CODE (1)	
	OFF DELAY	ONE SHOT
0.1-10 SEC	21	41
0.3-30 SEC	22	42
0.6-60 SEC	23	43
1.2-120 SEC	24	44
1.8-180 SEC	25	45
0.1-10 MIN	26	46
0.3-30 MIN	27	47
0.6-60 MIN	28	48
1.2-120 MIN	29	49

VOLTAGE CODES

VOLTS	CODE (2)
12 VAC/DC	V36
24 VAC/DC	V14
48 VAC/DC	V17
120 VAC/110 VDC	V20

CONTACT ARRANGEMENT: DPDT (2NO & 2NC)  
CONTINUOUS CURRENT RATING: 1DA

NOTE: A RETAINING STRAP DESIGNED TO HOLD  
TIMER IN SOCKET DURING HEAVY VIBRATION  
IS AVAILABLE WITH PN#8501-NH7.

AC VOLTS	AC AMPS				HP	DC VOLTS	DC AMPS		
	INDUCTIVE 35% PF			RES. 75% PF MAKE BREAK AND CON- TINUOUS			INDUCTIVE		RES. MAKE BREAK AND CON- TINUOUS
	MAKE	BREAK	CON- TINUOUS				MAKE	BREAK	
120	3D	3	10	10	1/3	30	3	3	10
240	15	1.5	10	10	1/2				

Catalog Number: 9050-JCK(1)(2)  
 Ratings: SEE CHART  
 UL File/CCN: CCN-E42240-NLX2  
 CSA File/Class: LR25490-3211-04  
 Meets Standards: -  
 Weight: -  
 Wire Size: -  
 Terminal torque: -  
 Mounting Hwd.: -

DUAL DIMENSIONS: INCHES  
MILLIMETERS

GENERAL PURPOSE PLUG-IN TIMER (8 PIN)  
9050-JCK(1)(2)



DWG# E0703401-01  
NO.