

DeviceNet Media System

Bulletin Numbers 1485A, 1485C, 1485F, 1485G, 1485K, 1485P, 1485R, 1485T

| Topic | Page |
|---------------------------------------|------|
| DeviceNet Flat Media System | 2 |
| DeviceNet Round Media | 20 |
| DeviceNet Auxiliary Power Round Media | 35 |

KwikLink™ Lite Flat Media Cable Spools

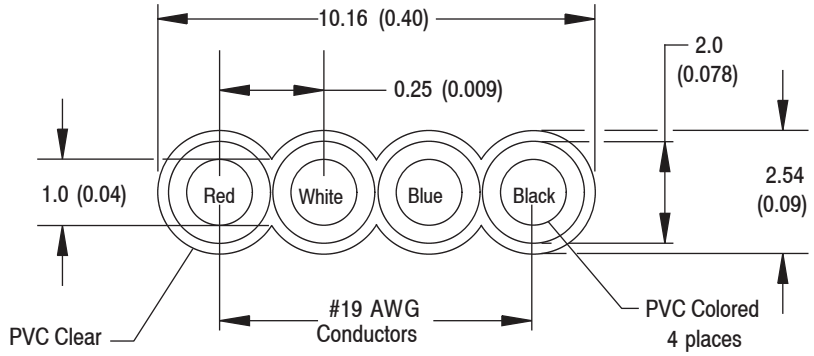


Specifications

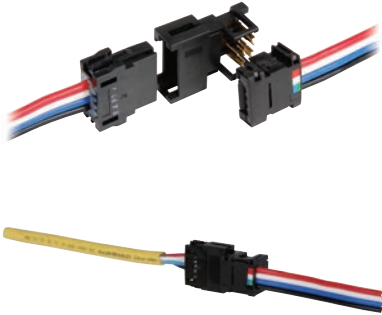
| | |
|-------------------------------|--|
| Certifications | UL and cUL Listed |
| Cable Type | 4 conductor unshielded |
| Contact Material | Tinned annealed copper |
| Cable Rating | CL2 2c/AWG 19 and 2c/AWG 21 90°C, CL2 and CM Certified |
| Home Run Connection | 26 mm (1.02 in.) |
| Operating Temperature [C (F)] | -10...+90 ° (14...194 °) |

Approximate Dimensions

Dimensions are in millimeters (inches). Illustrations are not drawn to scale.



Trunk Line Connector, Drop-Line Connector, and Flat to Thin Round Converter IDC



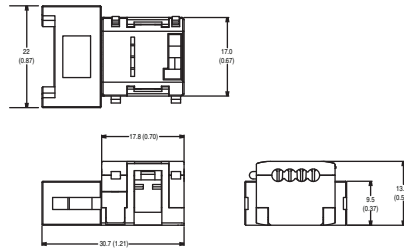
Specifications

| | |
|---------------------------------|--|
| Safety Ratings | |
| Certifications | UL Recognized |
| Physical Characteristics | |
| Connector Style | Housing:glass-fiber reinenforced PBT cover: PA66 |
| Contact Material | Phosphor bronze/nickel substrate |
| Electrical | |
| Current Capacity | 4 A |
| Voltage | 30V DC |
| Environmental | |
| Enclosure Type Rating | IP20 |
| Vibration | 1.52 mm (0.06 in.) displacement, 10...500 Hz |
| Operating Temperature [C (F)] | -35...+55 ° (-31...+131 °) |
| Storage Temperature [C (F)] | -35...+80 ° (-31...+176 °) |

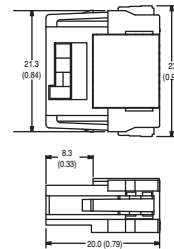
Approximate Dimensions

Dimensions are in millimeters (inches). Illustrations are not drawn to scale.

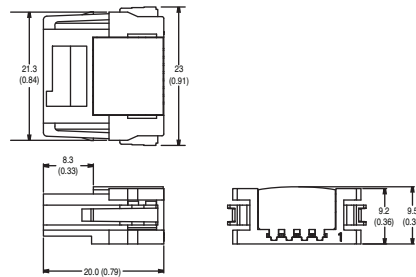
Trunk Line Connector



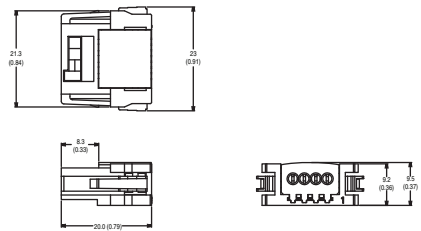
Drop Line Connector



Terminating Resistor

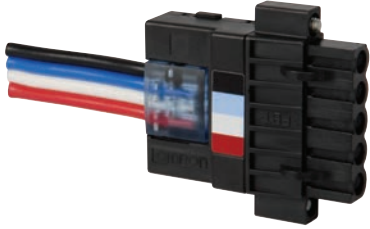


Flat Media to Round Converter



KwikLink™ Lite Flat Media

Five-Pin Open-Style Connector



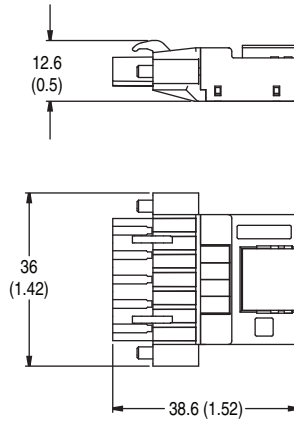
Open-Style Connector, IDC

Specifications

| Safety Ratings | |
|---------------------------------|---------------------------------|
| Certifications | UL Recognized |
| Physical Characteristics | |
| Connector Style | Housing: PBT -V0 |
| Contact Material | Gold-plated |
| Electrical | |
| Current Capacity | 4 A |
| Voltage | 25V DC |
| Environmental | |
| Enclosure Type Rating | IP20 |
| Vibration | 0.75 mm (0.03 in.), 10...500 Hz |
| Operating Temperature [C (F)] | -40...+100 ° (-40...+212 °) |
| Storage Temperature [C (F)] | -40...+100 ° (-40...+212 °) |

Approximate Dimensions

Dimensions are in millimeters (inches). Illustrations are not drawn to scale.





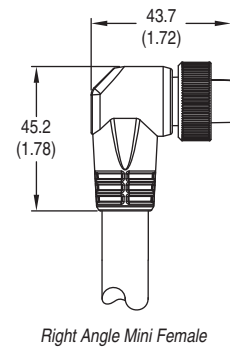
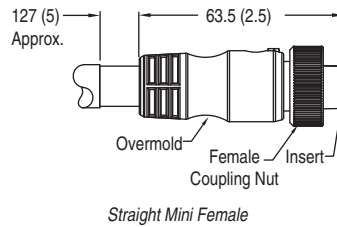
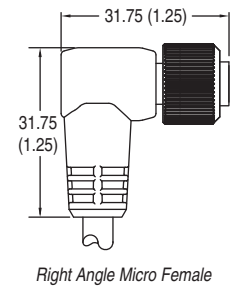
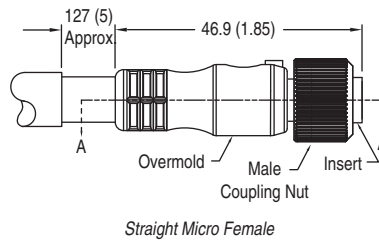
KwikLink Lite Drop Cordset

Specifications

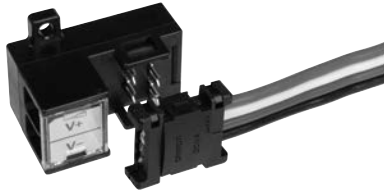
| Physical Characteristics | |
|----------------------------|--|
| Coupling Nut Material | Epoxy-coated zinc |
| Connector Material | Molded oil-resistant PUR |
| Contact Material | Gold-plated palladium nickel |
| Cable Type | Oil resistant grey PVC jacket, unshielded, 22 AWG power conductors, 24 AWG signal conductors |
| Cable Diameter [mm (in.)] | 6 (0.24) |
| Electrical | |
| Current Capacity | 4 A |
| Environmental | |
| Temperature Rating [C (F)] | -20...+80 ° (-4...+176 °) |

Approximate Dimensions

Dimensions are in millimeters (inches). Illustrations are not drawn to scale.



KwikLink™ Lite Flat Media Terminal Block IDC



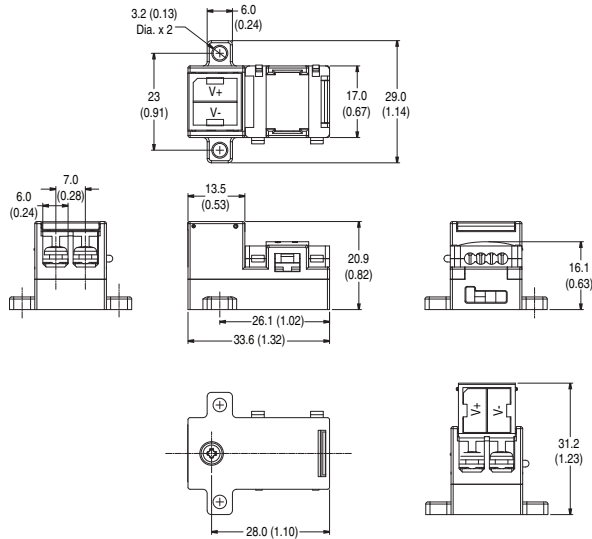
Power Input

Specifications

| Safety Ratings | |
|-------------------------------|---|
| Certifications | UL Recognized |
| Physical Characteristics | |
| Connector Style | Contact area: phosphor bronze/nickel under plated, gold plated; Terminal area: phosphor bronze/nickel under plated, gold flash plating |
| Contact Material | Phosphor bronze/nickel substrate |
| Electrical | |
| Current Capacity | 4 A |
| Voltage | 30V DC |
| Environmental | |
| Enclosure Type Rating | IP20 |
| Vibration | 1.52 mm (0.06 in.) displacement, 10...500 Hz |
| Operating Temperature [C (F)] | -35...+55 ° (-31...+131 °) |
| Storage Temperature [C (F)] | -35...+80 ° (-31...+176 °) |

Approximate Dimensions

Dimensions are in millimeters (inches). Illustrations are not drawn to scale.





Class 1 Flat Cable



Class 2 Flat Cable



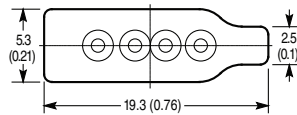
Auxiliary Power Flat Cable

Specifications

| | |
|-------------------------------|--|
| Certifications | UL Listed and CSA Certified |
| Cable Type | 4-conductor unshielded |
| Cable Rating | CL1: 4C16, UL TC 600V 75C wet sunlight resistant, cUL FT4 CL2: 4C16, UL CL2 75C, CSA AWM I/II A/B 80C 300V FT4 Auxiliary Power: 4C16, UL TC 600V 75C wet sunlight resistant, cUL Type CIC TPE FT4 |
| Operating Temperature [C (F)] | -25...+75 ° (-13...+167 °) |

Approximate Dimensions

Dimensions are in millimeters (inches). Illustrations are not drawn to scale.



KwikLink™ General Purpose Flat Media Connectors



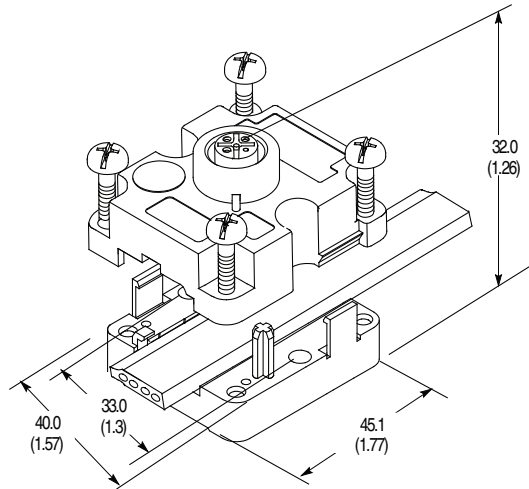
KwikLink General Purpose

Specifications

| | |
|----------------------------------|--|
| Storage Temperature [C (F)] | -40...+85 ° (-40...+185 °) |
| Installation Temperature [C (F)] | 0...50 ° (32...122 °) |
| Operating Temperature [C (F)] | -25...+75 ° (-13...+167 °) |
| Enclosure Type Rating | IP67 |
| Vibration | 0.35 mm (0.014 in.) displacement @ 10...150Hz, 3 planes |
| Connector Material | Cover: Glass-filled polyester, type PBT Base: Glass-filled nylon, type PA66 |
| Installation Torque | 1.1...1.3 N·m (10...12 in·lb) |
| Dimensions | 45 x 40 x 32 mm (1.8 x 1.6 x 1.3 in.) |

Approximate Dimensions

Dimensions are in millimeters (inches). Illustrations are not drawn to scale.





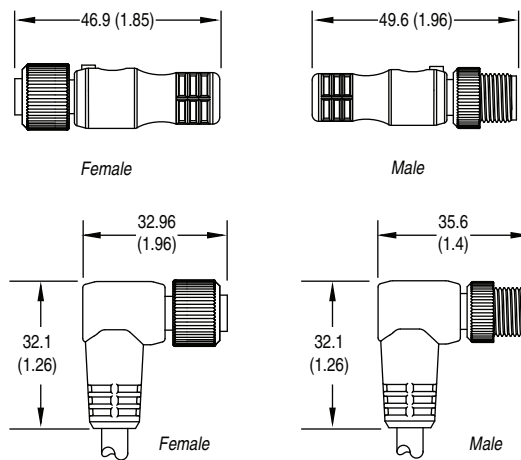
KwikLink Drop Cable

Specifications

| | |
|----------------------------|--|
| Coupling Nut Material | Epoxy-coated zinc |
| Connector Material | Molded oil-resistant PUR |
| Contact Material | Gold over nickel-plated brass |
| Cable Type | Oil-resistant grey PVC jacket, unshielded, 22 AWG power conductors, 24 AWG signal conductors |
| Cable O.D. | 6 mm (0.24 in.) |
| Temperature Rating [C (F)] | -20...+80 ° (-4...176 °) |
| Current, Max | 3 A |

Approximate Dimensions

Dimensions are in millimeters (inches). Illustrations are not drawn to scale.



KwikLink™ General Purpose Flat Media

Micro Auxiliary Power Cordsets & Patchcords



4-Pin DC Micro Patchcord

Specifications

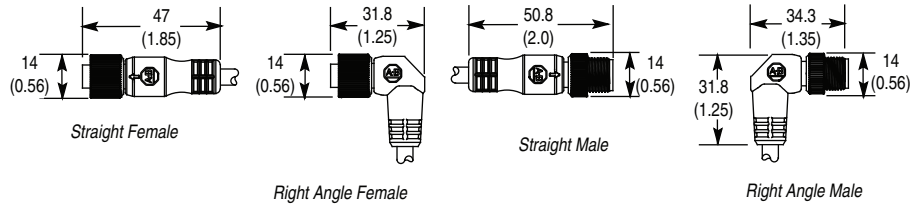
| | |
|----------------------------|---|
| Certifications | UL Recognized and CSA Certified |
| Mechanical | |
| Coupling Nut Material | Epoxy-coated zinc |
| Connector Material | Molded PUR |
| Contact Material | Gold over nickel-plated brass |
| Cable Type | Oil-resistant PVC jacket, PVC insulated conductors, 300V |
| Cable Diameter [mm (in.)] | 5 (0.21) |
| Bend Radius | 10 x diameter |
| Electrical | |
| Cable Rating | UL AWM style 2661 VW-1 105C 300V, CSA AWM A/B I/II 80C 300V FT1, UV oil and water resistant |
| Assembly Rating | 250V, 4 A |
| Environmental | |
| Enclosure Type Rating | IP67, NEMA 6P, 1200 psi (8270 kPa) washdown |
| Temperature Rating [C (F)] | -20...+105 ° (-4...+221 °) |

Wiring Diagrams

| Male | Female |
|------------------------|--------|
| 1 <---No connection--- | 1 |
| 2 <-----Brown-----> | 2 |
| 3 <-----Blue-----> | 3 |
| 4 <---No connection--- | 4 |
| 5 <---No connection--- | 5 |

Approximate Dimensions

Dimensions are in millimeters (inches). Illustrations are not drawn to scale.





Class 1 Flat Cable



Class 2 Flat Cable



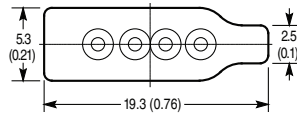
Auxiliary Power Flat Cable

Specifications

| | |
|-------------------------------|--|
| Certifications | UL Listed and CSA Certified |
| Cable Type | 4-conductor unshielded |
| Cable Rating | CL1: 4C16, UL TC 600V 75C wet sunlight resistant, cUL FT4 CL2: 4C16, UL CL2 75C, CSA AWM I/II A/B 80C 300V FT4 Auxiliary Power: 4C16, UL TC 600V 75C wet sunlight resistant, cUL Type CIC TPE FT4 |
| Operating Temperature [C (F)] | -25...+75 ° (-13...+167 °) |

Approximate Dimensions

Dimensions are in millimeters (inches). Illustrations are not drawn to scale.



KwikLink™ Heavy Duty Flat Media Trunk Splice Kit



Splice Kit

Specifications

| | |
|-------------------------------|--|
| Storage Temperature [C (F)] | -40...+85 ° (-40...+185 °) |
| Operating Temperature [C (F)] | -25...+75 ° (-13...+167 °) |
| Enclosure Type Rating | Unsealed: NEMA 1; IP60 (IEC 529) |
| Vibration | 1.5 mm displacement @ 10 500 Hz, 10 G peak, 3 planes |
| Material | Valox® |
| Jacket Material | Grey PVC |
| Dimensions | 45 x 49 x 59 mm (1.8 x 1.8 x 2.3 in.) |

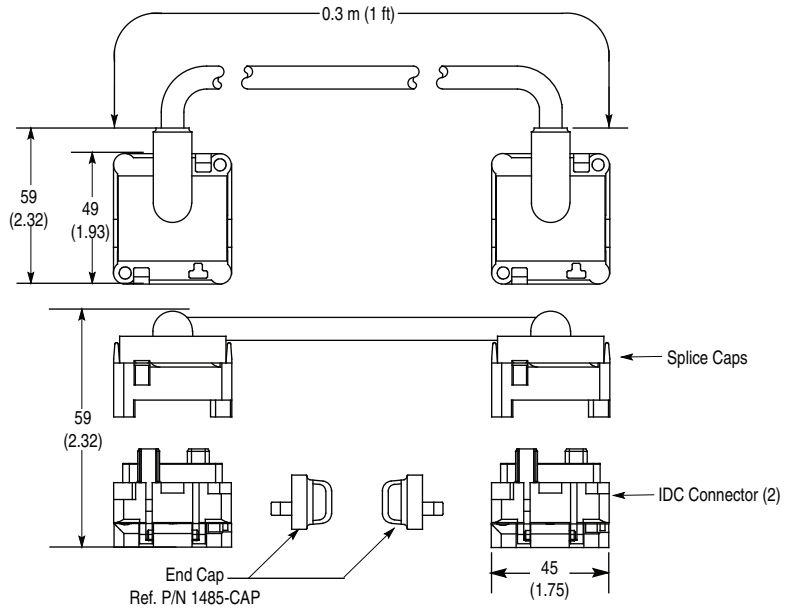
Wiring Diagrams

V+ (Red) V+
 Can-H (White) Can-H
 Can-L (Blue) Can-L
 V- (Black) V-

V+ (No Connection) V+
 Can-H (White) Can-H
 Can-L (Blue) Can-L
 V- (Black) V-

Approximate Dimensions

Dimensions are in millimeters (inches). Illustrations are not drawn to scale.



KwikLink™ Heavy Duty Flat Media Insulation Displacement Connectors



Micro Style IDC



Open Style IDC



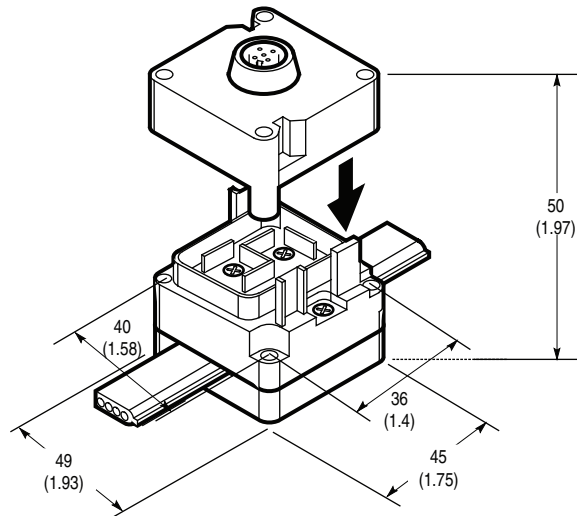
Terminator

Specifications

| | |
|-------------------------------|---|
| Storage Temperature [C (F)] | -40...+85 ° (-40...+185 °) |
| Operating Temperature [C (F)] | -25...+75 ° (-13...+167 °) |
| Enclosure Type Rating | Unsealed: NEMA 1; IP60 (IEC 529) Sealed: NEMA 6P, 13, IP67 and 1200 psi washdown |
| Vibration | 1.5 mm displacement @ 10...500 Hz, 10 G peak, 3 planes |
| Material | Valox® |
| Dimensions | 45 x 49 x 50 mm (1.8 x 1.8 x 2 in.) |

Approximate Dimensions

Dimensions are in millimeters (inches). Illustrations are not drawn to scale.



KwikLink™ Heavy Duty Flat Media

Pigtail Drop—Insulation Displacement Connectors



Mini Style Pigtail Drop IDC



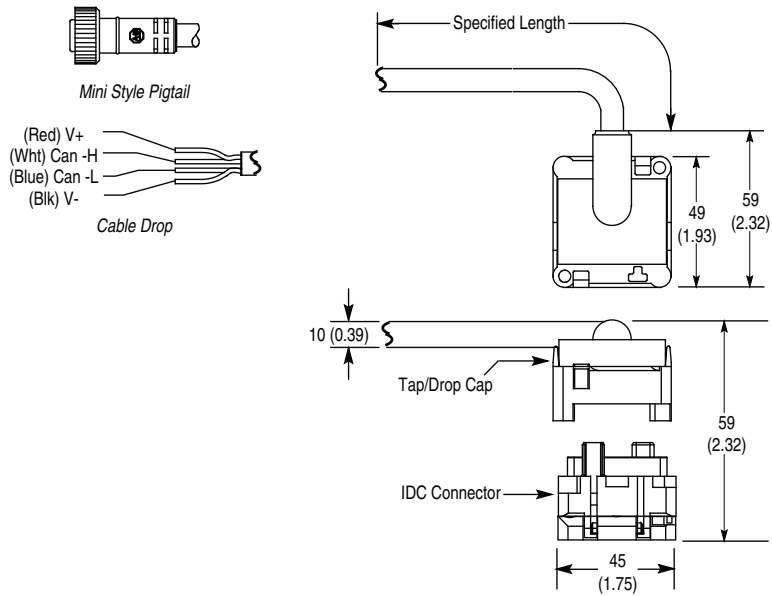
Cable Drop IDC

Specifications

| | |
|-------------------------------|--|
| Storage Temperature [C (F)] | -40...+85 ° (-40...+185 °) |
| Operating Temperature [C (F)] | -25...+75 ° (-13...+167 °) |
| Enclosure Type Rating | Sealed: NEMA 6P, 13; IP67 (IEC 529) and 1200 psi (8270 kPa) washdown Sealed: NEMA 6P, 13; IP67 (IEC 529) and 1200 psi (8270 kPa) washdown |
| Vibration | 1.5 mm displacement @ 10...500 Hz, 10 G peak, 3 planes |
| Material | Valox® |
| Dimensions | 45 x 49 x 59 mm (1.8 x 1.8 x 2.3 in.) |

Approximate Dimensions

Dimensions are in millimeters (inches). Illustrations are not drawn to scale.





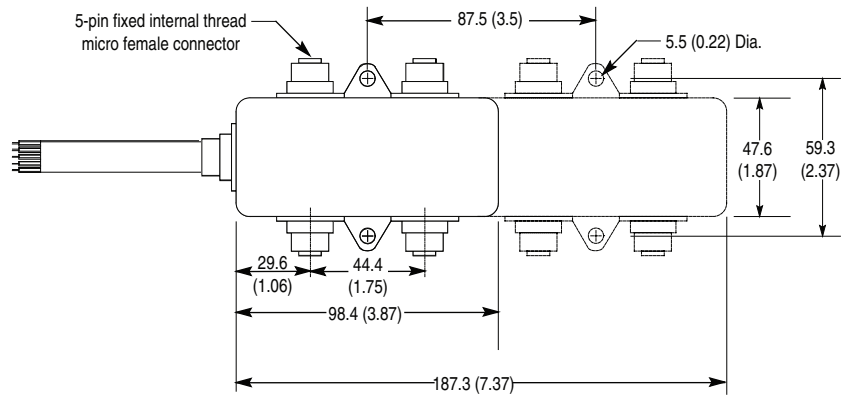
4- and 8-Port DevicePorts with Cable Drop

Specifications

| | |
|-------------------------------|--|
| Storage Temperature [C (F)] | -40...+85 ° (-40...+185 °) |
| Operating Temperature [C (F)] | -25...+70 ° (-13...+158 °) |
| Enclosure Type Rating | NEMA 4, 6P and 1200 psi (8270 kPa), 3.5 GPM, (60°C) 140°F temperature washdown; IP67 (IEC 529) |
| Vibration | 30...120 Hz |
| Shock | 5 g |
| Material | Chemical resistant black polymer |

Approximate Dimensions

Dimensions are in millimeters (inches). Illustrations are not drawn to scale.



KwikLink™ Heavy Duty Flat Media Drop Cable



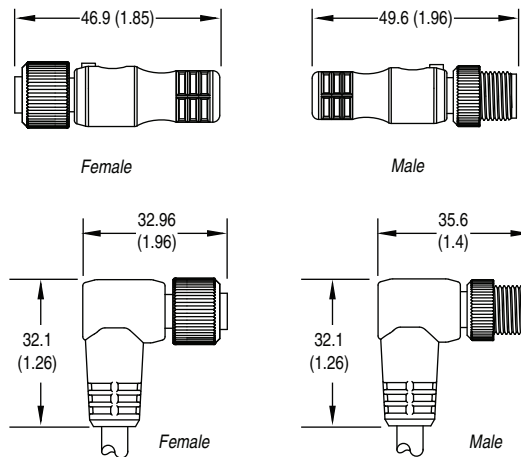
KwikLink Drop Cable

Specifications

| | |
|----------------------------|--|
| Coupling Nut Material | Epoxy-coated zinc |
| Connector Material | Molded oil-resistant PUR |
| Contact Material | Gold over nickel-plated brass |
| Cable Type | Oil-resistant grey PVC jacket, unshielded, 22 AWG power conductors, 24 AWG signal conductors |
| Cable O.D. | 6 mm (0.24 in.) |
| Temperature Rating [C (F)] | -20...+80 ° (-4...+176 °) |
| Current, Max | 3 A |

Approximate Dimensions

Dimensions are in millimeters (inches). Illustrations are not drawn to scale.





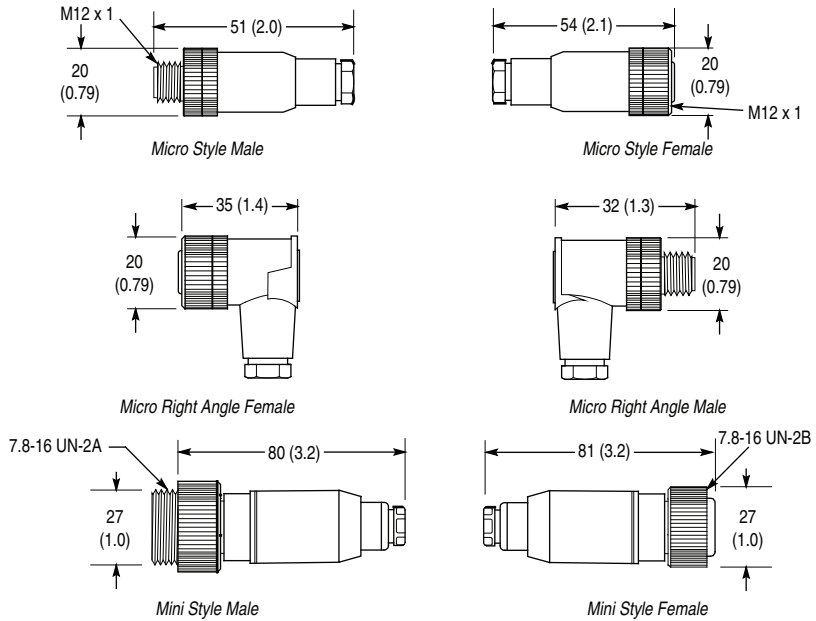
Straight Female Micro Style Terminal Chamber

Specifications

| | |
|-------------------------------|---|
| Coupling Nut Material | Micro: Nickel-plated brass; Mini: Anodized aluminum |
| Connector Shell Material | Nylon |
| Contact Material | Gold-plated palladium/nickel |
| Enclosure Type Rating | NEMA 6; IP67 (IEC 529) |
| Operating Temperature [C (F)] | -40...+90 ° (-40...+194 °) |

Approximate Dimensions

Dimensions are in millimeters (inches). Illustrations are not drawn to scale.



KwikLink™ Heavy Duty Flat Media

Micro Auxiliary Power Cordsets & Patchcords



4-Pin DC Micro Patchcord

Specifications

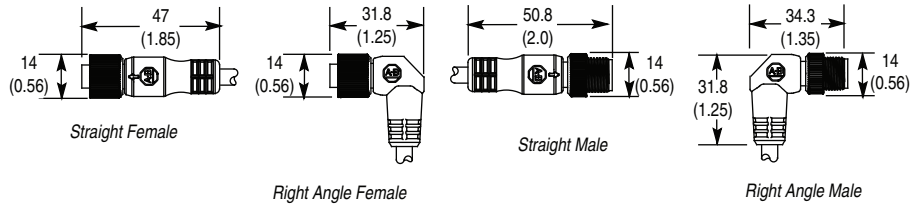
| | |
|----------------------------|---|
| Certifications | UL Recognized and CSA Certified |
| Mechanical | |
| Coupling Nut Material | Epoxy-coated zinc |
| Connector Material | Molded PUR |
| Contact Material | Gold over nickel-plated brass |
| Cable Type | Oil-resistant PVC jacket, PVC insulated conductors, 300V |
| Cable Diameter [mm (in.)] | 5 (0.21) |
| Bend Radius | 10 x diameter |
| Electrical | |
| Cable Rating | UL AWM style 2661 VW-1 105C 300V, CSA AWM A/B I/II 80C 300V FT1, UV oil and water resistant |
| Assembly Rating | 250V, 4 A |
| Environmental | |
| Enclosure Type Rating | IP67, NEMA 6P, 1200 psi (8270 kPa) washdown |
| Temperature Rating [C (F)] | -20...+105 ° (-4...+221 °) |

Wiring Diagrams

| Male | Female |
|-----------------------|--------|
| 1 <--No connection--< | 1 |
| 2 <-----Brown-----< | 2 |
| 3 <-----Blue-----< | 3 |
| 4 <--No connection--< | 4 |
| 5 <--No connection--< | 5 |

Approximate Dimensions

Dimensions are in millimeters (inches). Illustrations are not drawn to scale.



KwikLink™ Heavy Duty Flat Media Auxiliary Power Insulation Displacement Connectors



Specifications

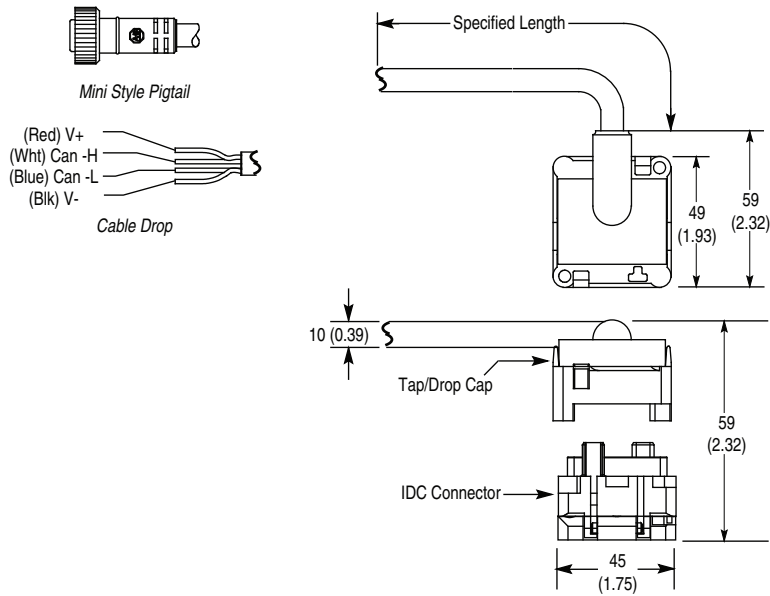
| | |
|---------------------------|---|
| Cable Temperature [C (F)] | -25...+75 ° (-13...+167 °) |
| Enclosure Type Rating | NEMA 6P, 13; IP67 (IEC 529) and 1200 psi (8270 kPa) washdown |
| Vibration | 1.5 mm displacement @ 10...500 Hz, 10 G peak, 3 planes |
| Material | Valox® |
| Cable Type | Oil resistant yellow PVC jacket, 16 AWG stranded copper, 600V, UL Recognized and CSA Certified, ST00W-A |
| Dimensions | 45 x 49 x 59 mm (1.8 x 1.8 x 2.3 in.) |

Wiring

| Device End | Flat Cable |
|---------------|------------|
| Black (pin 1) | Black |
| White (pin 2) | Blue |
| Red (pin 3) | Red |
| Green (pin 4) | White |

Approximate Dimensions

Dimensions are in millimeters (inches). Illustrations are not drawn to scale.



Cordsets & Patchcords, Round Media Cable Spools

Thick Trunk Cable



Thick Trunk Cable



Mini to Mini Thick Patchcord

Specifications

| | |
|---------------------------|--|
| Certifications | UL Recognized and CSA Certified |
| Mechanical | |
| Coupling Nut Material | Epoxy-coated zinc |
| Jacket Material | Grey PVC |
| No. of Conductors | 1 pair 15 AWG, 1 pair 18 AWG, and drain |
| Contact Material | Gold-plated machined brass |
| Cable Diameter [mm (in.)] | Thick: 12.2 (0.48); ODVA Type V: 13.5 (0.53) |
| Bend Radius | 10 x diameter |
| Electrical | |
| Cable Rating | Thick: UL-Type PLTC 300V or CM 75 °C (167 °F) or AWM style 2464, CSA-AWM I/II A/B 80 °C (176 °F) 300V FT1, Class 2 Type Thick Flex Rated: UL-Type PLTC 75C or AWM 80C 600V, CSA AWM I/II A/B 80C 600V, FT4 Oil Res II ODVA Type V, Open-Wiring Compliant: UL 600V TC-ER 75C Sunlight Resistant, c(UL) AWM I/II A/B 75C 600V FT1 ODVA Type V Cable: Type V Trunk Cable, UL 600V Type TC-ER Sunlight Resistant 75 °C Dry Open Wiring, CSA AWM I/II A/B 75 °C 600V FT1, Oil Resistant, Class 1 Type |
| Assembly Rating | Thick: 300V, 8 A (4A NEC) |
| Environmental | |
| Enclosure Type Rating | NEMA 1, 2, 3, 4, 6P, 12, 13; IP67; 1200 psi (8720 kPa) washdown |
| Cable Temperature [C (F)] | -20...+70 ° (-15...+158 °) |

Approximate Dimensions

Dimensions are in millimeters (inches). Illustrations are not drawn to scale.

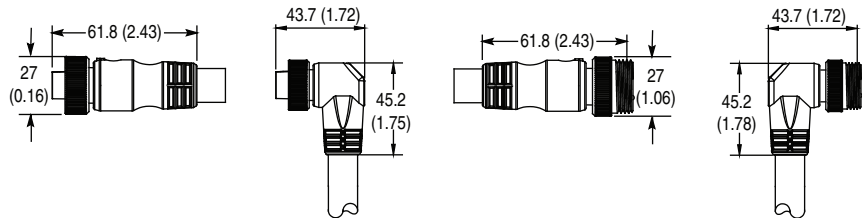
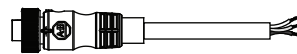


Figure A
Straight Female

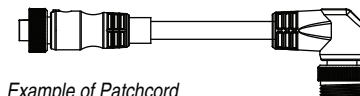
Figure B
Right Angle Female

Figure C
Straight Male

Figure D
Right Angle Male



Example of Cordset



Example of Patchcord

Pinout and Color Code

| Face View Pinout | |
|-------------------|--|
| | |
| Mini Connector | |
| Female | Male |
| Color Code | 1 Drain 2 Red (V+) 3 Black (V-) 4 White (CAN_H) 5 Blue (CAN_L) |

Cordsets & Patchcords, Round Media Cable Spools

Thin Trunk Cable



Thin Cable



Mini to Mini Thin Cordset

Specifications

| | |
|---------------------------|--|
| Certifications | UL Recognized and CSA Certified |
| Mechanical | |
| Coupling Nut Material | Epoxy-coated zinc |
| Jacket Material | Yellow CPE (chemical resistant) or grey PVC |
| No. of Conductors | 1 pair 22 AWG, 1 pair 24 AWG and drain |
| Contact Material | Mini: Gold-plated machined brass; Micro: Gold over nickel-plated brass |
| Cable Diameter [mm (in.)] | 6.9 (0.27) |
| Bend Radius | 10 x diameter |
| Current, Max | 4 A |
| Electrical | |
| Cable Rating | Grey PVC: UL CL2 or CMG 75 °C (167 °F) or AWM 600V or c(UL) CMG or AWM I/II 80 °C (176 °F) 300V FT4; Grey High-Flex PVC: UL CL2 75 °C (167 °F) or AWM 20201 80 °C (176 °F) 600V or CSA AWM I/II 80 °C (176 °F) 600V FT4; Yellow CPE: UL- CL2 or CM 75 °C (167 °F) or AWM 20869 80 °C (176 °F), CSA- AWM I/II A/B 80 °C (176 °F) 300V FT4 Oil Res II |
| Assembly Rating | 250V, 4 A |
| Environmental | |
| Enclosure Type Rating | NEMA 1, 2, 3, 4, 6P, 12, 13; IP67; 1200 psi (8720 kPa) washdown |
| Cable Temperature [C (F)] | -20...+70 ° (-15...+158 °) |

Approximate Dimensions

Dimensions are in millimeters (inches). Illustrations are not drawn to scale.

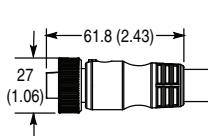


Figure A
Straight Female

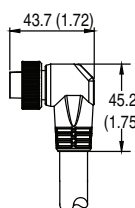


Figure B
Right Angle Female

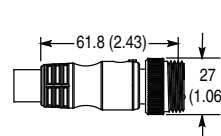


Figure C
Straight Male

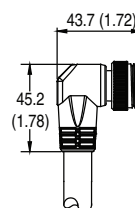


Figure D
Right Angle Male

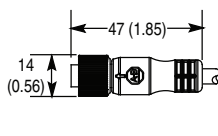


Figure E
Straight Female

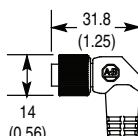


Figure F
Right Angle Female

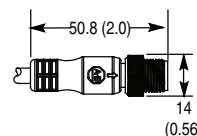


Figure G
Straight Male

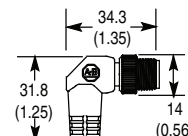


Figure H
Right Angle Male

Pinout and Color Code

| | | Face View Pinout | | | |
|-------------------|--|---------------------------------------|-------------|-----------------------------------|-------------|
| | | | | | |
| | | Mini Connector | | Micro Connector | |
| | | Female | Male | Female | Male |
| Color Code | | 1 Drain 2 Red (V+) 3 Black (V-) | | 4 White (CAN_H) 5 Blue (CAN_L) | |

Receptacles, Round Media

Thick and Thin Cable



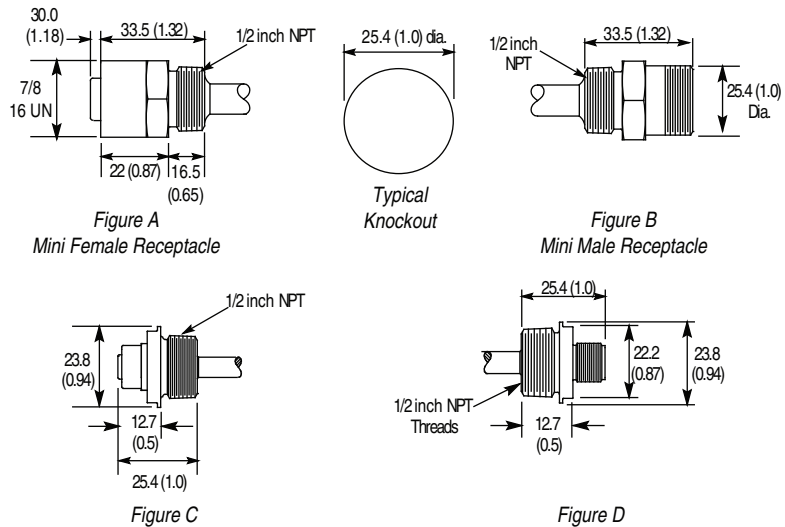
Mini Female Thin Receptacle

Specifications

| | |
|-------------------------------|--|
| Certifications | UL Recognized and CSA Certified |
| Mechanical | |
| Material | Thick: Grey PVC; Thin: Grey PVC or Yellow CPE |
| Jacket Material | Thick: Grey PVC; Thin: Grey PVC or Yellow CPE |
| No. of Conductors | Thick: 1 pair 15 AWG, 1 pair 18 AWG, and drain; Thin: 1 pair 22 AWG, 1 pair 24 AWG, and drain |
| Contact Material | Mini: Gold-plated machined brass; Micro: Gold over nickel-plated brass |
| Cable Diameter [mm (in.)] | Thick: 11.2 (0.44); Thin: 6.9 (0.27) |
| Bend Radius | 10 x diameter |
| Current, Max | Thick: 8 A (4A NEC); Thin: 3 A |
| Electrical | |
| Cable Rating | Thick: UL-Type PLTC 300V or CM 75 °C (167 °F) or AWM style 2464, CSA-AWM I/II A/B 80 °C (176 °F) 300V FT1; Thin, Grey PVC: UL- CM 75 °C (167 °F) or AWM 2464, CSA- SWM II A/B 80 °C (176 °F) 300V FT4; Thin, Yellow CPE: UL- CL2 or CM 75 °C (167 °F) or AWM 20869 80 °C (176 °F), CSA- AWM I/II A/B 80 °C (176 °F) 30 |
| Assembly Rating | Thick: 300V, 9 A (4 A NEC); Thin: (250V, 4 A |
| Environmental | |
| Enclosure Type Rating | NEMA 1, 2, 3, 4, 6P, 12, 13; IP67, 1200 psi (8720 kPa) washdown |
| Operating Temperature [C (F)] | -40...+80 ° (-40...+176 °) |

Approximate Dimensions

Dimensions are in millimeters (inches). Illustrations are not drawn to scale.



Pinout and Color Code

| Face View Pinout | | | |
|------------------|------|-----------------|------|
| | | | |
| Mini Connector | | Micro Connector | |
| Female | Male | Female | Male |
| | | 1 Drain | |
| | | 2 Red (V+) | |
| | | 3 Black (V-) | |
| | | 4 White (CAN_H) | |
| | | 5 Blue (CAN_L) | |



Straight Female Micro Style



Female Mini Style

Specifications

| Mechanical | |
|-------------------------------|---|
| Coupling Nut Material | Micro: nickel-plated brass; Mini: anodized aluminum |
| Connector Shell Material | Nylon |
| Contact Material | Mini: Gold-plated brass; Micro: Gold over nickel-plated brass |
| Shock | 5 g |
| Vibration | 30...120 Hz |
| Electrical | |
| Assembly Rating | Mini: 250V, 9 A; Micro: 125V, 4 A |
| Environmental | |
| Enclosure Type Rating | NEMA 6; IP67 (IEC 529) |
| Operating Temperature [C (F)] | -25...+70 ° (-13...+158 °) |

Approximate Dimensions

Dimensions are in millimeters (inches). Illustrations are not drawn to scale.

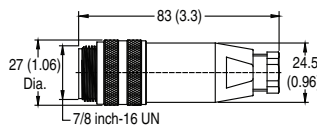


Figure A
Mini Style Female

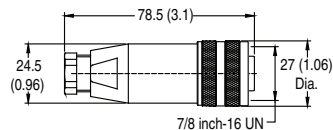


Figure B
Mini Style Male

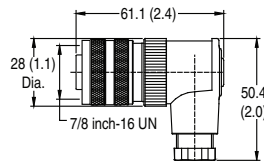


Figure C
Micro Style Female

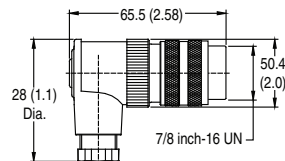


Figure D
Micro Style Male

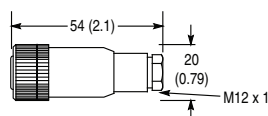


Figure E
Micro Style Female

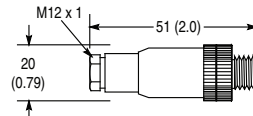


Figure F
Micro Style Male

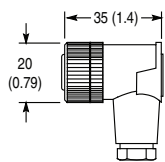


Figure G
Micro Right Angle Female

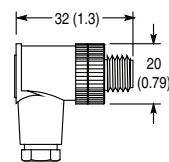


Figure H
Micro Right Angle Male

Pinout and Color Code

| | | Face View Pinout | | | |
|------------|--|------------------|-----------------------|---|------|
| | | | | | |
| | | Mini Connector | | Micro Connector | |
| | | Female | Male | Female | Male |
| Color Code | | | 1 Drain 2 Red (V+) | 4 White (CAN_H) 5 Blue (CAN_L) 3 Black (V-) | |

Bulkhead Pass-thru, Round Media



Mini Bulkhead Pass-thru



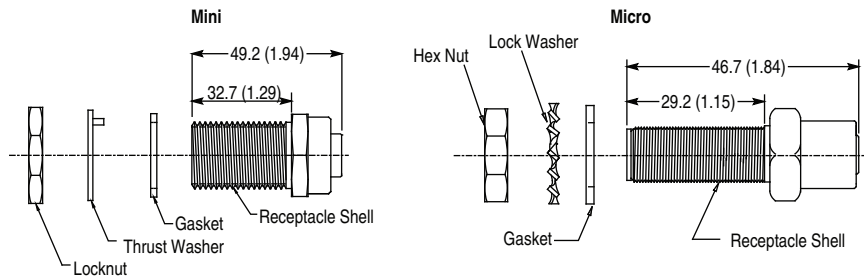
Micro Bulkhead Pass-thru

Specifications

| | Mini | Micro |
|-------------------------------|------------------------------|---------------------------|
| Mechanical | | |
| Material | Nickel-plated brass | |
| Connector Insert Material | PVC | Nylon |
| Gasket Material | Neoprene | |
| Thrust Washer | Nylon | Steel alloy |
| Contact Material | Gold-plated palladium nickel | |
| Electrical | | |
| Assembly Rating | 600V, 8 A | 250V, 4 A |
| Environmental | | |
| Enclosure Type Rating | IP67 | |
| Operating Temperature [C (F)] | -20...+105 ° (-4...+221 °) | -20...+80 ° (-4...+176 °) |

Approximate Dimensions

Dimensions are in millimeters (inches). Illustrations are not drawn to scale.





Mini Style Terminator



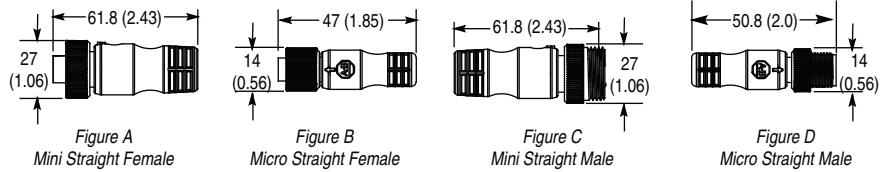
Micro Style Terminator

Specifications

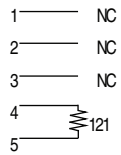
| Mechanical | |
|-------------------------------|---|
| Coupling Nut Material | Epoxy-coated zinc |
| Contact Material | Mini: Gold-plated brass; Micro: Gold over nickel-plated brass |
| Electrical | |
| Assembly Rating | Mini: 250V, 8 A; Micro: 250V, 4 A |
| Environmental | |
| Enclosure Type Rating | NEMA 1, 2, 3, 4, 6P; 12, 13, IP67, 1200 psi (8720 kPa) washdown |
| Operating Temperature [C (F)] | -25...+70 ° (-13...+158 °) |

Approximate Dimensions

Dimensions are in millimeters (inches). Illustrations are not drawn to scale.



Wiring Diagrams



T-port, Round Media

Mini



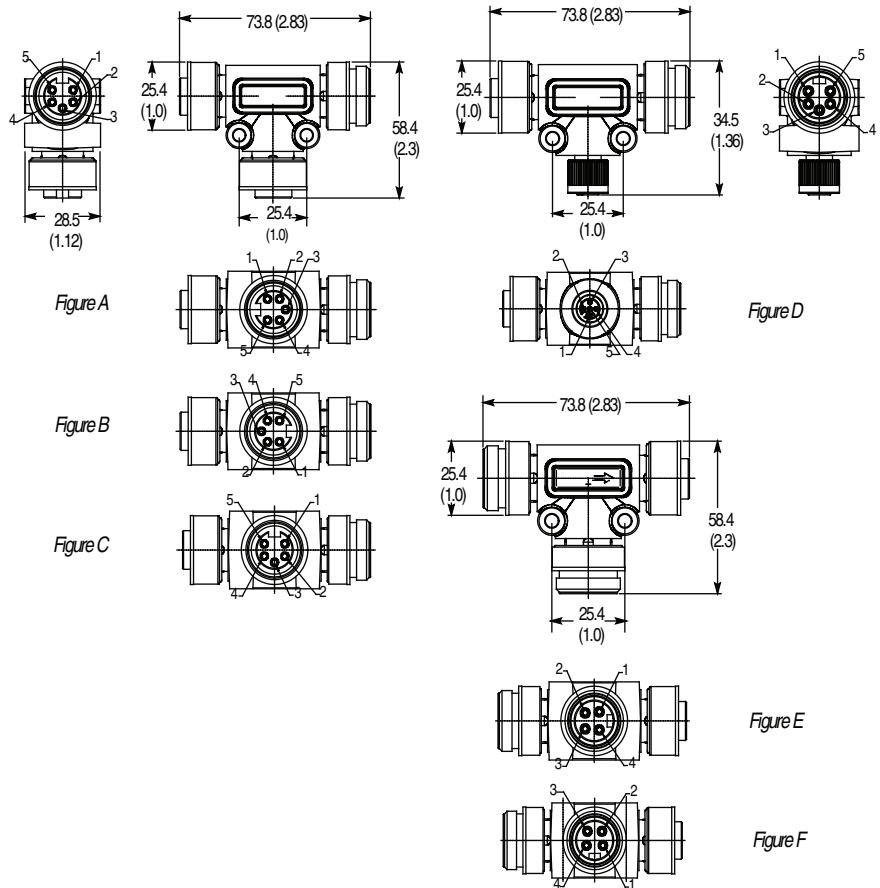
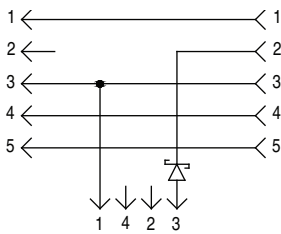
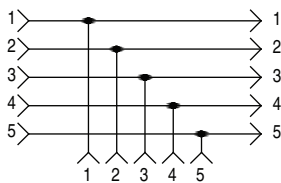
Mini Style T-Port

Specifications

| Mechanical | |
|-------------------------------|--|
| Coupling Nut Material | Epoxy-coated zinc |
| Material | TPE |
| Contact Material | Mini: Gold-plated brass; Micro: Gold-plated palladium nickel |
| Electrical | |
| Assembly Rating | Mini to Mini: 50V, 8 A; Mini to Micro: 50V, 4 A |
| Environmental | |
| Enclosure Type Rating | NEMA 6P, 12 and 13; IP67, 1200 psi (8270 kPa) washdown |
| Operating Temperature [C (F)] | -25...+70 ° (-13...+158 °) |

Approximate Dimensions

Dimensions are in millimeters (inches). Illustrations are not drawn to scale.



Pinout and Color Code

| Face View Pinout | | | |
|-----------------------|--|------------------------|-----------------------|
| | | | |
| Mini Connector | Mini Connector | Micro Connector | Mini Connector |
| Female | Male | Female | Male |
| Color Code | 1 Drain 4 White (CAN_H) 2 Red (V+) 5 Blue (CAN_L) 3 Black (V-) | | |



Micro Style T-Port

Specifications

| Mechanical | |
|-------------------------------|---|
| Coupling Nut Material | Epoxy-coated zinc |
| Material | PUR |
| Contact Material | Gold over nickel-plated brass |
| Electrical | |
| Assembly Rating | 250V, 4 A |
| Environmental | |
| Enclosure Type Rating | NEMA 6P, 12 and 13, IP 67 (IEC 529), 1200 psi (8270 kPa) washdown |
| Operating Temperature [C (F)] | -20...+70 ° (-4...+158 °) |

Approximate Dimensions

Dimensions are in millimeters (inches). Illustrations are not drawn to scale.

Wiring Diagrams

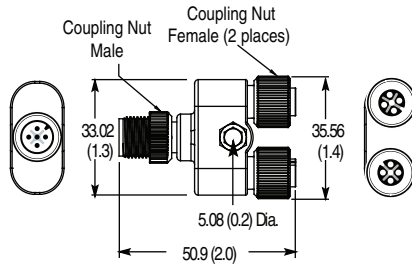
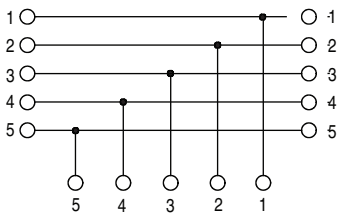


Figure A

Pinout and Color Code

| Face View Pinout | |
|------------------|-----------------|
| | |
| Micro Connector | |
| Female | Male |
| 1 Drain | 4 White (CAN_H) |
| 2 Red (V+) | 5 Blue (CAN_L) |
| | 3 Black (V-) |

Color Code

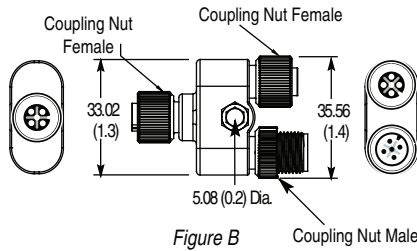


Figure B

Gender and Configurator Changers, Round Media



Male to Male Gender Changer



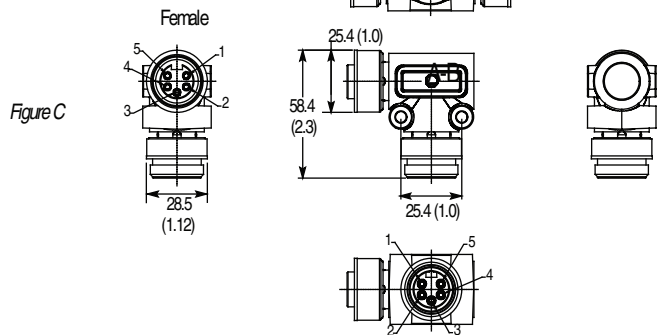
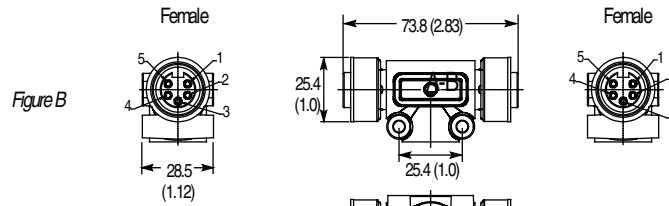
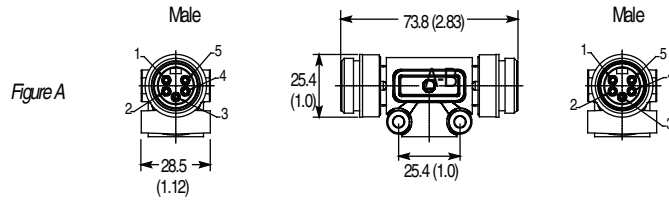
Right Angle Adaptor

Specifications

| Mechanical | |
|-------------------------------|--|
| Coupling Nut Material | Epoxy-coated zinc |
| Material | TPE |
| Contact Material | Gold-plated palladium nickel |
| Electrical | |
| Assembly Rating | 50V, 8 A |
| Environmental | |
| Enclosure Type Rating | NEMA 6P, 12 and 13, IP67, 1200 psi (8270 kPa) washdown |
| Operating Temperature [C (F)] | -20...+70 ° (-4...+158 °) |

Approximate Dimensions

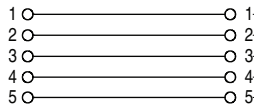
Dimensions are in millimeters (inches). Illustrations are not drawn to scale.



Pinout and Color Code

| Face View Pinout | |
|---------------------------------------|-----------------------------------|
| | |
| Mini Connector | |
| Female | Male |
| 1 Drain 2 Red (V+) 3 Black (V-) | 4 White (CAN_H) 5 Blue (CAN_L) |

Wiring Diagrams





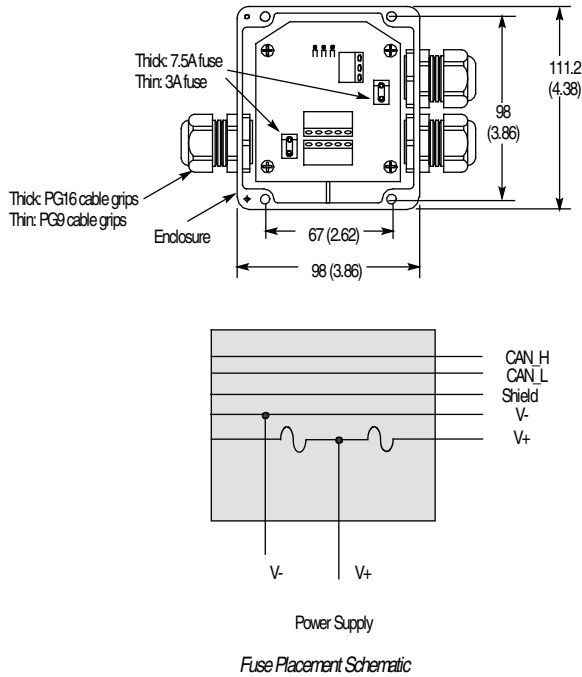
PowerTap, Thick Cable

Specifications

| | |
|-------------------------------|--|
| Certifications | UL Recognized and CSA Certified |
| Mechanical | |
| Material | Black polymer |
| Relative Humidity | 5...95% (noncondensing) |
| Current, Max | Thick: 15.0 A max. total current; (7.5 A max. per trunk) Thin: 6 A max. total current; (3 A max. per trunk) |
| Electrical | |
| Assembly Rating | Thick: 24V, 8 A; Thin: 25V, 3 A |
| Environmental | |
| Enclosure Type Rating | NEMA 3, 4X, 12 and 13; 1200 psi (8270 kPa) at 60°C (140°F); temperature washdown |
| Storage Temperature [C (F)] | -40...+85 ° (-40...+185 °) |
| Operating Temperature [C (F)] | -25...+70 ° (-13...+158 °) |

Approximate Dimensions

Dimensions are in millimeters (inches). Illustrations are not drawn to scale.



DeviceBox™, Round Media

2-, 4-, 8-Port



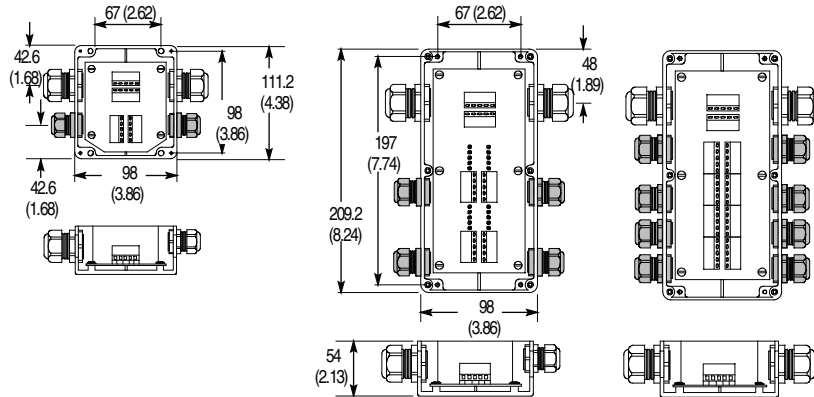
4-port DeviceBox, Thick Cable

Specifications

| | |
|-------------------------------|--|
| Certifications | UL Recognized and CSA Certified |
| Mechanical | |
| Material | Black polymer |
| Relative Humidity | 5...95% (noncondensing) |
| Current, Max | Thick: 8 A max. total current; (7.5 A max. per trunk) Thin: |
| Electrical | |
| Assembly Rating | 24V, 8 A |
| Environmental | |
| Enclosure Type Rating | NEMA 3, 4X, 12 and 13; 1200 psi (8270 kPa) washdown |
| Storage Temperature [C (F)] | -40...+85 ° (-40...+185 °) |
| Operating Temperature [C (F)] | -25...+70 ° (-13...+158 °) |

Approximate Dimensions

Dimensions are in millimeters (inches). Illustrations are not drawn to scale.



Note: Trunk connection in diagrams above show thick cable gland.



6-Port Thru-Trunk DevicePort with Micro Connectors

Specifications

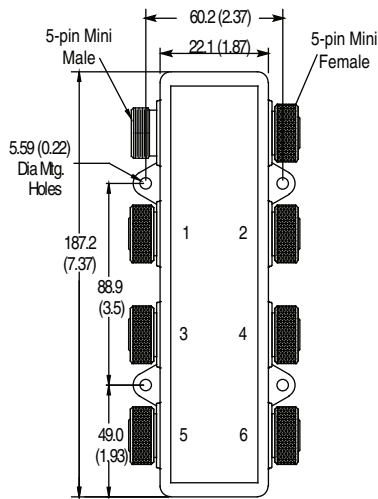
| | |
|-------------------------------|---|
| Certifications | UL Recognized and CSA Certified |
| Mechanical | |
| Material | Chemical resistant black polymer |
| Connector Shell Material | Anodized aluminum with clear sealant |
| Contact Material | Mini: Gold-plated brass; Micro: Gold over nickel-plated brass |
| Shock | 5 g |
| Vibration | 30...120 Hz |
| Electrical | |
| Assembly Rating | 24V, 3 A |
| Environmental | |
| Enclosure Type Rating | IP67, NEMA 4, 6P; 1200 psi (8270 kPa) washdown |
| Operating Temperature [C (F)] | -13...+158 ° (-25...+70 °) |

Pinout and Color Code

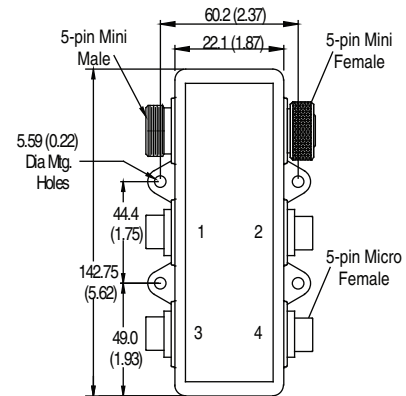
| Face View Pinout | | |
|-----------------------|-----------------|------------------------|
| | | |
| Mini Connector | | Micro Connector |
| Female | Male | Female |
| 1 Drain | 4 White (CAN_H) | |
| 2 Red (V+) | 5 Blue (CAN_L) | |
| | 3 Black (V-) | |
| Color Code | | |

Approximate Dimensions

Dimensions are in millimeters (inches). Illustrations are not drawn to scale.



6-port mini thru-trunk DevicePort



4-port micro thru-trunk DevicePort

DevicePort™, Round Media Drop-Connected



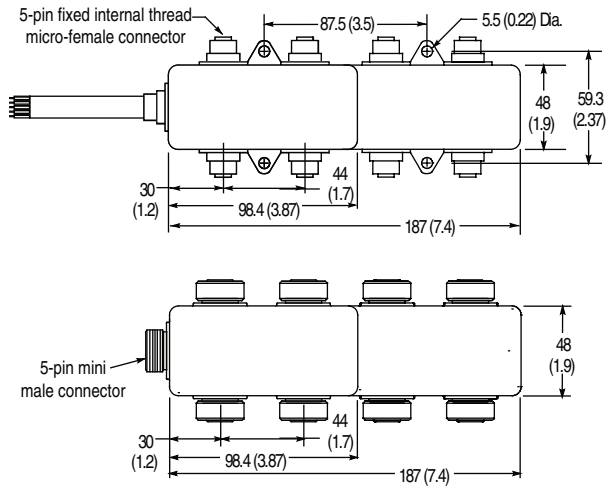
8-Port DevicePort with Cable Drop and Micro Connectors

Specifications

| | |
|-------------------------------|---|
| Certifications | UL Recognized and CSA Certified |
| Mechanical | |
| Material | Chemical resistant black polymer |
| Connector Shell Material | Anodized aluminum with clear sealant |
| Contact Material | Mini: Gold-plated brass; Micro: Gold over nickel-plated brass |
| Shock | 5 g |
| Vibration | 30...120 Hz |
| Electrical | |
| Assembly Rating | 24V, 3 A |
| Environmental | |
| Enclosure Type Rating | IP67, NEMA 4, 6P; 1200 psi (8270 kPa) washdown |
| Operating Temperature [C (F)] | -13...+158 ° (-25...+70 °) |

Approximate Dimensions

Dimensions are in millimeters (inches). Illustrations are not drawn to scale.



Pinout and Color Code

| Face View Pinout | | | |
|------------------|------|-----------------|------|
| | | | |
| Mini Connector | | Micro Connector | |
| Female | Male | Female | Male |
| | | 1 Drain | |
| | | 2 Red (V+) | |
| | | 3 Black (V-) | |
| | | 4 White (CAN_H) | |
| | | 5 Blue (CAN_L) | |

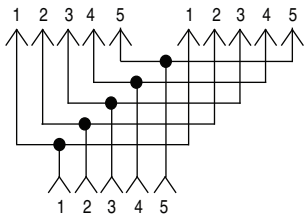


Open-Style Y-Adaptor

Specifications

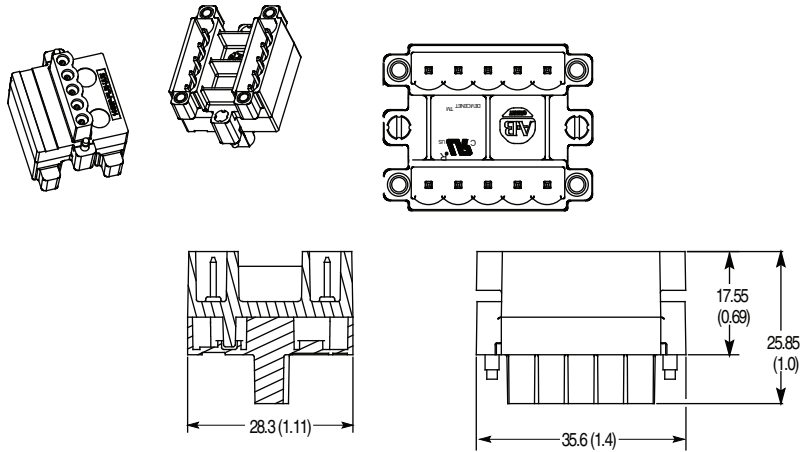
| | |
|-------------------------------|---------------------------------|
| Certifications | UL Recognized for US and Canada |
| Mechanical | |
| Material | Nylon |
| Screw Material | Nickel-plated brass |
| Contact Material | Phosphor-bronze |
| Electrical | |
| Cable Rating | — |
| Assembly Rating | 24V, 8 A |
| Environmental | |
| Enclosure Type Rating | IP20 |
| Operating Temperature [C (F)] | -25...+75° (-13...+167°) |

Wiring Diagrams



Approximate Dimensions

Dimensions are in millimeters (inches). Illustrations are not drawn to scale.



Cordsets, Round Media

Open-Style

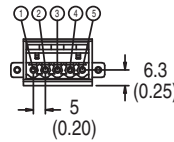


Specifications

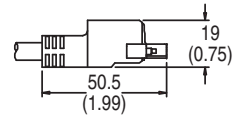
| Safety Ratings | |
|-------------------------------|--|
| Certifications | UL Recognized and CSA Certified |
| Physical Characteristics | |
| Housing Material | Nickel-plated brass |
| Jacket Material | Thin Grey PVC |
| Conductor Size, Max. | 2 PR 22 AWG, 2 PR 24 AWG |
| Contact Material | Gold over nickel-plated brass |
| Cable Diameter | 6.9 (0.27) |
| Home Run Connection | 10 x diameter |
| Current, Max | 4 A |
| Electrical | |
| Cable Rating | UL-CM 75 °C (167 °F) or AWM 2464, CSA-SWM II A/B 80 °C (176 °F) 300V FT4 |
| Assembly Rating | 250V, 4 A |
| Environmental | |
| Enclosure Type Rating | IP67, 1200 psi (8720 kPa) washdown |
| Operating Temperature [C (F)] | -20...+70 ° (-15...+158 °) |

Approximate Dimensions

Dimensions are in millimeters (inches). Illustrations are not drawn to scale.



Drawing 1



Drawing 2

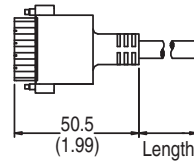


Figure A

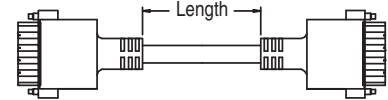


Figure B

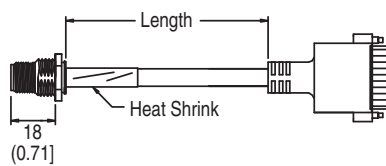


Figure C

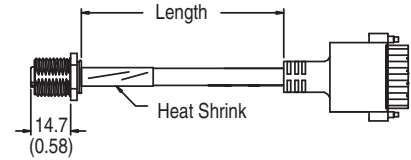
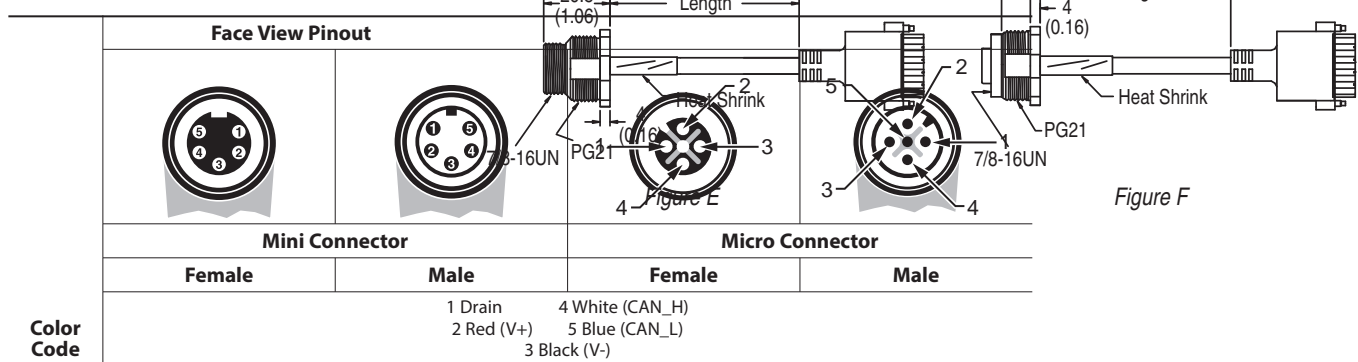


Figure D

Pinout and Color Code

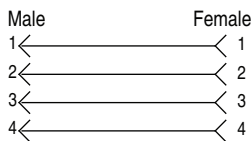




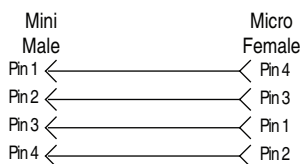
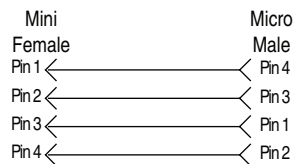
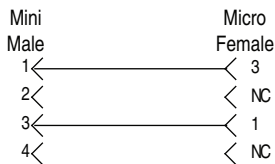
Mini to Mini Auxiliary Power Patchcord

Wiring Diagrams

Mini to Mini and Micro to Micro Patchcords



Mini to Micro Patchcords

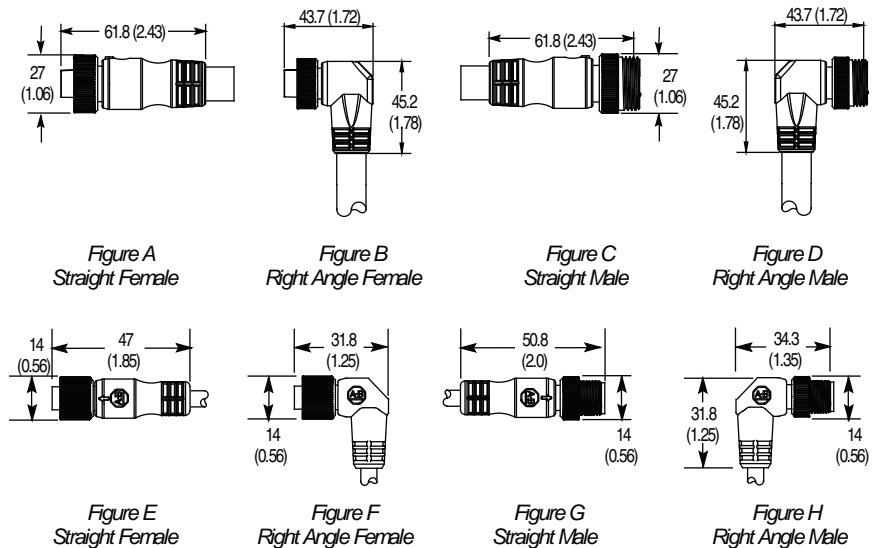


Specifications

| | |
|----------------------------|---|
| Certifications | UL Recognized and CSA Certified |
| Mechanical | |
| Coupling Nut Material | Epoxy-coated zinc |
| Connector Material | Molded oil-resistant PUR (Micro), TPE (Mini) |
| Contact Material | Gold over nickel-plated brass |
| Cable Type | Oil-resistant yellow PVC jacket, UL Recognized and CSA Certified, 16 AWG cable: 600V, 18 AWG and 22 AWG cable: 300V |
| Bend Radius | 10 x diameter |
| Cable Diameter [mm (in.)] | 16 AWG: 11 (0.42), 18 AWG: 7.4 (0.29), 22 AWG: 5 (0.21) |
| Electrical | |
| Cable Rating | 16 AWG: UL STOOW VW-1 105C 600V, CSA ST 105C 600V FT2, UV oil and water resistant; 18 AWG, 22 AWG: UL AWM style 2661 VW-1 105C 300V, CSA AWM A/B I/II 80C 300V FT1, UV oil and water resistant |
| Assembly Rating | Mini 16 AWG: 600V 10 A; Mini or micro 18 AWG or 22 AWG: 250V, 4 A |
| Environmental | |
| Enclosure Type Rating | IP67; NEMA 6P 1200 psi (8720 kPa) washdown |
| Temperature Rating [C (F)] | -20...+105 ° (-4...+221 °) |

Approximate Dimensions

Dimensions are in millimeters (inches). Illustrations are not drawn to scale.



Pinout and Color Code

| Color Code | Face View Pinout | | | |
|--------------|--------------------|--------------------|------------------------------|-----------------------|
| | Mini Connector | | Micro Connector | |
| | Female | Male | Female | Male |
| 16 AWG Cable | 1 Black 2 White | 3 Red 4 Green | — | |
| 18 AWG Cable | 1 Black 2 Blue | 3 Brown 4 White | 1 Brown 2 White 3 Blue | 4 Black 5 Not used |

Note: Pinout diagram for end device connector may differ, see page 6-55.

Cordsets & Patchcords, Auxiliary Power

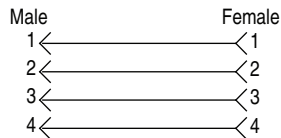
Flex-rated



Mini to Mini Auxiliary Power Patchcord

Wiring Diagrams

Mini to Mini and Micro to Micro Patchcord

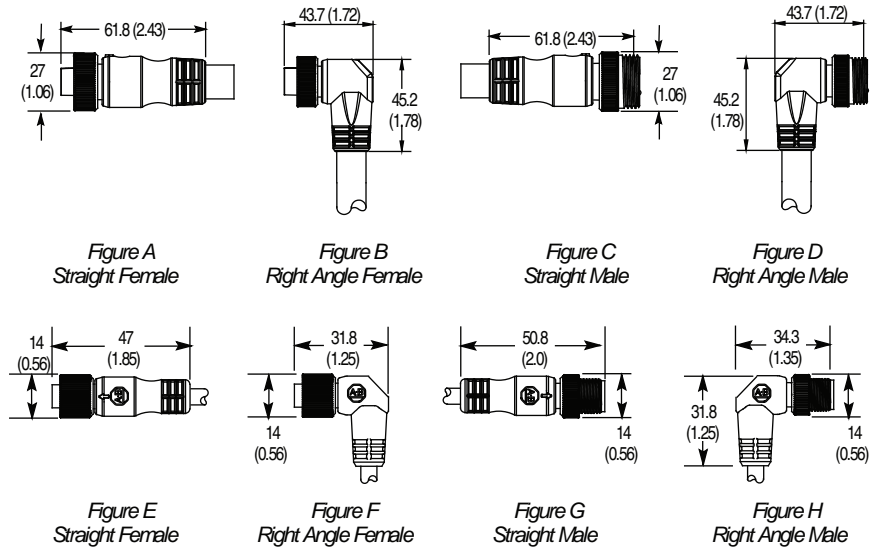


Specifications

| | |
|----------------------------|---|
| Certifications | UL Recognized and CSA Certified |
| Mechanical | |
| Coupling Nut Material | Epoxy-coated zinc |
| Connector Material | Molded oil-resistant PUR (Micro), TPE (Mini) |
| Contact Material | Gold over nickel-plated brass |
| Cable Type | Oil-resistant yellow PVC jacket, UL Recognized and CSA Certified, 16 AWG cable: 600V, 18 AWG and 22 AWG cable: 300V |
| Bend Radius | 10 x diameter |
| Cable Diameter [mm (in.)] | 16 AWG: 11 (0.42), 18 AWG: 7.4 (0.29), 22 AWG: 5 (0.21) |
| Electrical | |
| Cable Rating | 16 AWG: UL STOOW VW-1 105C 600V, CSA ST 105C 600V FT2, UV oil and water resistant; 18 AWG, 22 AWG: UL AWM style 2661 VW-1 105C 300V, CSA AWM A/B I/II 80C 300V FT1, UV oil and water resistant |
| Assembly Rating | Mini 16 AWG: 600V 10 A; Mini or micro 18 AWG or 22 AWG: 250V, 4 A |
| Environmental | |
| Enclosure Type Rating | IP67; NEMA 6P 1200 psi (8720 kPa) washdown |
| Temperature Rating [C (F)] | -20...+105 ° (-4...+221 °) |

Approximate Dimensions

Dimensions are in millimeters (inches). Illustrations are not drawn to scale.



Pinout and Color Code

| Color Code | Face View Pinout | | | |
|--------------|--------------------|--------------------|--------------------|---------------------------------|
| | Mini Connector | | Micro Connector | |
| | Male | Female | Male | Female |
| 16 AWG Cable | 1 Black 2 White | 3 Red 4 Green | — | |
| 18 AWG Cable | 1 Black 2 Blue | 3 Brown 4 White | 1 Brown 2 White | 4 Black 5 Not used 3 Blue |

Note: Pinout diagram for end device connector may differ, see page 6-54.



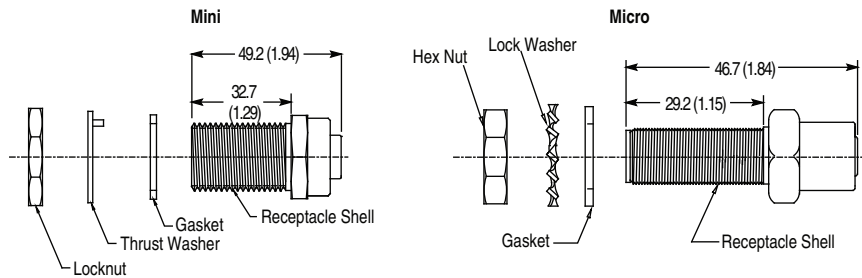
Power Bulkhead Pass-thru

Specifications

| | Mini | Micro |
|-------------------------------|---|-------------|
| Mechanical | | |
| Shell and Lockout Material | Nickel-plated brass | |
| Connector Insert Material | PVC | Nylon |
| Gasket Material | Neoprene | |
| Thrust Washer | Nylon | Steel Alloy |
| Contact Material | Gold-plated palladium/nickel | |
| Electrical | | |
| Assembly Rating | 600V, 8 A | 250V, 4 A |
| Environmental | | |
| Enclosure Type Rating | NEMA 4, 6P, 12, 13; IP67; 1200 psi washdown | |
| Operating Temperature [C (F)] | -20...+105 ° (-4...+221 °) | |

Approximate Dimensions

Dimensions are in millimeters (inches). Illustrations are not drawn to scale.



Receptacles, Auxiliary Power



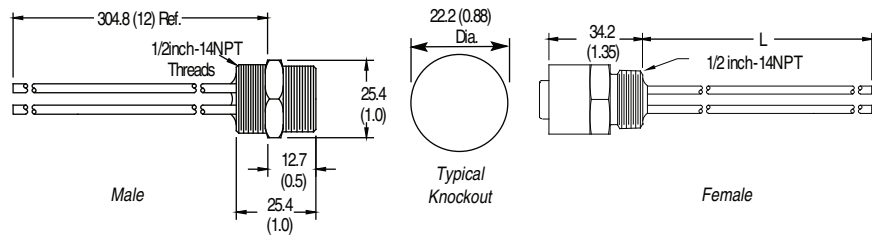
4-pin Female Receptacles

Specifications

| Mechanical | |
|---------------------------|--|
| Receptacle Shell Material | Female: Aluminum with clear sealant Male: Die-cast zinc with clear sealant |
| Connector Insert Material | PVC |
| Contact Material | Gold over nickel-plated brass |
| Cable Type | Oil resistant PVC, 16 AWG stranded copper, 600V, UL Recognized and CSA Certified |
| Electrical | |
| Cable Rating | 600V |
| Assembly Rating | 600V, 10 A |
| Environmental | |
| Enclosure Type Rating | NEMA 6P; IP67; 1200 psi (8720 kPa) washdown |
| Cable Type | -30...+105 ° (-22...+221 °) |

Approximate Dimensions

Dimensions are in millimeters (inches). Illustrations are not drawn to scale.



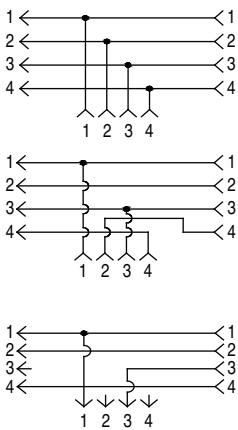


4-Pin Mini Style Power Trunk Tee

Specifications

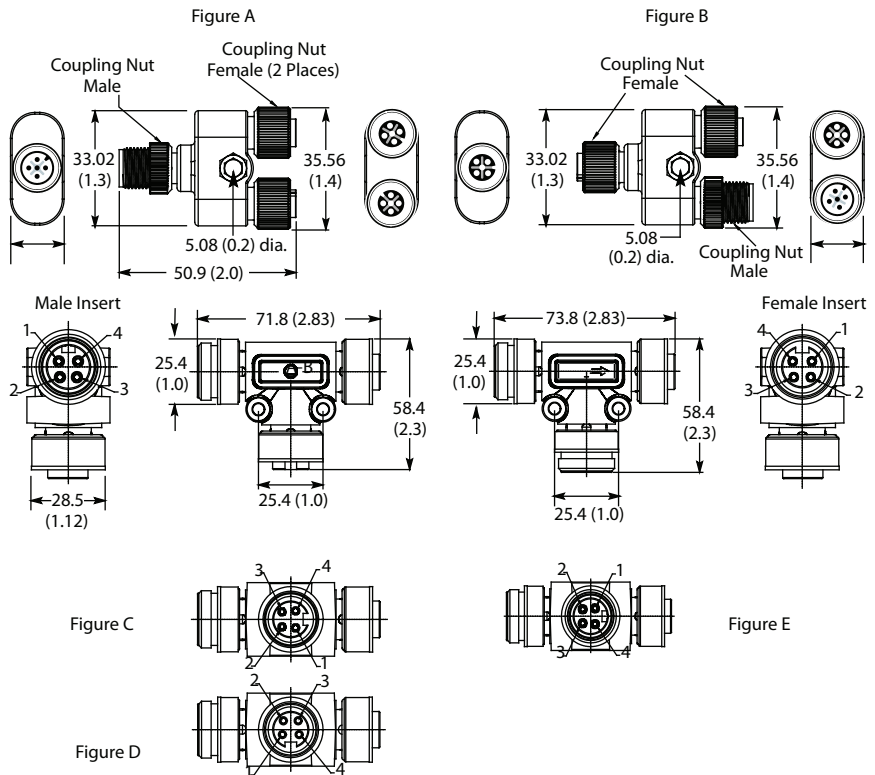
| Mechanical | |
|-------------------------------|--|
| Coupling Nut Material | Epoxy-coated zinc |
| Connector Material | PUR |
| Contact Material | Gold over nickel-plated brass |
| Electrical | |
| Assembly Rating | 250V, 4 A |
| Environmental | |
| Enclosure Type Rating | NEMA 6P, 12 and 13, IP67 (IEC 529), 1200 psi (8270 kPa) washdown |
| Operating Temperature [C (F)] | -20...+70 ° (-4...+158 °) |

Wiring Diagrams



Approximate Dimensions

Dimensions are in millimeters (inches). Illustrations are not drawn to scale.



Pinout and Color Code

| Color Code | Face View Pinout | | | |
|------------|------------------|--|-----------------|--|
| | Mini Connector | | Micro Connector | |
| Female | | | | |
| Male | | | | |

Safety Shorting Plugs, Auxiliary Power

Single-Channel



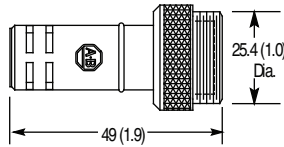
Male Shorting Plug

Specifications

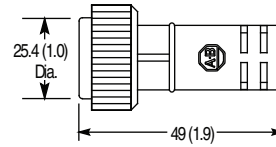
| Mechanical | |
|-------------------------------|--|
| Coupling Nut Material | Epoxy-coated zinc |
| Material | Red Santoprene |
| Contact Material | Gold over nickel-plated brass |
| Electrical | |
| Assembly Rating | 600V, 10 A |
| Environmental | |
| Enclosure Type Rating | NEMA 1, 2, 3, 4, 6P, 12, 13, IP 67, 1200 psi (8720 kPa) washdown |
| Operating Temperature [C (F)] | -25...+70 ° (-13...+158 °) |

Approximate Dimensions

Dimensions are in millimeters (inches). Illustrations are not drawn to scale.

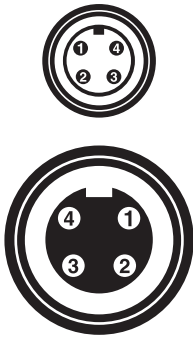


Male Mini Style Shorting Plug

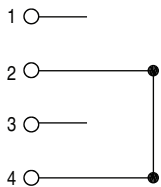


Female Mini Style Shorting Plug

Pinout



Wiring Diagrams



Rockwell Automation maintains current product environmental information on its website at <http://www.rockwellautomation.com/rockwellautomation/about-us/sustainability-ethics/product-environmental-compliance.page>

Allen-Bradley and Rockwell Automation are trademarks of Rockwell Automation, Inc. Trademarks not belonging to Rockwell Automation are property of their respective companies.

www.rockwellautomation.com

Power, Control and Information Solutions Headquarters

Americas: Rockwell Automation, 1201 South Second Street, Milwaukee, WI 53204-2496 USA, Tel: (1) 414.382.2000, Fax: (1) 414.382.4444
 Europe/Middle East/Africa: Rockwell Automation NV, Pegasus Park, De Kleetlaan 12a, 1831 Diegem, Belgium, Tel: (32) 2 663 0600, Fax: (32) 2 663 0640
 Asia Pacific: Rockwell Automation, Level 14, Core F, Cyberport 3, 100 Cyberport Road, Hong Kong, Tel: (852) 2887 4788, Fax: (852) 2508 1846