

Catalog Number
Notes
Type

FEATURES & SPECIFICATIONS

INTENDED USE — Intended for mounting heights up to 16' requiring low to medium light levels. Ideal for light duty task lighting, utility, storage rooms or retail.

CONSTRUCTION — Channel constructed of die-formed cold rolled steel. Sturdy combination reflector and channel cover constructed of die-formed cold rolled steel and secured by quarter-turn latch for easy access to wire-way. Screw on endplates. Available in 2', 4', or 8' tandem wired lengths. Accepts plug-in option for 1, 2 or 3 primary circuits.

Finish: Five-stage iron phosphate pretreatment ensures superior paint adhesion and corrosion-resistance. Reflector and channel finished with a high-gloss baked white enamel.

OPTICS — Solid top or apertured 8% uplight available. Both reflectors are die-embossed.

ELECTRICAL — Thermally protected, resetting, Class P, HPF, non-PCB, UL Listed and CSA Certified ballast is standard. Sound rating depends on lamp/ballast combination.

AWM, TFN, THHN wire throughout, rated for required temperatures.

INSTALLATION — For unit or row installations, surface or suspended mounting.

LISTINGS — UL Listed for 25°C ambient temperatures. 120V, 277V and MVOLT are UL Listed and CSA Certified (standard). 347V is CSA Certified (see Options). NOM Certified (see Options). Suitable for damp locations.

WARRANTY — 1-year limited warranty. Full warranty terms located at www.acuitybrands.com/CustomerResources/Terms_and_conditions.aspx.

Actual performance may differ as a result of end-user environment and application.

Note: Specifications subject to change without notice.

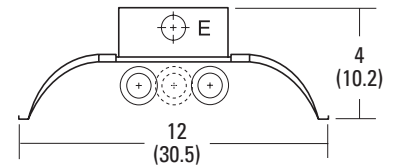
Standard Industrial



2', 4' or 8' length
1 or 2 lamps

Specifications

Length:	24 (61.0)
	48 (121.9)
	96 (243.8)
Width:	12 (30.5)
Fixture depth:	4 (10.2)



All dimensions are inches (centimeters) unless otherwise indicated.

ORDERING INFORMATION

Lead times will vary depending on options selected. Consult with your sales representative.

Example: L 2 32 MVOLT GEB10IS

Series	Number of lamps	Lamp type	Voltage	Options
L Standard industrial, solid top	1	17 17W T8 (24")	120	GEB10IS Electronic ballast, <10% THD, instant start
	2	32 32W T8 (48")	277	GEB10RS Electronic ballast, <10% THD, rapid start for 347V
LA Standard industrial, apertured reflector	Not included	48T8HO 60W T8 slimline (48")	347	GEB10PS Electronic ballast, <10% THD, programmed start
For tandem double-length unit, add prefix T. Example: TL		96T8 59W T8 slimline (96")	MVOLT	EL5 Emergency lighting (500 lumens) ^{1,2}
		96T8HO 86W T8 300mA (96")	Others available	EL6 Emergency lighting (600 lumens) ^{1,2}
				EL14 Emergency lighting (1400 lumens) ^{1,2}
				GLR Internal fast-blow fuse (add X for external) ²
				GMF Internal slow-blow fuse (add X for external) ²
				PLF_ Plug-in wiring. Specify 1, 2 or 3 branch circuits and hot wires (A=Black, B=Red, C=Blue, AB or AC)
				SSR Specular silver reflector finish (95% reflective)
				TILW Tandem in-line wiring
				CSA CSA Certified (Only required for 347V)
				NOM NOM Certified
				PAF Paint after fabrication

Accessories: Order as separate catalog number.

SQ_	Swivel stem hanger (specify length in 2" increments).
1B	Ceiling spacer (adjusts from 1-1/2" to 2-1/2" from ceiling).
WGL	Wire guard, 4' white. Order 2 for 8' fixtures.
THC	Tong hanger.
HC36	Chain hanger - 36" (1pair .36" long).
CONLGC	12" screw-on channel connector.

Notes

- Specify voltage; 120 or 277 only.
- Not available with MVOLT.

MOUNTING DATA

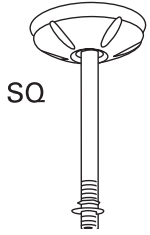
For unit or row installation, surface or suspended mounting.

Unit installation — Minimum of two hangers required.

Row installation — Two hangers per channel required. One per fixture plus one per row if CONLGC installed.

Hooker® (HRC) and HC Hangers — Minimum two per channel (unit and row)

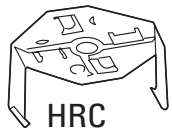
See ACCESSORIES below for hanging devices.



SQ



HC36

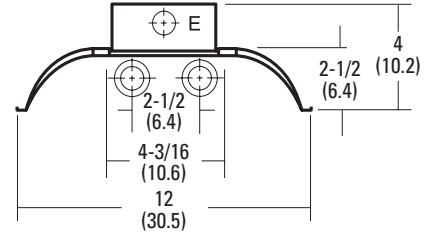
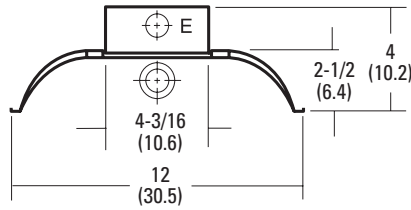


HRC

DIMENSIONS

Inches (centimeters).

Subject to change without notice.

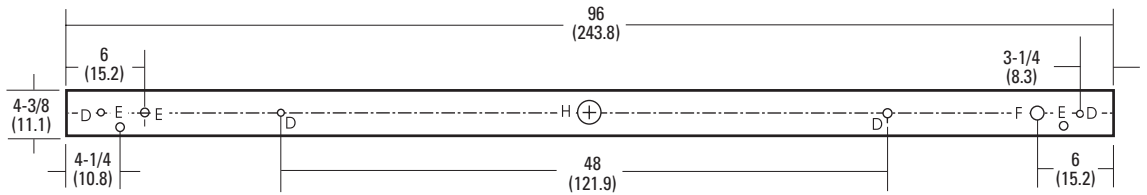
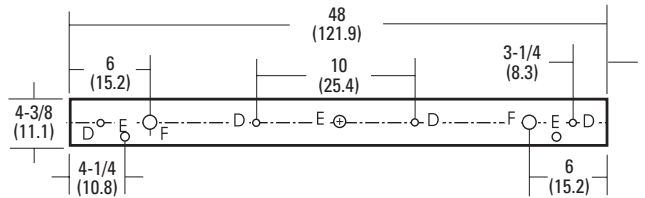
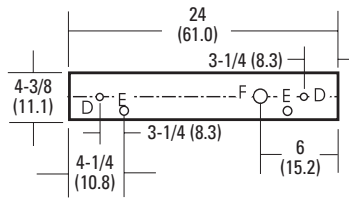


D = 11/16 (1.7) Dia.K.O.

E = 7/8 (2.2) Dia.K.O.

F = 1-1/8 (2.9) Dia.K.O.

H = 2 (5.1) Dia.K.O.



Cord Set Option

Add suffix to end of catalog number, specify voltage.

All cord sets are 6', black. Other configurations available, consult factory.

Suffix	Description
CS1	Straight plug, 120V
CS3	Twist lock, 120V
CS7	Straight plug, 277V
CS11	Twist-lock, 277V
CS25	Twist-lock, 347V
CS97	Twist-lock, 480V
CS93	600V SO cord, no plug

Energy (Calculated in accordance with NEMA standard LE-5)

LER.FL	ANNUAL ENERGY COST*	LAMP DESCRIPTION	LAMP LUMENS	BALLAST FACTOR	WATTS
86.2	\$2.97	(2) T8 F32	2900	.88	55

* Comparative yearly lighting energy cost per 1000 lumens

PHOTOMETRICS

See www.lithonia.com.