



Catalog Number: 4436-GSC1  
Item Description: N1 SCREW CVR GUTTER  
UPC Code: 784572106468

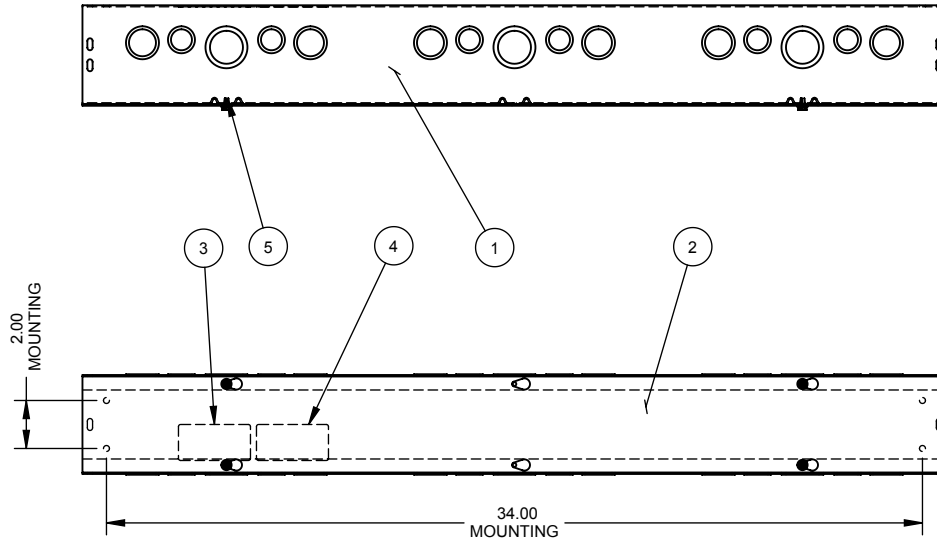
Brand Name: Milbank  
Type: Lay In Wireway  
Application: Wireway  
Standard: UL Listed, Type 1  
Cover Type: Screw Cover  
Enclosure: Indoor Enclosure  
Nominal Cross Section: 4x4  
Straight Section Length: 36  
Material: Steel with Powder Coat Finish  
Finish: ANSI 61 Gray  
Knockouts: True



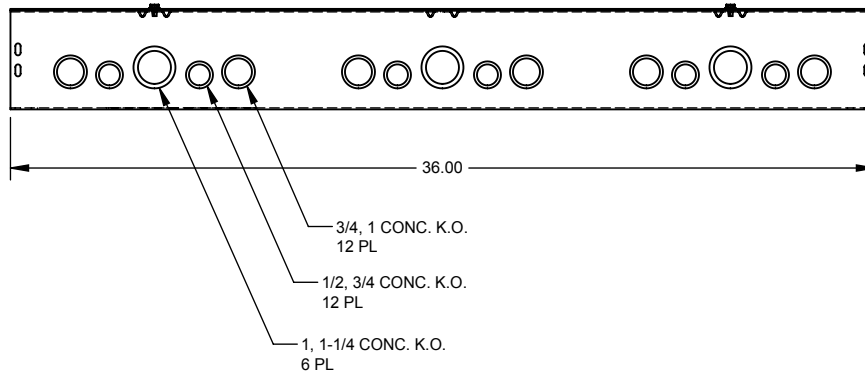
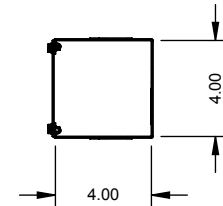
*Utility requirements may vary. Always consult the serving utility for their requirements prior to ordering or installing this equipment. This product must always be installed by a licensed electrician. Installation of this equipment may require local electrical inspector approval.*

CATALOG#	LABEL#
4436-GSC1( )	1002943
RC-4436-GSC1-( )	1125051
SPS-443( )	1132575

NO.	QTY.	PART NO.	DESCRIPTION
1	1	(SEE CHART)	BACK
2	1	(SEE CHART)	PLATE/COVER
3	1	(SEE CHART)	LABEL (U/L LISTING)
4	1	1002900	LABEL, WIREWAY FITTING
5	4	1001290	SCREW, 10-32 X 5/16
6	2	1002880	BAG ASSY.


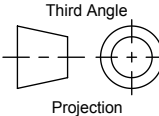


SUFFIX	BACK #	COVER #
-SU	1001304	1003295
-SUC	1128836	1128830
-SO	1128837	1011805
-SUNK	1010672	1003295
-NK	1010669	1011805
-SUNKC	1128838	1128830



SUFFIX	FINISH
NONE	PAINTED
-NP	NOT PAINTED

NOTE:  
1. PLACE BAG ASSY INSIDE ENCLOSURE. (NOT SHOWN)

Material:	16 GA. - SEE CHART	 General Offices: Kansas City, MO													
Finish:	SEE CHART														
Tolerances: Unless Specified Otherwise X.X ±.1 X.XX ±.03 X.XXX ±.015 X° ±2°		Title:	SCREW COVER WIREWAY 4 x 4 x 36, TYPE 1 NEMA ENCLOSURE												
 Third Angle Projection		Catalog No.:	(SEE CHART)												
		Customer:	MILBANK STANDARD												
		Drawing No.:	<b>238</b>												
D	8-28-07	ADDED BACK & COVER CHART ECO. 15946	DL	E	6/3/09	1002880 QTY WAS 3 (ECO #18347)	D.F.	Scale:	NTS	Checked By:		Date:	03/19/02	Sheet	1 of 1
D1	5/1/08	ADDED CHART & REMOVED NOTE#2 (ECO.17139)	JLT					Drawn By:	DY	Approved By:					