



Catalog Number: 16166-SC1  
Item Description: N1 SCREW COVER ENCL  
UPC Code: 784572102859

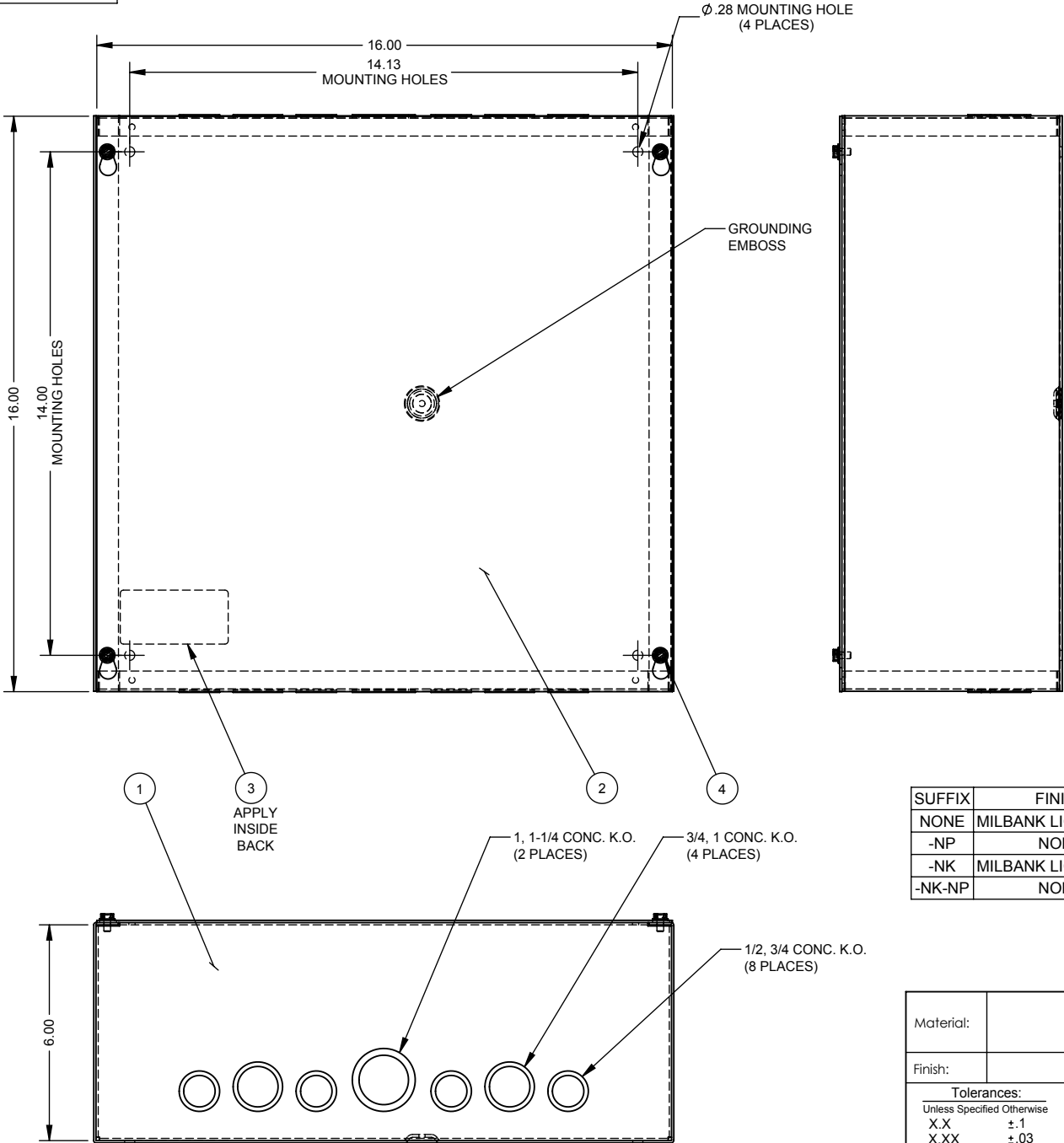
Brand Name: Milbank  
Type: Screw Cover  
Special Features: Cover Secured with Plated Screws  
Application: Enclosure for Mounting Electrical Equipment  
Standard: UL Listed  
Number Of Outlet: 0  
Material: Steel with Powder Coat Finish  
Color: ANSI 61 Gray  
Mounting: Wall Mount  
NEMA Rating: Type 1



*Utility requirements may vary. Always consult the serving utility for their requirements prior to ordering or installing this equipment. This product must always be installed by a licensed electrician. Installation of this equipment may require local electrical inspector approval.*


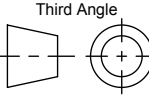
PREFIX	LABEL NO.
NONE	1002135
RC-	1125021

ITEM	QTY	PART NUMBER	DESCRIPTION
1	1	(SEE CHART)	BACK WELDMENT
2	1	(SEE CHART)	COVER PLATE
3	1	(SEE CHART)	LABEL (UL)
4	4	1001290	SCREW, 10-32 X 5/16
5	1	1002475	BAG ASSY (GROUND SCREW)
6	0.5	1002940	CARTON 2-PER (NOT SHOWN)



NOTE:  
1 PLACE BAG ASSY INSIDE ENCLOSURE (NOT SHOWN).

SUFFIX	FINISH	WELDMNT NO.	COVER NO.	INSTALL KOS
NONE	MILBANK LIGHT GRAY	1138259	1157719	YES
-NP	NONE	1157715	1107070	
-NK	MILBANK LIGHT GRAY	1157714	1157719	NO
-NK-NP	NONE	1157716	1107070	

Material:	SEE CHART	 General Offices: Kansas City, MO	
Finish:	SEE CHART	Title:	16166 SCREW COVER TYPE 1 ENCLOSURE
<b>Tolerances:</b> Unless Specified Otherwise X.X ±.1 X.XX ±.03 X.XXX ±.015 X" ±2"		Catalog No.:	16166-SC1
<b>Third Angle</b>  Projection		Ref:	
Scale: NTS		Drawing No.:	<b>1001556</b>
Drawn By: DY	Checked By:	Date:	Sheet 1 of 1

NEMA DWG.: #137

D3	5-7-09	UPDATED MATERIALS AND PAINTS ON CHART &	D4	2/16/12	CHART GALV. VERSIONS (ECO #21918)	D.F.	Scale:	NTS	Checked By:		Drawing No.:	<b>1001556</b>
		FIXED NUMBER FOR GALV. BACK WELD. ECO. 18242	DL	8/1/12	DELETE 1002646; ADD 1001290 (ECO #22728)	D.F.	Drawn By:	DY	Approved By:		Date:	Sheet 1 of 1