



BURNDY Catalog Number
UPC Number
Description
Status

YDS76
7818100146911
2/0 SLD CU FULL TEN SPLI
Active



Web Use
BURNDY Product Line

Dimensional

B Length (Fraction) 3
Length (in) 6.19
B Length (in) 2.97
Length (Fraction) 6-5/8

General

Copper splice designed to develop full rated breaking strength of hard drawn and medium hard drawn solid copper conductor. ANSI C119.4 Class 1 (Full Tension), Die index: 166
Y

Product Description

Prefilled (Oxide Inhibitor)

Conductor(s)

Aluminum Coated Steel Size (Range) N/A
Copper Solid Size (Range) 2/0 AWG
Galvanized Steel Size (Range) N/A
Copperweld Solid Size (Range) N/A
Copper Stranded (Range) N/A
CopperWeld Stranded Size (Range) N/A

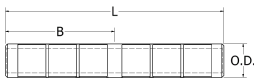
Physical

Type of Splice Full Tension Sleeve
Index Number 166

Approvals / Certifications

UL Listed N
CSA Certified N
ROHS Compatible Compliant
UL Recognized N
CULUS N

Documentation



For further technical assistance, please contact us

BURNDY LLC - USA

47 East Industrial Park Drive
Manchester NH 03109

BURNDY Technical Services

47 East Industrial Park Drive
Manchester NH 03109

Hours: 8:00 AM - 5:00 PM
Monday - Friday
Phone: 800-346-4175