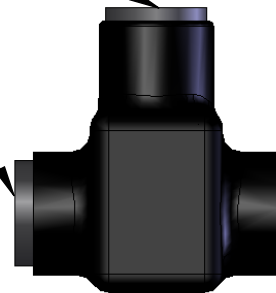
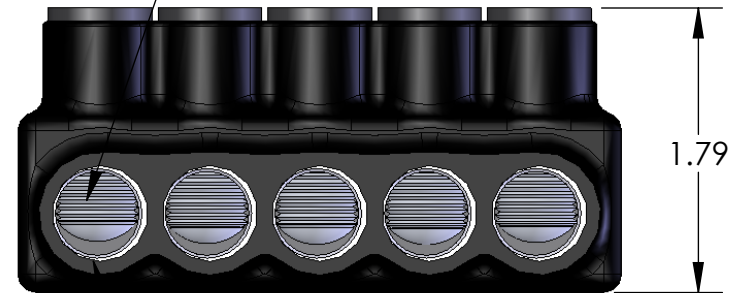


REMOVABLE CAP
TO TIGHTEN SCREW
(REPLACE WHEN COMPLETE)

REMOVABLE CAP
FOR DUAL ENTRY
(INSERT IN OTHER SIDE)



1/4 INTERNAL HEX PRESSURE SCREW



WIRE ENTRY POINT
WIRE RANGE: 3/0 - #6AWG
PRE-FILLED W/ OXIDE INHIBITOR

IPLD3/0-5 SHOWN

PART NUMBER	NO. OF PORTS	LENGTH
IPLD3/0-3	3	2.63
IPLD3/0-4	4	3.41
IPLD3/0-5	5	4.19
IPLD3/0-6	6	4.97
IPLD3/0-7	7	5.75
IPLD3/0-8	8	6.53
IPLD3/0-10	10	8.09
IPLD3/0-14	14	11.21

CONTACT NSi FOR SALES @ 800.321.5847

NOTES:

- CONNECTOR MANUFACTURED FROM 6061-T6 ALUMINUM ALLOY.
- UL LISTED PER UL486A/B SPECIFICATIONS FOR 600V.
- DUAL RATED FOR 90°C COPPER AND/OR ALUMINUM CONDUCTOR.
- COLD TEMPERATURE RATED TO -45°C.
- HIGH DIELECTRIC STRENGTH INSULATION IS ABRASION, CHEMICAL AND UV RESISTANT.

		POLARIS SALES . CO . INC	
<small>PROPRIETARY AND CONFIDENTIAL</small>		<small>11625 PROSPEROUS DRIVE ODESSA, FL 33556</small>	
<small>THE INFORMATION CONTAINED IN THIS DRAWING IS THE SOLE PROPERTY OF POLARIS SALES CO. INC. ANY REPRODUCTION IN PART OR AS A WHOLE WITHOUT THE WRITTEN PERMISSION OF POLARIS SALES CO. INC. IS PROHIBITED.</small>		TITLE: INSULATED DUAL ENTRY 3/0 CONNECTOR	
<small>NAME</small>		<small>DATE</small>	
<small>DRAWN BY</small> S.PARRY		<small>6/2012</small>	
MATERIAL: N/A		SCALE: N/A	
DWG. NO.		IPLD3/0-	
SHEET: 1 OF 1			