

# H368NR

Safety switch, heavy duty, fusible, 1200A, 3 poles, 500 hp, 600 VAC/DC, NEMA 3R, neutral factory installed



## Main

Product	Single Throw Safety Switch
Current Rating	1200 A
Number of Poles	3
Voltage Rating	600 V AC/DC
Wire Size	AWG 3/0...750 kcmil copper or aluminium
Disconnect Type	Fusible disconnect
Short Circuit Current Rating	200 kA maximum L
Mounting Type	Surface
Factory Installed Neutral	Neutral (factory installed)
Electrical Connection	Lugs
Duty Rating	Heavy duty
Certifications	UL listed file E2875
Enclosure Rating	NEMA 3R galvanized steel

## Complementary

Maximum Horse Power Rating	200 Hp 480 V AC 50...60 Hz 3 phase NEC 240.6 500 Hp 480 V AC 50...60 Hz 3 phase NEC 430.52 250 Hp 600 V AC 50...60 Hz 3 phase NEC 240.6 500 Hp 600 V AC 50...60 Hz 3 phase NEC 430.52 50 hp 600 V DC
Width	36.62 in (930.15 mm)
Height	69.13 in (1755.90 mm)
Maximum Depth	17.75 in (450.85 mm)
Tightening torque	375 lbf.in (42.37 N.m) 0.13...0.59 in <sup>2</sup> (85.01...380 mm <sup>2</sup> ) AWG 3/0...750 kcmil)

## Ordering and shipping details

Category	00054 - H&HU SW,NEMA3R,400-1200A
Discount Schedule	DE1
GTIN	00785901442479
Nbr. of units in pkg.	1
Package weight(Lbs)	382 lb(US) (173.27 kg)
Returnability	Yes
Country of origin	MX

## Packing Units

Unit Type of Package 1	PCE
Package 1 Height	6.17 ft (1.88 m)
Package 1 width	2.50 ft (0.762 m)
Package 1 Length	3.15 ft (0.96 m)

The information provided in this documentation contains general descriptions and/or technical characteristics of the performance of the products contained herein. This documentation is not intended as a substitute for and is not to be used for determining suitability or reliability of these products for specific user applications. It is the duty of any such user or integrator to perform the appropriate and complete risk analysis, evaluation and testing of the products with respect to the relevant specific application or use thereof. Neither Schneider Electric Industries SAS nor any of its affiliates or subsidiaries shall be responsible or liable for misuse of the information contained herein.

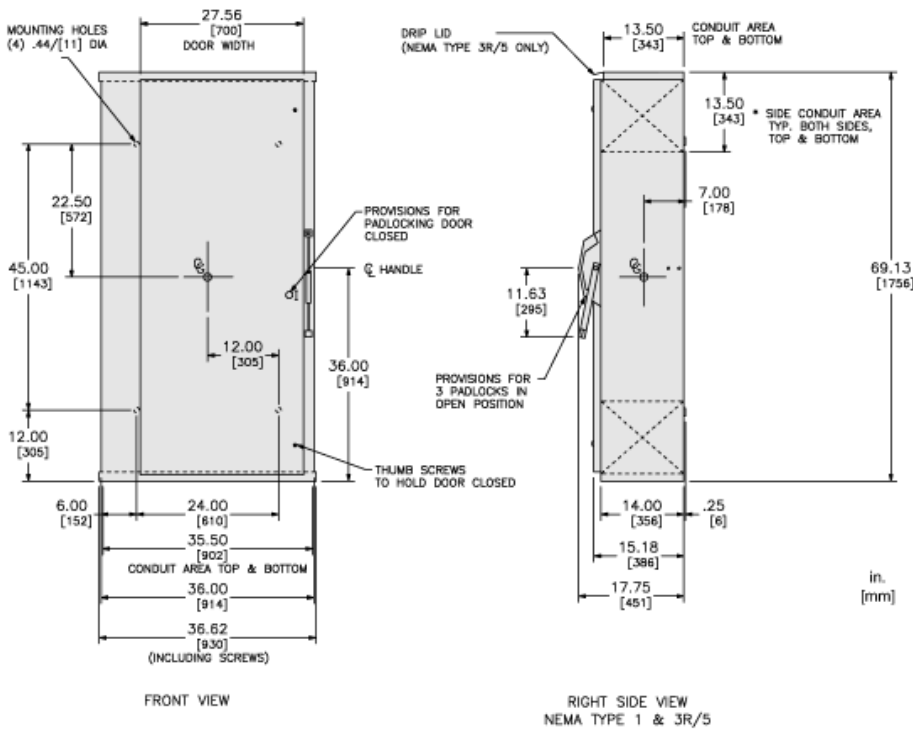
## Offer Sustainability

Sustainable offer status	Green Premium product
California proposition 65	WARNING: This product can expose you to chemicals including: Lead and lead compounds, which is known to the State of California to cause cancer and birth defects or other reproductive harm. For more information go to <a href="http://www.P65Warnings.ca.gov">www.P65Warnings.ca.gov</a>
REACH Regulation	<a href="#">REACH Declaration</a>
EU RoHS Directive	Compliant <a href="#">EU RoHS Declaration</a>
Mercury free	Yes
RoHS exemption information	<a href="#">Yes</a>
China RoHS Regulation	<a href="#">China RoHS Declaration</a>
Environmental Disclosure	<a href="#">Product Environmental Profile</a>
PVC free	Yes
Halogen content performance	Halogen free plastic parts product

## Contractual warranty

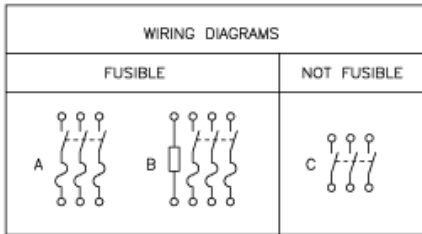
Warranty	18 months
----------	-----------

## Approximate Dimensions



CATALOG NUMBER	VOLTAGE RATINGS	WIRING DIAG.	3 PHASE HORSEPOWER RATINGS						DC HORSEPOWER RATINGS			
			240VAC		480VAC		600VAC		250VDC		600VDC	
			STD	MAX.	STD	MAX.	STD	MAX.	STD	MAX.	STD	MAX.
H32B	240VAC;250VDC	A	100	250	-	-	-	-	50	50	-	-
H32BR	240VAC;250VDC	A	100	250	-	-	-	-	50	50	-	-
H32BN	240VAC;250VDC	B	100	250	-	-	-	-	50	50	-	-
H32BNR	240VAC;250VDC	B	100	250	-	-	-	-	50	50	-	-
H36B	600VAC;600VDC	A	100	250	200	500	250	500	-	-	50	50
H36BR	600VAC;600VDC	A	100	250	200	500	250	500	-	-	50	50
H36BN	600VAC;600VDC	B	100	250	200	500	250	500	-	-	50	50
H36BNR	600VAC;600VDC	B	100	250	200	500	250	500	-	-	50	50
HU36B	600VAC;600VDC	C	100	100	-	500	-	500	-	-	50	50
HU36BR	600VAC;600VDC	C	100	100	-	500	-	500	-	-	50	50

Wiring Diagrams



TERMINAL LUGS			
AMPERES	MAX. WIRE	MIN. WIRE	TYPE
1200	(4)750 KCMIL	(4)#3/0 AWG	75°C AL OR CU

FUZE PROVISIONS			
AMPERES	TYPE	AMPERES	TYPE
1200	CLASS "L"	800	CLASS "L"