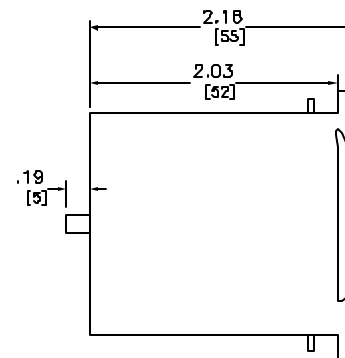
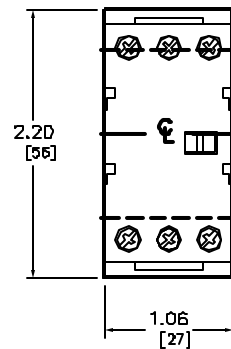
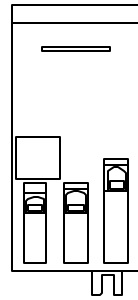


SUPPLY	CONSUMPTION	AUX. CONTACTS		
		NO	NC	
AC	4.2 VA	2	-	CA2SK2D
DC	2.2 W	2	-	CA3SK2D

CA2SK AND CA3SK RELAYS			
VOLTAGE	50/60HZ CODE (1)	DC CODE (1)	
12	-	JD	
24	B7	BD	
36	-	CD	
48	E7	ED	
110	F7	SD	
120	G7	-	
220	M7	-	
230	P7	-	
240	U7	-	
380	Q7	-	
400	V7	-	
480	T7	-	

CA2SK = AC CONTROL RELAY
CA3SK = DC CONTROL RELAY



Catalog Number: CA2SK20(1), CA3SK20(1)
 Ratings: -
 UL File/CCN: E148.38/CCN NKCR
 CSA File/Class: LR12721/3211 03
 Meets Standards: IEC 337-1, 947-5, NFD B3-140, VDE 0660, BS4794, CE
 Weight: -
 Wire Size: (2)-#20 AWG TD (1)-#16 AWG
 Terminal torque: -
 Mounting Hwd.: 35mm DIN TRACK

DUAL DIMENSIONS: INCHES
MILLIMETERS

IEC INDUSTRIAL CONTROL RELAYS (SK LINE)
CA2SK20(1), CA3SK20(1)



DWG# E0702101-01
NO.