

Switches, Double Pole  
 20A, 120-277V AC  
 HBL® Extra Heavy Duty Industrial Switch

# HUBBELL

## Features

- Large brass binding head screws with deep slots
- Abuse resistant nylon toggle
- Strip gauge for accurate wiring

## Ordering Information

| Description                 | Toggle Color | UPC          | Catalog Number |
|-----------------------------|--------------|--------------|----------------|
| Toggle, back and side wired | Red          | 783585431727 | HBL1222R       |

## Listings

UL Listed  
 CSA Certified  
 Fed. Spec. W-S-896

## Specifications

|                 |                |
|-----------------|----------------|
| Top Material    | Thermoset      |
| Base Material   | Thermoset, Red |
| Toggle Material | Nylon          |
| Contacts        | Silver Alloy   |
| Terminal Screws | Brass          |
| Ground Screw    | Brass (Green)  |

## Performance

### Electrical

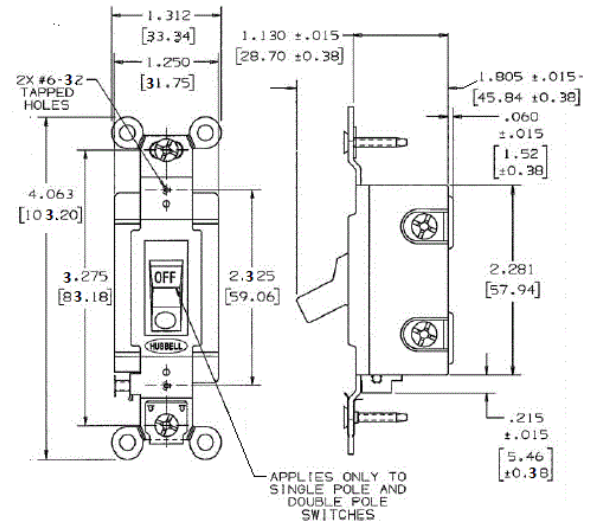
|                         |  |
|-------------------------|--|
| Dielectric Voltage      | Withstands 1500V AC minimum for 1 minute       |
| Max. Continuous Current | 20A  |
| Max. Working Voltage    | 277V AC  |
| Overload                | Minimum 4.8 times rated current for 100 cycles |
| Temperature Rise        | 30°C maximum at rated current                  |

### Mechanical

Terminal Accommodations #14 AWG min. - #10 AWG max. solid and stranded copper wire only

### Environmental

|                       |  |
|-----------------------|--|
| Flammability          | UL 94V-2   |
| Operating Temperature | Max. continuous: 75°C; Min. continuous: -40°C without impact |



## Online Resources

Customer Use Drawing  
 eCatalog  
 Installation Instructions

Dimensions in Inches (mm)

Hubbell Wiring Device-Kellems • Hubbell Incorporated (Delaware) • 40 Waterview Drive • Shelton, CT 06484

Phone (800) 288-6000 • Fax (800) 255-1031 • Specifications subject to change without notice.

