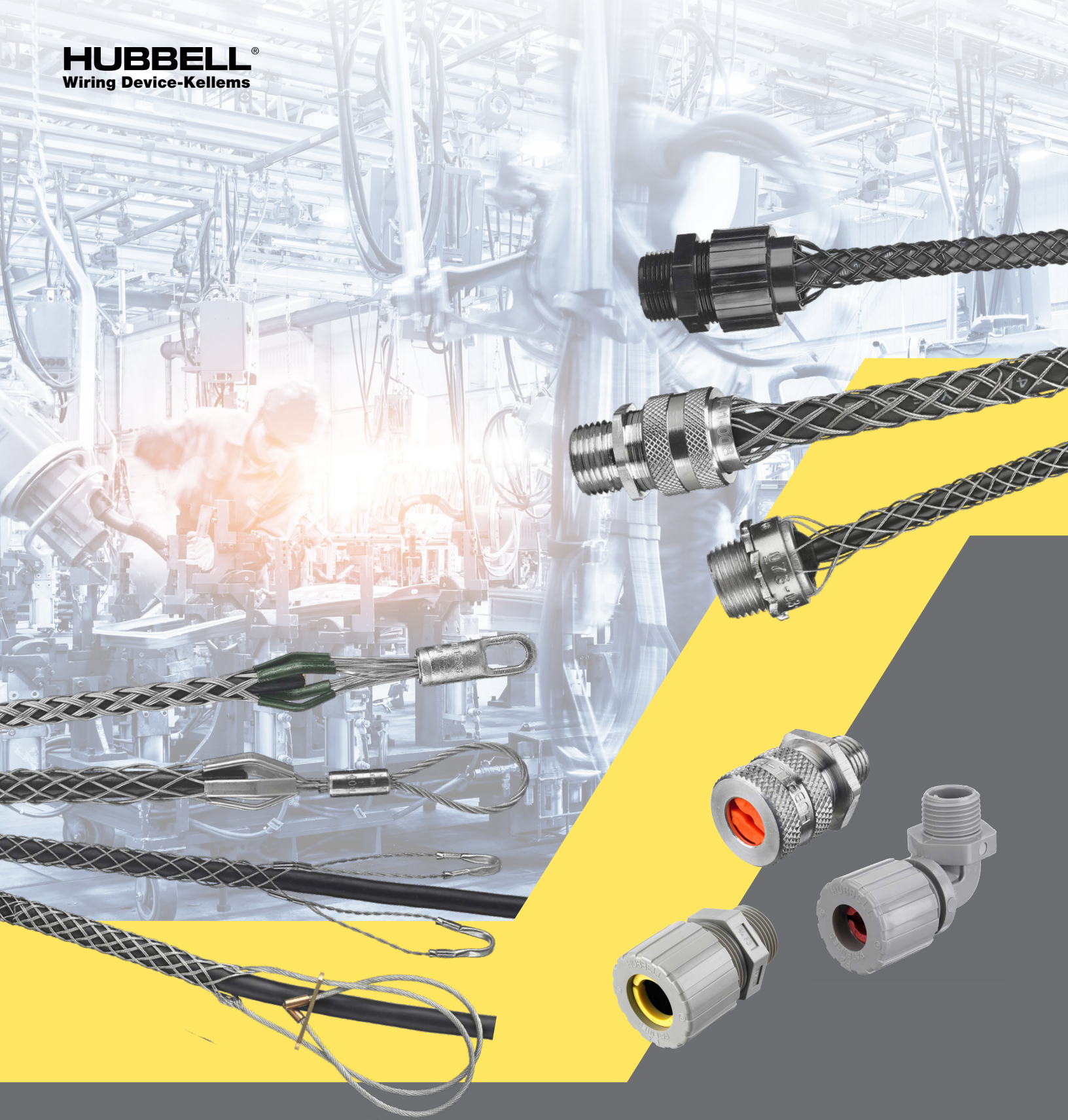


HUBBELL®
Wiring Device-Kellems



Kellems®
Wire Management Solutions

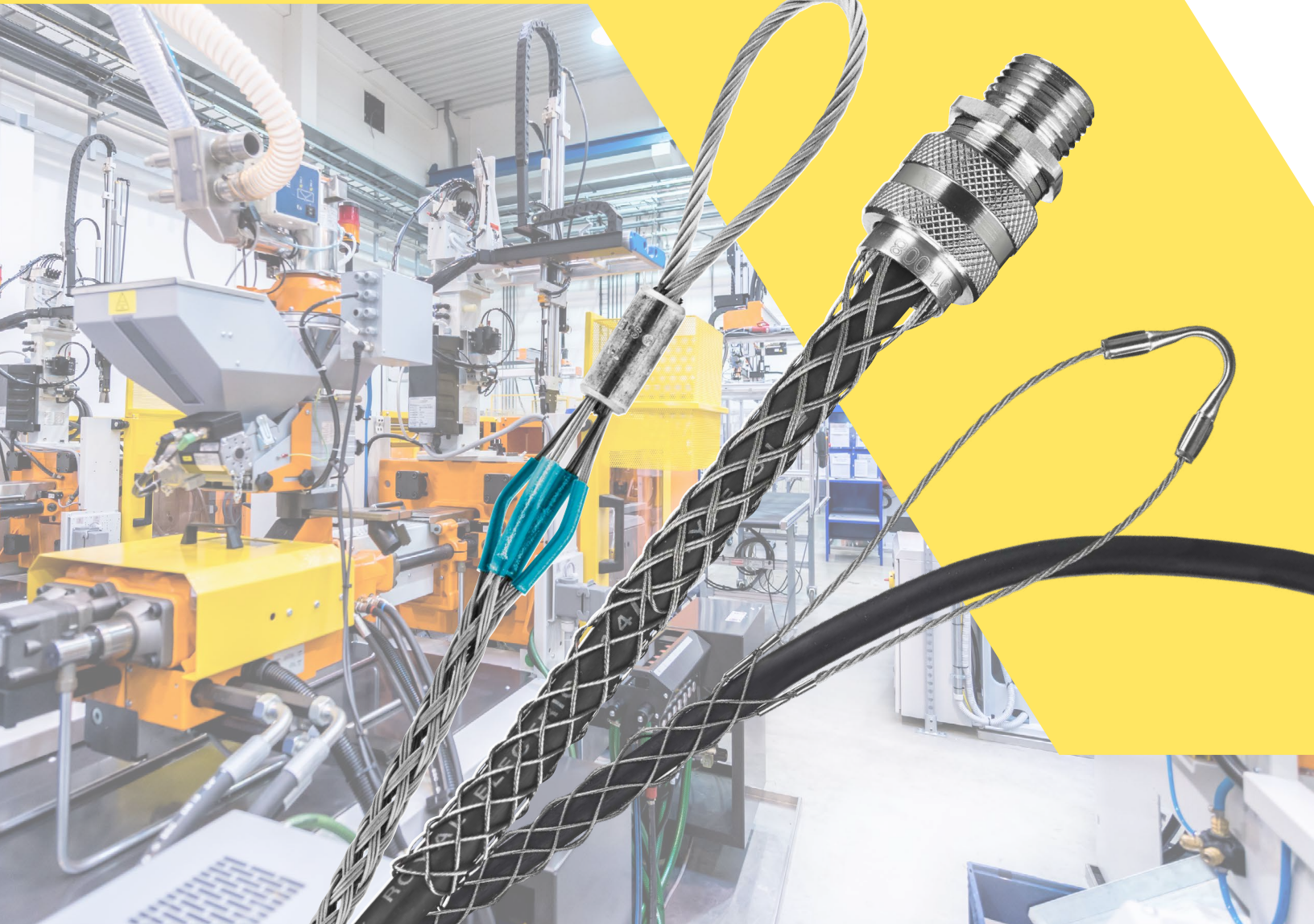


Genuine Kellems®

*The original, most-selected, most-proven
wire management solutions*

In a facility, underground, on machinery or around the operational environment, wire and cable components are a ubiquitous part of our industrial infrastructure—and the ability to manage them optimally, free from breakage or damage, both during installation and in long term use can mean the difference between optimum productivity and costly downtime and repair.

Kellems pioneered the wire management solution industry with the invention of the strain relief mesh grip in 1927, and today Hubbell offers a complete Kellems product line for every cable and wire need in every industry, in categories including strain relief grips, hose containment grips, cord connectors, pulling grips, support grips, liquidtight conduit systems and more.





As the long term leader in delivering wire management solutions, Kellems has helped more companies succeed in more applications than anyone else, anywhere. With large and fast moving—and predominantly U.S. sourced—inventories of a wide range of products, we can provide fast and reliable delivery times. In addition, we are expert at supplementing our broad product line with custom-engineered specialty grips to meet any unique requirement, at any time.

Look through the offering included here, and call Hubbell for a high quality, proven reliable, one stop shop solution to all your wire and cable management needs. We are always at your service.



Strain Relief Grips

The development of Kellems strain relief grips spearheaded the concept of wire management solutions in 1927 and is still the most frequently chosen brand for use in a wide range of industries.

A deluxe cord grip is a type of strain relief grip. Deluxe cord grips provide additional arc of bend control—rest outside the enclosure to reduce tension on cables, joints and terminals, as well as eliminating damage due to flexing, bending, twisting or vibration. This juncture—often called the rigid fatigue point—is where failures tend to first occur, and Kellems strain relief grips protect the components saving the expense of damaged cables and downtime.

The design features the original Kellems wire mesh, exert a uniformly distributed compressive force over a large area of cable for optimum safety. Strain relief grips can be used indoors or outdoors and can even be readily adjusted or repositioned, facilitating equipment relocation.



Save time and money—Increase life and reduce costly downtime where the cable is subjected to bending and flexing

Flexibility—Readily installed, adjusted, repositioned or removed and reused to accommodate equipment relocation

Ease of installation—Fittings provide easy attachment to threaded electrical enclosures with no special tools

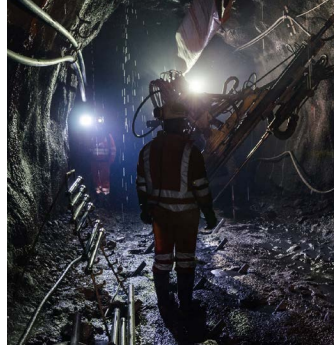
Safety—Bushing seals out oil, water and other contaminants that can short out the system which can cause injury or expensive downtime



Applications

Deluxe cord grips are used indoors and outdoors where subjected to moisture, splash or submersion.

Specific applications include the wiring of electrical enclosures, such as crane and hoist pendant drop stations, bus drop installations, hand tools, extension cords, construction equipment, processing equipment and materials handling equipment.



Type	Deluxe Cord Grip			Dust-Tight Strain Relief (Indoor Only)	Liquidtight Flexible Conduit Grip	
Mesh Fitting	Stainless Steel Aluminum	Stainless Steel Nylon	Non-metallic Grip Nylon	Stainless Steel	Galvanized Steel Metallic/ Non-Metallic	
Features	<ul style="list-style-type: none"> Oil/watertight bushing Double-single weave 	<ul style="list-style-type: none"> Oil/watertight bushing Double-single weave 	<ul style="list-style-type: none"> Liquidtight bushing Double-single weave 	<ul style="list-style-type: none"> Liquidtight bushing Double-single weave 	<ul style="list-style-type: none"> Zinc plated steel locknut Neoprene gasket Single weave 	<ul style="list-style-type: none"> Liquidtight fitting Stainless steel mesh Sealing 'O' ring (optional) Single weave
Applications	<ul style="list-style-type: none"> Indoor or Outdoor Moisture or Splash Control Cabinets Crane/Hoist Pendant Drop Hand Tools Light Fixtures Transformers Portable Equipment & Pumps Commercial Cooking/Processing Equipment 					

Support Grips

Electrical cables dropping down from the ceiling are prevalent in factories. Whether they are constantly hanging vertically, on an angle, and/or are subject to being pulled across the room, the dead weight and pull stresses on the internal structures from the cable itself, as well as the weight of devices, keep them under threat of pullout from the connections, resulting in power failures and unscheduled downtime.

Kellems offers support grips to meet every need in the factory, in a wide variety of eye styles and materials including bronze, 302-304 series stainless steel and even non-metallic Aramid fiber, delivering outstanding strength as well as exceptional resistance to rust and corrosion.

They provide unmatched protection, with Kellems unique strand equalizer system ensuring equal loading of the weight across a long distance so that there are no areas of strain, as opposed to other solutions which leave smaller areas vulnerable to higher stresses and breakage. Kellems support grips are the most frequently trusted method for reducing the threat of costly maintenance and repair and maximizing productive time in factories of all kinds—and have been for decades.

Safety—Conforms to shape of cable, removing strain from individual conductors and minimizes the opportunity for electrical accidents and power failure

Security—Permits cable to expand and contract without loss of holding action

Ease of installation—Easily installed, repositioned, relocated or removed without any special skill or tool

Eliminates costly downtime and maintenance



Applications

Support grips are used indoors or outdoors on any application that requires supporting cable, metal rods, hose and tubing.

Specific applications include buildings, poles, excavations, mine shafts, towers, elevators, electrical potheads, terminators and other structures.



Type	Standard Support Grip	Heavy Duty Support Grip	Service Drop	Bus Drop	Fiber Optic Grip
Features	<ul style="list-style-type: none"> • Double, Universal or Offset Eye • Closed or Split Mesh, Lace or Rod Closing 	<ul style="list-style-type: none"> • Single or Double Eye • Closed or Split Mesh, Lace Closing Option 	<ul style="list-style-type: none"> • Single or Universal Eye • Closed Mesh • Single or Multi-Weave 	<ul style="list-style-type: none"> • Single or Universal Eye • Wide Range 	<ul style="list-style-type: none"> • Single, Flexible or Swivel Eye • Closed or Split Mesh, Rod Closing Option
Applications		<ul style="list-style-type: none"> • Commercial Towers • Elevator Shafts • Buildings • Utility Poles - telephone and power • Construction Sites • Factories • Electrical Cord Strain Relief • Air/Water Hose Strain Relief 			

Pulling Grips

The need to feed electrical cable, bare conductor, wire rope, fiber and other materials through walls, ceilings, underground channels and other tight, blind enclosures is ubiquitous throughout industry in construction, power utility, factory service lines and many other applications.

Pulling grips are the invaluable tools that help technicians meet these challenges, providing an efficient and reusable method for safely and efficiently moving cable through ducts, sheaves and other industrial spaces. Kellems pulling grips are constructed with high quality wire mesh which expands easily and encloses cables or bundles snugly, with a minimum diameter build-up, creating a smooth, slim profile that reduces the chance of snagging and allows for easy passage.

Kellems pulling grips utilize engineered shoulder protectors to hold the cable securely, further ensuring smooth movement over line stringing blocks, conduit bends and other rough spots, and they protect the leading edge of the grip from abrasion in motion. They are highly engineered to ensure that there is no buildup of tension or strain at any point on the cable throughout the placement process. In addition, Kellems pulling grips are constructed with high quality, flexible, high strength galvanized steel strand for long duty life.



Safety—The galvanized steel mesh grip provides strength for secure pulling jobs and a slim profile with little build-up; it has flexibility to follow cable path

Security—Heavy-duty eye styles for underground wiring and overhead heavy-duty pulling of service lines and new construction cable

Superior Design—Shoulder protectors contain the cable inside the grip and smooth the passage of the grip over line stringing blocks or conduit bends; they protect the leading edge of the grip from abrasion

Accessories/Attachments—Swivels are essential to the efficiency and safety of any high tension application



Applications

Specific Pulling Grips are designed for pulling aluminum or copper bare conductor, ground wires, messenger strands, wire rope and insulated cables for overhead and underground transmission line stringing applications.



Type	DUA-PULL Grip	Multiple Strength Style Grip	K-Type Grip	T-Type Grip	Slack Grip	Non-Conductive Grips
Features	<ul style="list-style-type: none"> • Flexible Eye • Double Weave Mesh 	<ul style="list-style-type: none"> • Rotating or Flexible Eye • Multi- Weave Mesh 	<ul style="list-style-type: none"> • Rotating Eye • Double Weave Mesh 	<ul style="list-style-type: none"> • Flexible Eye • Short or Double Weave Mesh 	<ul style="list-style-type: none"> • Offeset Eye • Closed or Split Mesh, Lace or Rod Closing 	<ul style="list-style-type: none"> • Flexible Eye • Double Weave Mesh
Applications	<ul style="list-style-type: none"> • Utility work • Service lines in industrial and commercial buildings • Light-duty underground transmission line stringing • Fiber Optic 					

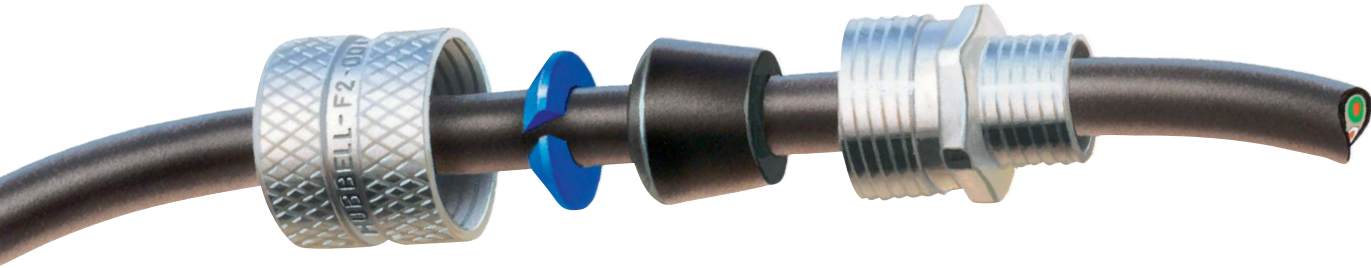
Cord Connectors

Cord connectors provide strain relief, guard against pull-outs and create watertight seals at junctures where cables enter panels, equipment or other vulnerable interfaces.

Far superior to cable clips and “bushing only” designs, Kellems Cord Connectors feature a patented GOTCHA® ring with innovative split and hinge engineering, preventing friction and allowing for precise adjustment to the cord as the connector nut is tightened. Their machined steel design allows for tightening the compression nut and NPT hub without stripping the threads.

The Kellems Cord Connector’s lubricated neoprene bushing compresses tightly to keep liquids out while allowing the nut to be easily tightened.

The Kellems Cord Connector line is also one of the broadest in the industry, with high quality components available in aluminum, plated steel, nylon and stainless steel, and in NPT hub sizes from ¼" to 3" in straight male end, 90°, 45°, female and underground feed connectors, ensuring a high quality solution..



Safety—Lubricated neoprene bushing compresses easily for a liquidtight seal and added pull-out protection

Security—Machined threads provide a strong positive seal; the tapered interior dome easily drives the bushing into the connector body

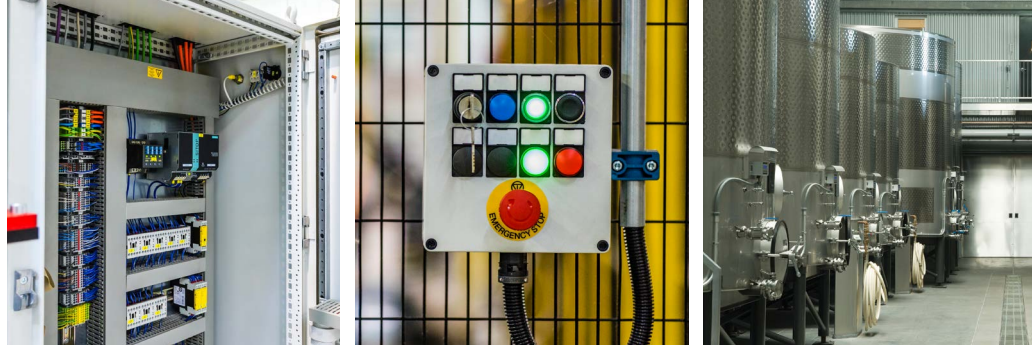
Patented Design—The patented GOTCHA® ring incorporates a split hinge design to prevent friction and provide strain relief, also color-coded for sizing identification

Offering—Hubbell offers a full line of machined aluminum cord connectors in NPT hub sizes ¼" through 1" and cast aluminum 1" to 3"



Applications

Specific applications include the petroleum and oil refining, beverage processing, chemicals and fertilizers, waste control operations, food and sugar processing, paper and pulp mills, marine and oceanographic, mining, engraving and photography, medical equipment, and distilling and brewing industries.



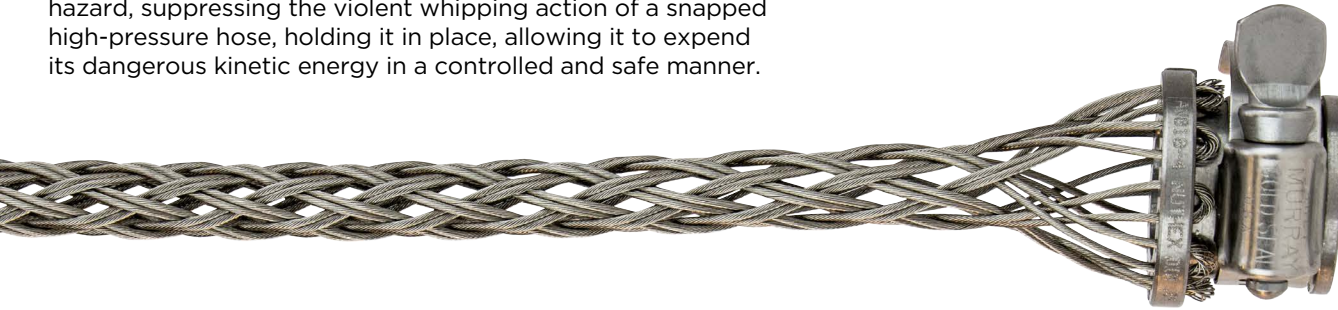
Type	Straight Male	45° and 90° Male/Female	Underground Feeder	Low Profile	Junior Miniature
Features	<ul style="list-style-type: none"> • Machined Aluminum • Zinc Plated Steel • Stainless Steel • Nylon • Cast Aluminum • Malleable Iron 	<ul style="list-style-type: none"> • Machined Aluminum • Zinc Plated Steel • Cast Aluminum 	<ul style="list-style-type: none"> • UF Machined Aluminum • Zinc Plated Steel • Nylon 	<ul style="list-style-type: none"> • Nylon 	<ul style="list-style-type: none"> • Nylon • Spiral • Snap-In Cord/Spiral
Applications		<ul style="list-style-type: none"> • For applications with severe conditions – such as oil and gas, marine, food and chemical processing 			

Specialty & Custom Grips

Flexible hose systems are used throughout industry to transport fluids and gases under high pressure. Various strains on the hoses can occasionally cause them to fail catastrophically at the fitting, causing the broken hose to flail wildly and causing serious injury to nearby personnel and costly damage to adjacent equipment. Common failure modes can include rigid fatigue at the point where the hose and couplings meet, abnormal arc of bend, pressure peaks, impacts from vehicles or moving equipment, or just long-term wear and tear.

Kellems hose containment grips are designed to stop this hazard, suppressing the violent whipping action of a snapped high-pressure hose, holding it in place, allowing it to expend its dangerous kinetic energy in a controlled and safe manner.

Kellems hose containment grips are made of stainless steel double weave mesh construction for high strength and come complete with hose clamps. They are assembled onto the hose and securely anchored with the wire mesh exerting a radial compressive force along the hose surface. The pressure exerted increases automatically to supply the required holding action. If a hose failure occurs, the compressive force of the grip instantly increases and tightens, holding it harmlessly downward, and effectively preventing the hose from pulling loose and whipping dangerously.



Safety—Designed for flexible hose systems which transmit fluids and gases under pressure

Security—Hose containment grips are used to assist in preventing high pressure hoses from whipping violently in case of hose failure

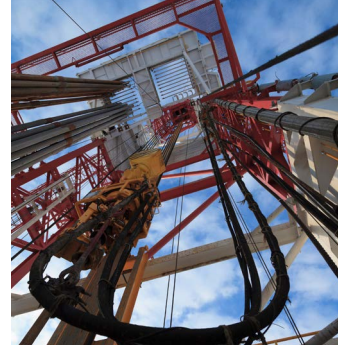
Reliability—Widely used by NASA and the Military along with general industry

Construction—Made of 302/304 Stainless Steel



Applications

Kellems® Hose Containment Grips are used on high pressure, flexible hose lines to prevent the hose from whipping violently in the event of hose failure at the fitting. These grips will prevent serious injury to personnel and damage to equipment by holding the hose in place in the event of hose failure.



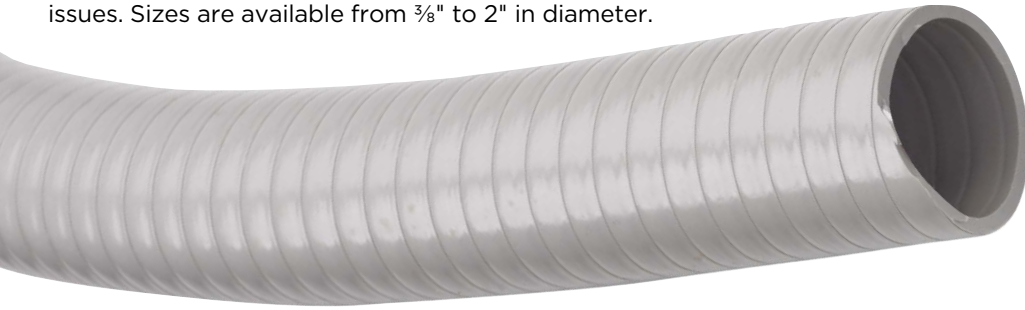
Type	Type A	Type E	Type U	Type F	Type T	Type Y
Features	<ul style="list-style-type: none"> From 3/8" Dia. to 3 1/2" Dia. single eye grips available in various lengths 	<ul style="list-style-type: none"> From 1/2" Dia. to 1 1/2" Dia. double eye grips available in various lengths 	<ul style="list-style-type: none"> From 1/4" Dia. to 2" Dia. universal bale grips available in various lengths 	<ul style="list-style-type: none"> For AN818 (-) 4 Thru (-) 24 "B" Nut Hose Fittings Hose Diameters 1/4" thru 2" 	<ul style="list-style-type: none"> From 1/2" Dia. to 2 1/4" Dia. tube grips available in various lengths 	<ul style="list-style-type: none"> From 1/4" Dia. to 3 1/2" Dia. double eye threaded studs available in various lengths
Applications	<ul style="list-style-type: none"> For full or partial containment of high pressure hoses, a full line of grips made of type 302/304 CRES 18-8 "stainless steel". Please consult factory to determine correct grip for your application. Engineering is available to custom design or modify per your needs. 					

Liquidtight Conduit & Fittings

Liquidtight tubing is designed to house and permanently protect underground cable from moisture, grit, rodents and other environmental hazards that can damage the cable over time.

The Kellems brands of liquidtight — PolyTuff® I conduit and PolyTuff® II tubing — feature non-metallic, PVC-based construction, avoiding the challenges of corrosion while providing high strength, superior flexibility and outstanding handleability. When compared to metals, they can be deployed in flexible directions, even accommodating tight turns. They can be cut cleanly with no damaging jagged edges, and help avoid costly fatigue and section separation issues. Sizes are available from 3/8" to 2" in diameter.

Kellems liquidtight conduit pairs with nylon connectors that are completely non-conductive, corrosion resistant and easier to install than metallic liquidtight fittings. They feature a patented SwivelLok® design that eliminates the need for separate straight, 45-degree and 90-degree fittings by providing a full range in one device. In addition, these Kellems non-metallic connectors have a unique design which allows UL 50 ratings of 3R, 4X, 12 and 13.



PVC Conduit—Rigid PVC core bonded to flexible PVC jacket, approved for outdoor use and direct burial

PVC Tubing—PVC core with corrugated walls bonded to PVC jacket

Fittings—Metallic and non-metallic straight, 45 and 90 degree fittings

SwivelLok®—Multi-position fitting for an all-in-one application



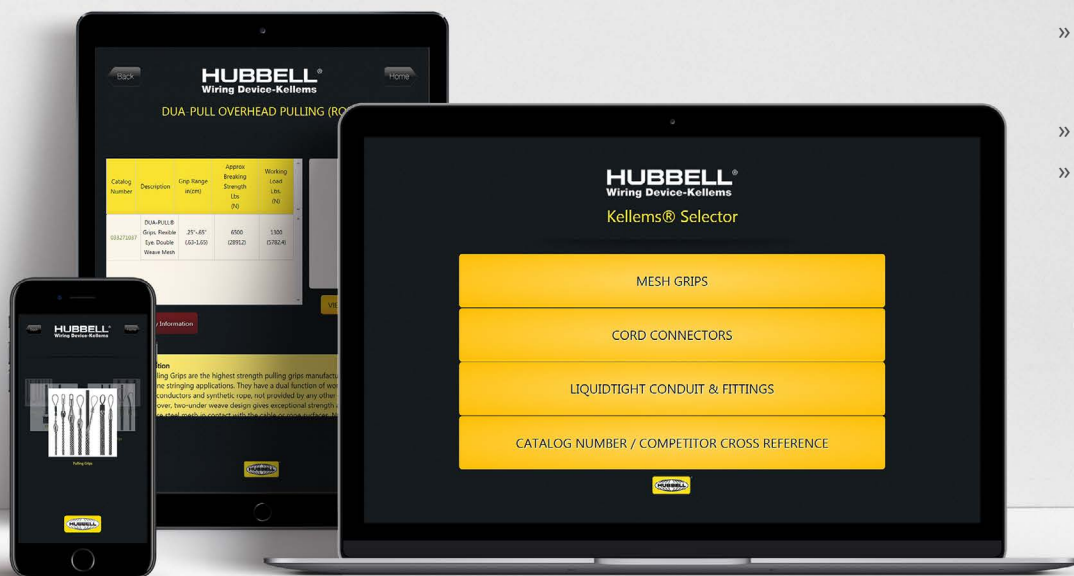
Applications

Multiple applications used by, but not limited to the marine craft, aquatic, pond, spa, electrical conduit, agricultural, recreational vehicle, and industrial sectors.



Type	Conduit	Tubing	SwivelLok®	Straight	Angled
Features	<ul style="list-style-type: none"> • Rigid PVC core bonded to flexible • PVC jacket • Approved for outdoor use and direct burial • UL Listed and CSA Certified 	<ul style="list-style-type: none"> • PVC core with corrugated walls bonded to PVC jacket • Handles twists, turns, bends, switchbacks and straightaways with ease • UL Recognized and CSA Certified 	<ul style="list-style-type: none"> • 3/8" to 1" Non-metallic weatherproof fitting that can be transformed into a straight, 45 degree, and 90 degree fitting 	<ul style="list-style-type: none"> • 3/8" to 4" Straight metallic or non-metallic weatherproof fitting 	<ul style="list-style-type: none"> • 3/8" to 1 1/4" 45 or 90 degree metallic or non-metallic weatherproof fitting
Applications	<ul style="list-style-type: none"> • PVC conduit is often used in underground and wet location applications. • Demanding wet and corrosive environments, including power generation, petrochemical, paper mills, food, beverage, pharmaceutical plants and anywhere high performance is required. 				

Use the **Kellems® App** from Hubbell



- » Quickly identify and choose Kellems® grips, cord connectors and liquid-tight devices
- » View related products
- » Access spec sheets and detailed product information.*

*Active internet connection required.

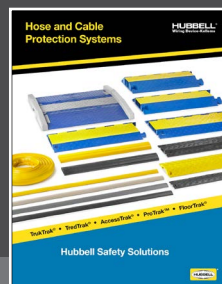
Try it today



Hubbell Product Literature



Safety Product Guide



Hose & Cable Protection Systems



Cord Reels

HUBBELL®
Wiring Device-Kellems

www.hubbell.com/wiringdevice-kellems/en

