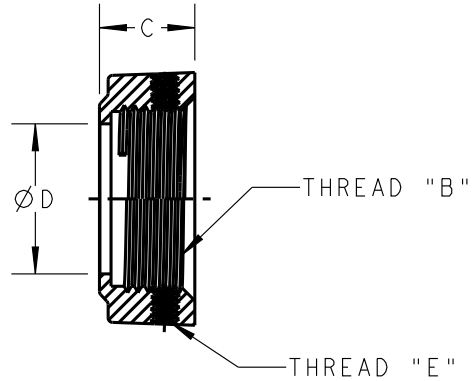
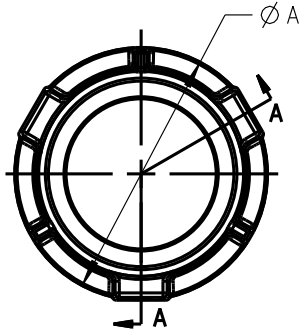




# Steel City



SECTION A-A

MATERIAL: SEE TABLE  
FINISH: ZINC PLATED

T&B CAT NO.	Ø A [ IN ]	B NPSM THREAD	C [ IN ]	Ø D [ IN ]	E UNC THREAD	MATERIAL
BU 401	1.13	1/2" - 14	.56	.612±.010	#10-24	MALLEABLE IRON
BU 402	1.40	3/4" - 14	.56	.814±.010	#10-24	MALLEABLE IRON
BU 403	1.75	1" - 11 1/2	.66	1.039±.010	#10-24	MALLEABLE IRON
BU 404	2.12	1 1/4" - 11 1/2	.66	1.360±.020	#10-24	MALLEABLE IRON
BU 405	2.34	1 1/2" - 11 1/2	.72	1.590±.020	#10-24	MALLEABLE IRON
BU 406	2.73	2" - 11 1/2	.72	2.047±.020	#10-24	DUCTILE IRON
BU 407	3.25	2-1/2" - 8	.94	2.439±.030	1/4" - 20	DUCTILE IRON
BU 408	3.86	3" - 8	.94	3.038±.030	1/4" - 20	DUCTILE IRON
BU 409	4.38	3-1/2" - 8	.94	3.518±.030	1/4" - 20	DUCTILE IRON
BU 410	4.88	4" - 8	.94	3.996±.030	1/4" - 20	DUCTILE IRON

**GENERAL NOTES**

- ALL DIMENSIONS ARE FOR REFERENCE ONLY.
- DIMENSIONS IN BRACKETS [ ] ARE IN METRIC UNITS.

www.tnb.com

**Thomas & Betts**  
A Member of the ABB Group

DESCRIPTION:

**RIGID/IMC CONDUIT BUSHING**

**REVISIONS**

1 SEE ERN ( 2017740 )  
FOR APPROVAL SIGNATURES  
& RELEASE DATE.  
PROJECT NO: RM401892

ORIGINAL PROJECT NO / ( ERN NO )

117P000680 / ( 2016374 )

SHEET NO:

1 OF 1

REV. NO:

1

DRAWING NO:

WSD-001491