

Product End-of-Life Instructions

8501X Machine Tool Relays (AC)

Product Range

8501X Machine Tool Relays (AC)

Marketing Model

8501XO●●●, 8501XM●●●●, 8501XL●●●, 8501XT●●●, 8501XB●●●



Size in mm (H x L x D):

89 x 57 x 131

Weight in g:

Between 975 and 1356 without battery

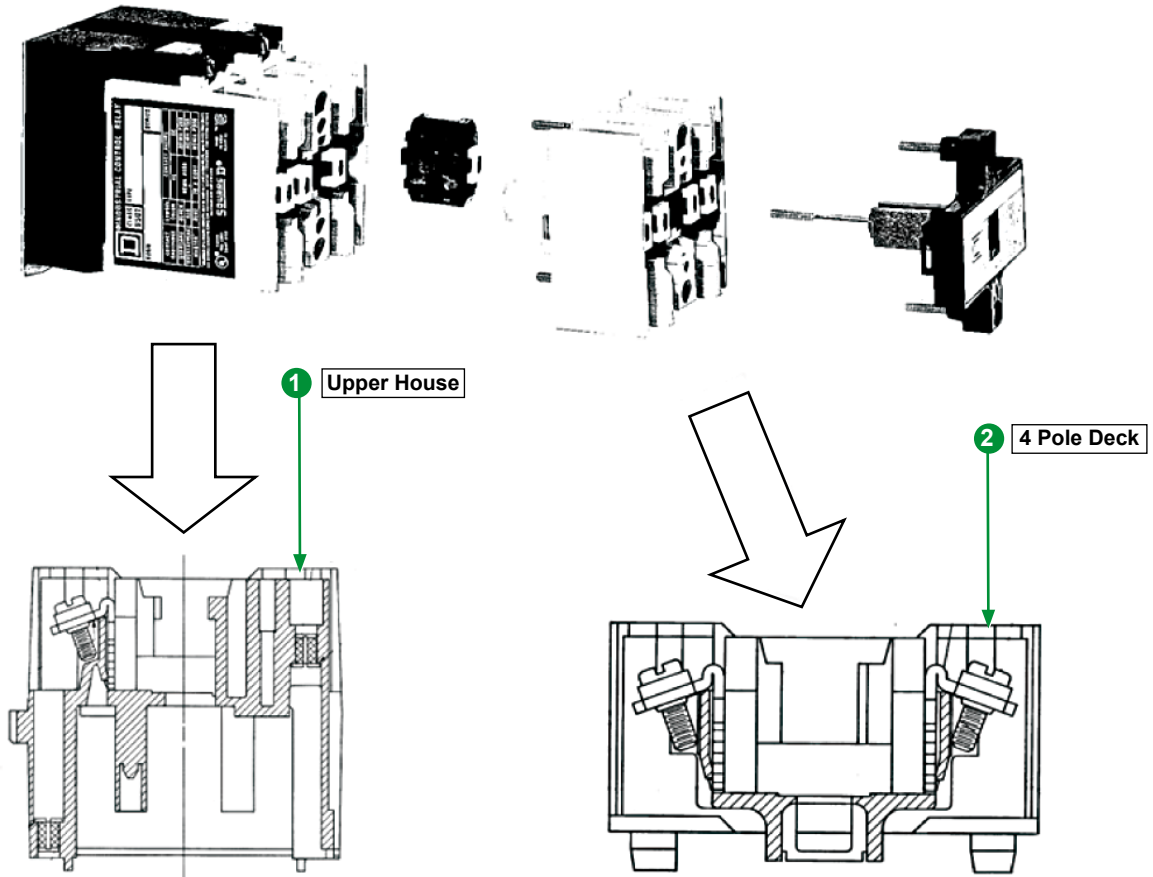


Operations recommended for the end of life treatment

There are several steps to process the products at the end of life so as to recover components, materials or energy :

Reuse ⇒ Separation for special treatment ⇒ Other Dismantling ⇒ Shredding

The components of the products that optimize the recycling performances are listed, identified and located hereunder.



Recommendation	Number on drawing	Components	Weight (g)	Comment
Special treatment	1	Upper House	105.4	1 Plastic part > <
	2	4 Pole Deck	58	1 Plastic part > PBT +PC + GF30 FR <

Schneider Electric Industries SAS

35, rue Joseph Monier
CS30323
F - 92506 Rueil Malmaison Cedex

RCS Nanterre 954 503 439
Capital social 896 313 776 €
www.schneider-electric.com

The version of the Guide used to create the document: End of Life Instruction Drafting Guide of Schneider Electric version V1.

Publication : Schneider Electric