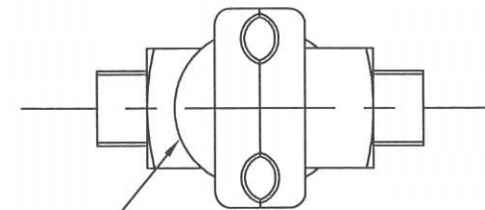
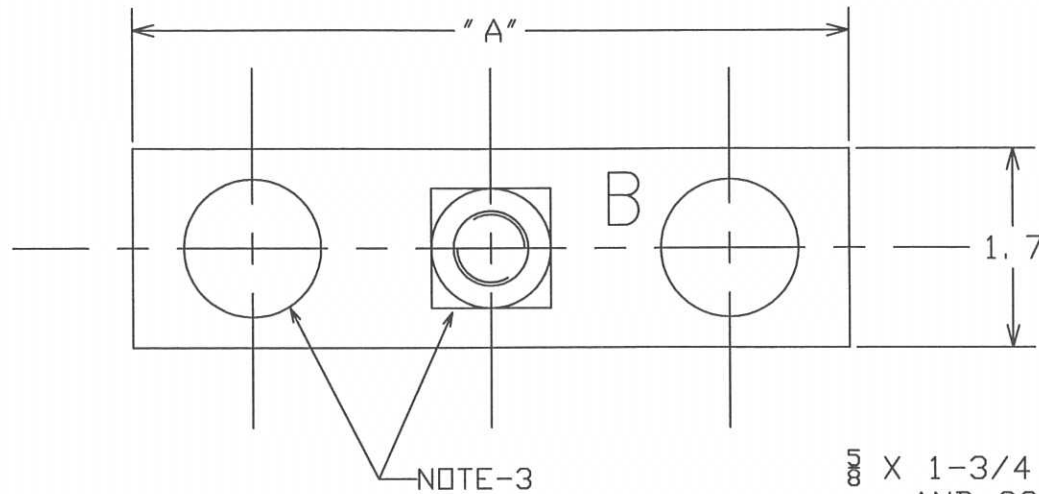


-NOTES-

1. MAT'L: H.R. STEEL, HOT DIP GALV. PER ASTM A153 (LATEST REV.)
2. ACCOMMODATES STRAND SIZES 5/16" TO 1/2".
3. WITH THE EXCEPTION OF CAT. NO. 6462 WHICH IS ASSEMBLED WITH BOLT HEADS ON THE SAME SIDE. ALTERNATE BOLTS ARE REVERSED.



3/8" X 1-3/4 CARR.  
AND SQ. NUT  
(3 PLACES)

ASSY NO.	DESCRIPTION	"A"
6461	GUY CLAMP	6.0
6462	GUY CLAMP	4.0

<b>CHANCE</b> TOLERANCE CHART		<b>HUBBELL POWER SYSTEMS</b> POWER SYSTEMS, INC.	
CONFIDENTIAL: THIS DRAWING AND ITS CONTENTS ARE CONFIDENTIAL AND THE EXCLUSIVE PROPERTY OF HUBBELL POWER SYSTEMS. NO PUBLICATION, DISTRIBUTION OR COPIES MAY BE MADE WITHOUT THE WRITTEN CONSENT OF HUBBELL POWER SYSTEMS. HUBBELL POWER SYSTEMS UNPUBLISHED. ALL RIGHTS RESERVED UNDER THE COPYRIGHT LAWS.			
TITLE <b>HEAVY TYPE GUY CLAMP</b>		SIZE DWG NO. SB SA6461	CAT / PART / ASSY NO. SEE CHART
DO NOT SCALE THIS DRAWING	DRN BY WILSON	DATE 05/20/11	REV --- SHEET 1 OF 1