

SCREW COVER WIRING TROUGH, NEMA TYPE 12



INDUSTRY STANDARDS

UL 870 Listed; File No. E27524

NEMA/EEMAC Type 12

JIC standards EGP-1-1967 and EMP-1-1967

CSA, File No. 42184: Type 12

IEC 60529, IP55

APPLICATION

This wiring trough meets basic functionality requirements for applications in which frequent access is not needed. Providing protection in moist or dirty environments, the trough can be customized with different finish colors and textures.

FEATURES

- Ends and seams continuously welded and ground smooth; no holes or knockouts
- Captivated cover screws thread into sealed wells
- Oil-resistant gasket and adhesive

SPECIFICATIONS

- 14 gauge steel covers and bodies
- F2212SC is 16 gauge steel

FINISH

ANSI 61 gray polyester powder finish inside and out over pretreated surfaces.

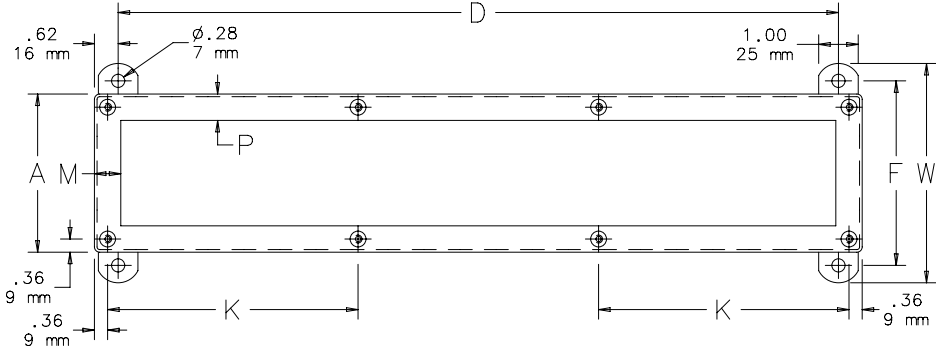
MODIFICATION AND CUSTOMIZATION

Hoffman excels at modifying and customizing products to your specifications. Contact your local Hoffman sales office or distributor for complete information.

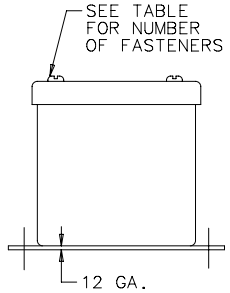
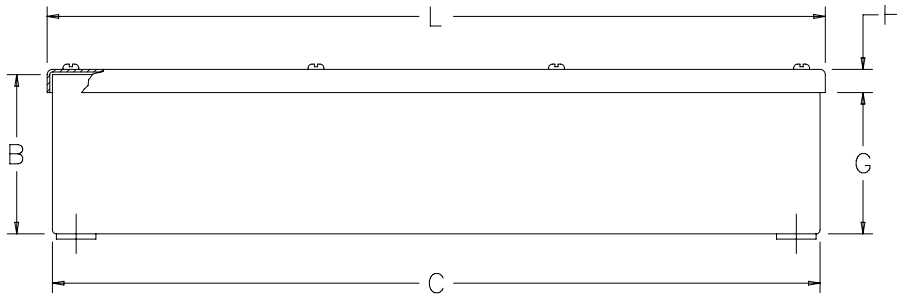
BULLETIN: F20SC

Standard Product

Catalog Number	AxBxC in./mm	Number of Fasteners	D in./mm	F in./mm	G in./mm	H in./mm	K in./mm	L in./mm	M in./mm	P in./mm	W in./mm
F2212SC	2.50 x 2.50 x 12.00	4	10.75	3.19	2.09	0.56	—	12.22	0.69	0.41	4.00
	64 x 64 x 305		273	81	53	14	—	310	18	10	102
F4412SC	4.00 x 4.00 x 12.00	4	10.75	4.69	3.59	0.58	—	12.25	0.69	0.69	5.50
	102 x 102 x 305		273	119	91	15	—	311	18	18	140
F4418SC	4.00 x 4.00 x 18.00	6	16.75	4.69	3.59	0.58	8.64	18.25	0.69	0.69	5.50
	102 x 102 x 457		425	119	91	15	219	464	18	18	140
F4424SC	4.00 x 4.00 x 24.00	6	22.75	4.69	3.59	0.58	11.64	24.25	0.69	0.69	5.50
	102 x 102 x 610		578	119	91	15	296	616	18	18	140
F4430SC	4.00 x 4.00 x 30.00	8	28.75	4.69	3.59	0.58	9.77	30.25	0.69	0.69	5.50
	102 x 102 x 762		730	119	91	15	248	768	18	18	140



TOP VIEW WITH COVER REMOVED



C2538-C