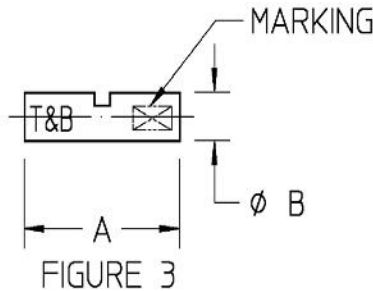
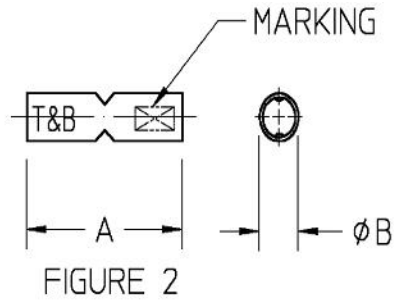
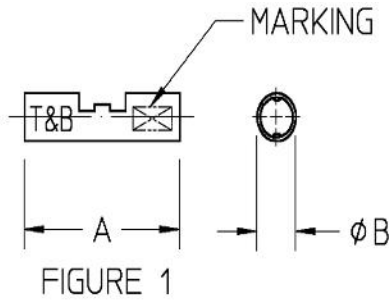




STAKON®



NOTES:

1. FOR NICKEL PLTE PER QQ-N-290, CLASS 2, TYPE IV, ADD SUFFIX "NP" TO CATALOG NO. EXAMPLE: AA2NP
2. CAT. NOS. AA2, BB2, & NO. 675-51973 COMPLY WITH BU SHIPS SPEC MIL-T-16366, TYPE CCBC.
3. FOR SILVER PLTE, ADD SUFFIX "SP" TO CAT. NO. EXAMPLE: BB2SP FOR #675-51973 SILVER PLTE ORDER #675-51973-1

MATERIAL: COPPER
FINISH: ELECTRO-TIN PLTE (SEE NOTES)

*STRANDED AND SOLID FOR 22-10 AWG COPPER WIRE
STRANDED FOR 9-1 AWG COPPER WIRE

CAT. NO.	DIST. CAT. NO.	FIG.	WIRE SIZE		±.015 A	±.010 B	MARKING	INSTALLING TOOLS		
			AWG*	NAVY				HAND TOOLS	FIXED DIE TOOLS	TBM6 WITH DIES
AA2	2A-18	1	22-16	1-2	.63	.13	A 22-16	WT110M, WT111M, WT112M, ERG2002, ERG2005(B&C ONLY), WT1300, WT2000, WT3155A(B&C ONLY)	-	-
BB2	2B-14	1	18-14	2-1/2 - 4	.63	.16	B 14-18			
CC2-TB	2C-10	1	12-10	-	.71	.22	C 10-12			
675-51973	-	1	12-9	6-9	.81	.23	NAVY 6-9			
DD102	2D-8	3	8-10	-	.99	.27	DD102	WT3155A	WT115A WT3175	11803 NEST 11802 INDENTOR
EE2	2E-6	3	6	-	1.12	.307	EE-2	-		11805 NEST 11802 INDENTOR
FF2	2F-4	3	4-3	-	1.12	.377	FF-2	-		11806 NEST 11802 INDENTOR
GG2	2G21	2	2-1	-	1.72	.47	GG-2	-		11802 INDENTOR

GENERAL NOTES

1. ALL DIMENSIONS ARE FOR REFERENCE ONLY.
2. DIMENSIONS IN BRACKETS [] ARE IN METRIC UNITS.

www.tnb.com

Thomas & Betts
A Member of the ABB Group

REVISIONS

** SEE ERN (****)
FOR APPROVAL SIGNATURES
& RELEASE DATE.
PROJECT NO: ****

DESCRIPTION:

STA-KON NON-INSULATED BUTT SPLICE

ORIGINAL PROJECT NO / (ERN NO)

TM400023 / (2016425)

SHEET NO:

1 OF 1

REV. NO:

0

DRAWING NO:

WSD-001494