

## Flush Service Floor Boxes

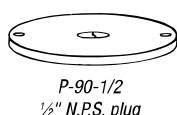
### Engineering Data (continued)



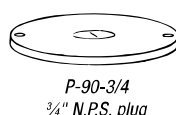
CAT. NO.	MAXIMUM CONDUIT TAPPING (IN.)		CONDUIT KOS (IN.)		COVERS AND CARPET PLATES	WIRING DEVICE
	W/BUSHING	W/O BUSHING	SIDES	BOTTOM		
78SC	¾	1	—	—	P90 series	Sing. short, Strap rec.
78-S	¾	1	—	—	P90 series	Sing. short, Strap rec.
88-D	—	—	(2) ½ (2) ¾	(3) ½ (2) ¾	P90 series	Sing. short Strap rec.
88-S	—	—	(2) ½ (2) ¾	(3) ½ (2) ¾	P90 series	Sing. short Strap rec.

### MopTite® Cover Plates for 78 and 88 Series

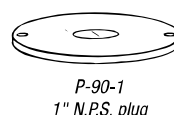
- Polished-brass finish
- Furnished complete with sealing gasket and 6-32 x ½" brass screws
- 2 ⅜" outside diameter
- For brushed aluminum, add AL after catalog number



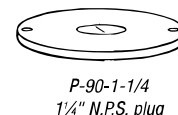
P-90-1/2  
½" N.P.S. plug



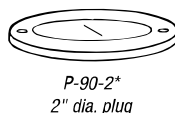
P-90-3/4  
¾" N.P.S. plug



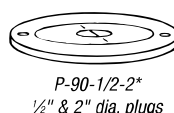
P-90-1  
1" N.P.S. plug



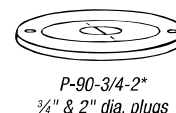
P-90-1-1/4  
1 ¼" N.P.S. plug



P-90-2\*  
2" dia. plug



P-90-1/2-2\*  
½" & 2" dia. plugs

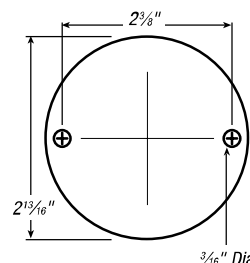


P-90-3/4-2\*  
¾" & 2" dia. plugs



CAT. NO.	DESCRIPTION	FINISH	STD. CTN.
P-90-1/2	Cover Plate ½" NPS Plug	Brass	4
P-90-3/4	Cover Plate ¾" NPS Plug	Brass	4
P-90-3/4-AL	Cover Plate ¾" NPS Plug	Aluminum	4
P-90-1	Cover Plate 1" NPS Plug	Brass	4
P-90-1-AL	Cover Plate 1" NPS Plug	Aluminum	4
P-90-1-1/4	Cover Plate 1 ¼" NPS Plug	Brass	4

CAT. NO.	DESCRIPTION	FINISH	STD. CTN.
P-90-1-1/4-AL	Cover Plate 1 ¼" NPS Plug	Aluminum	4
P-90-2	Cover Plate 2" UN Plug	Brass	4
P-90-2-AL	Cover Plate 2" UN Plug	Aluminum	4
P-90-1/2-2	Cover Plate ½" & 2" Plug	Brass	4
P-90-3/4-2	Cover Plate ¾" & 2" Plug	Brass	4
P-90-3/4-2-AL	Cover Plate ¾" & 2" Plug	Aluminum	4



New MopTite® Covers exceed UL watertight requirements for 514A, 514C.

\*Also includes steel seating plates for receptacles.

For above-floor service fittings for 78, 88 and 98 series floor boxes, see **page A-170**

### Accessories for 78 and 88 Series Floor Boxes

- Extends vertical adjusting ring 1 ½"
- Seven cubic inch capacity
- 15-Amp, 125-Volt, NEMA grounding type
- Mounted on steel seating plate
- For use with 2" diameter-opening floor plate



478-G-12



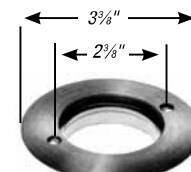
8805-E



CAT. NO.	DESCRIPTION	STD. CTN.
8805-E	Extension Adjusting Ring	4
478-G-12	15-Amp 125-Volt NEMA Grounding Receptacle	4

### Carpet Plate for 78 and 88 Series Floor Boxes

- Polished-brass finish
- Furnished complete with 6-32 x 1" brass flathead screws and gasket
- Threaded 2-20UN-2B to accept 694 plug
- 3 ⅝" O.D. with ⅝" flange
- For brushed aluminum, add AL after catalog number



P-90-CP



CAT. NO.	DESCRIPTION	FINISH	STD. CTN.
P-90-CP	Carpet Plate	Brass	4
P-90-CP-AL	Carpet Plate	Aluminum	4

Will not accept P90 covers. Will accept 694 threaded plug.