

Rigid/intermediate grade conduit fittings

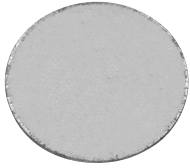
Bushing pennies & nailing straps

Rigid fittings

BUSHING PENNIES – STEEL

Applications:

- A penny under a bushing will seal the end of conduit during construction



90, 93, 94, 95, 97, 98



91, 92, 96, 99

Cat. #	Size	Unit qty.	Wt. lbs. per 100
90	1/2"	100	1
91	3/4"	100	1
92	1"	100	1
93	1 1/4"	50	1
94	1 1/2"	50	2
95	2"	50	3
96	2 1/2"	50	5
97	3"	50	7
98	3 1/2"	50	10
99	4"	50	14

NAILING STRAPS – CAST STEEL

Standard material:

- Cast steel

Standard finish:

- Zinc plated

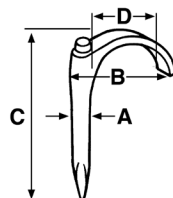
Support rigid conduit and IMC to mounting surface



Cat. #	Conduit sizes		Unit qty.	Wt. lbs. per 100	Load rating
	EMT	Rigid			
NS 1	1/2"	3/8"	100	2	25lb.
NS 2	3/4"	1/2"	100	2	30lb.
NS 3	1"	3/4"	100	3	40lb.

Dimensions (in inches):

Cat. #	A	B	C	D
NS 1	3/16	1	1 7/8	3/4
NS 2	3/4	1 1/4	2	15/16
NS 3	3/16	1 1/2	2 1/2	1 1/8



NAILING STRAPS – STAMPED STEEL

Applications:

- To secure rigid/IMC conduit

Certifications and compliances:

- UL File No. E-184283

Standard material:

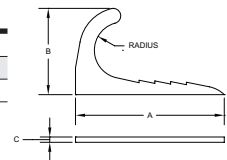
- Pre-galvanized stamped steel



Cat. #	Conduit sizes		Unit qty.	Wt. lbs. per 100
	EMT	Rigid		
NSS1	1/2"	3/8"	100	2
NSS2	3/4"	1/2"	100	2
NSS3	1"	3/4"	100	3

Dimensions (in inches):

Cat. #	A	B	C	Radius
NSS1	2.100	1.040	0.080	0.350
NSS2	2.300	1.275	0.080	0.460
NSS3	2.200	1.500	0.080	0.580



Rigid/intermediate grade conduit fittings

Conduit u-bolts & sealing locknuts

Rigid fittings

HEAVY DUTY CONDUIT U-BOLTS WITH HEX NUTS – ELECTROGALVANIZED IRON



Cat. #	Size	Thread size	Unit. qty.	Wt. lbs. per 100
UBM50HD	1/2"	5/16" - 18	200	12
UBM75HD	3/8"	5/16" - 18	200	14
UBM100HD	1"	5/16" - 18	100	17
UBM125HD	1 1/4"	5/16" - 18	50	19
UBM150HD	1 1/2"	5/16" - 18	50	21
UBM200HD	2"	3/8" - 16	50	28
UBM250HD	2 1/2"	3/8" - 16	25	37
UBM300HD	3"	3/8" - 16	25	42
UBM350HD	3 1/2"	3/8" - 16	20	46
UBM400HD	4"	3/8" - 16	20	51

SEALING LOCKNUTS

Applications:

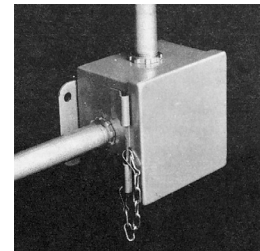
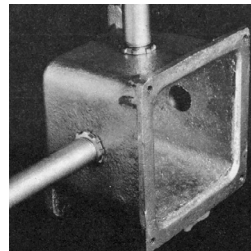
Only one sealing locknut is required to:

- Functionally replace rigid threaded enclosure connectors
- Provide raintight, watertight or oiltight seal in any position
- Provide positive ground connection
- Provide economies in installation and fitting costs

Features:

- Integrally fused PVC gasket provides positive seal against water, oils and other liquids
- Designed for use with raintight, watertight and oiltight enclosures, NEMA 2, 3, 3R, 4 and 12
- UL Listed raintight
- UL Listed liquidtight
- Can be used with either sheet metal or standard cast metal boxes
- 1/2" to 2" heavy duty steel
- 2 1/2" to 6" malleable iron

UL File No. E-19189



Cat. #	Size	Unit qty.	Wt. lbs. per 100
SL1	1/2"	100	1
SL2	3/4"	50	2
SL3	1"	25	4
SL4	1 1/4"	25	4
SL5	1 1/2"	25	5
SL6	2"	25	8
SL7	2 1/2"	10	28
SL8	3"	10	38
SL9	3 1/2"	10	46
SL10	4"	5	52
SL11	5"	2	125
SL12	6"	1	140

Rigid/intermediate grade conduit fittings

Conduit locknuts

CONDUIT LOCKNUTS

$\frac{3}{8}$ " - 2" steel, $2\frac{1}{2}$ " - 6" malleable iron

UL File No. E-19189



10



11-23



Cat. #	Size	Unit qty.	Wt. lbs. per 100
10	$\frac{3}{8}$ "	100	1
11	$\frac{1}{2}$ "	100	1
12	$\frac{3}{4}$ "	100	2
13	1"	50	3
14	$1\frac{1}{4}$ "	100	4
15	$1\frac{1}{2}$ "	50	5
16	2"	50	7
17	$2\frac{1}{2}$ "	20	10
18	3"	10	15
19	$3\frac{1}{2}$ "	10	18
20	4"	5	22
22	5"	2	79
23	6"	1	166

THIN CONSTRUCTION LOCKNUTS – STEEL



Cat. #	Size	Unit qty.	Wt. lbs. per 100
11X	$\frac{1}{2}$ "	500	1
12X	$\frac{3}{4}$ "	100	1
13X	1"	50	3
14X	$1\frac{1}{4}$ "	100	3
15X	$1\frac{1}{2}$ "	50	4
16X	2"	50	4
17X	$2\frac{1}{2}$ "	25	10
18X	3"	20	15
19X	$3\frac{1}{2}$ "	10	18
20X	4"	10	22

CONDUIT LOCKNUTS – ALUMINUM



Cat. #	Size	Unit qty.	Wt. lbs. per 100
11 SA	$\frac{1}{2}$ "	100	1
12 SA	$\frac{3}{4}$ "	100	1
13 SA	1"	50	1
14 SA	$1\frac{1}{4}$ "	100	2
15 SA	$1\frac{1}{2}$ "	50	2
16 SA	2"	50	3
17 SA	$2\frac{1}{2}$ "	20	9
18 SA	3"	10	13
19 SA	$3\frac{1}{2}$ "	10	16
20 SA	4"	5	52

CONDUIT LOCKNUTS – ZINC DIE CAST



Cat. #	Size	Unit qty.	Wt. lbs. per 100
11DC	$\frac{1}{2}$ "	400	1
12DC	$\frac{3}{4}$ "	250	1
13DC	1"	100	2
14DC	$1\frac{1}{4}$ "	60	3
15DC	$1\frac{1}{2}$ "	50	5
16DC	2"	30	8
17DC	$2\frac{1}{2}$ "	20	10
18DC	3"	15	15
19DC	$3\frac{1}{2}$ "	10	16
20DC	4"	10	19

BONDING LOCKNUTS – STEEL

Applications:

- For use with bushing to bond $\frac{1}{2}$ " to 4" rigid conduit to boxes, cabinets or other enclosures, only where a locknut is exposed.

UL File No. E-6225



Cat. #	Size	Unit qty.	Wt. lbs. per 100
GL 11	$\frac{1}{2}$ "	100	2
GL 12	$\frac{3}{4}$ "	50	3
GL 13	1"	50	4
GL 14	$1\frac{1}{4}$ "	50	6
GL 15	$1\frac{1}{2}$ "	50	7
GL 16	2"	25	9
GL 17	$2\frac{1}{2}$ "	20	28
GL 18	3"	10	38
GL 19	$3\frac{1}{2}$ "	10	48
GL 20	4"	5	52

SELF-RETAINING PVC GASKET WITH STEEL RING

UL File No. E-22133



Cat. #	Size	Unit qty.	Wt. lbs. per 100
SG1	$\frac{3}{8}$ " - $\frac{1}{2}$ "	100	1
SG2	$\frac{3}{4}$ "	50	2
SG3	1"	50	2
SG4	$1\frac{1}{4}$ "	25	2
SG5	$1\frac{1}{2}$ "	25	4
SG6	2"	25	3
SG7	$2\frac{1}{2}$ "	10	5
SG8	3"	10	10
SG9	$3\frac{1}{2}$ "	10	12
SG10	4"	10	10
SG11	5"	5	15
SG12	6"	5	22

Rigid/intermediate grade conduit fittings

Galvanized rigid conduit nipples

GALVANIZED RIGID CONDUIT NIPPLES – STEEL

Applications:

- For use with rigid and IMC conduit to join two enclosures or conduit bodies together

Features:

- Designed for use with threaded rigid conduit
- NPT threads with end cap on each end



Certifications and compliances:

- cULus Listed
- Galvanized rigid nipples meet UL6 and ANSI C80.1
- UL File No. E-25501



Cat. #	Size & length	Unit qty.	Wt. lbs. per 100
NPL50CL	1/2" x CLOSE	25	5
NPL50150	1/2" x 1 1/2"	25	8
NPL50200	1/2" x 2"	25	10
NPL50250	1/2" x 2 1/2"	25	14
NPL50300	1/2" x 3"	25	18
NPL50350	1/2" x 3 1/2"	25	22
NPL50400	1/2" x 4"	25	24
NPL50500	1/2" x 5"	25	30
NPL50600	1/2" x 6"	25	40
NPL50800	1/2" x 8"	25	51
NPL501000	1/2" x 10"	25	68
NPL501200	1/2" x 12"	25	80
NPL75CL	3/4" x CLOSE	25	8
NPL75150	3/4" x 1 1/2"	25	9
NPL75200	3/4" x 2"	25	13
NPL75250	3/4" x 2 1/2"	25	19
NPL75300	3/4" x 3"	25	23
NPL75350	3/4" x 3 1/2"	25	28
NPL75400	3/4" x 4"	25	33
NPL75500	3/4" x 5"	25	40
NPL75600	3/4" x 6"	25	50
NPL75800	3/4" x 8"	25	73
NPL751000	3/4" x 10"	25	84
NPL751200	3/4" x 12"	25	108
NPL100CL	1" x CLOSE	25	16
NPL100200	1" x 2"	25	20
NPL100250	1" x 2 1/2"	25	27
NPL100300	1" x 3"	25	34
NPL100350	1" x 3 1/2"	25	41
NPL100400	1" x 4"	25	47
NPL100500	1" x 5"	25	63
NPL100600	1" x 6"	25	75
NPL100800	1" x 8"	25	109
NPL1001000	1" x 10"	25	138
NPL1001200	1" x 12"	25	147
NPL125CL	1 1/4" x CLOSE	25	19
NPL125200	1 1/4" x 2"	25	25
NPL125250	1 1/4" x 2 1/2"	25	34
NPL125300	1 1/4" x 3"	25	44
NPL125350	1 1/4" x 3 1/2"	25	55
NPL125400	1 1/4" x 4"	25	62
NPL125500	1 1/4" x 5"	25	80
NPL125600	1 1/4" x 6"	25	100
NPL125800	1 1/4" x 8"	25	136
NPL1251000	1 1/4" x 10"	25	182
NPL1251200	1 1/4" x 12"	25	197
NPL150CL	1 1/2" x CLOSE	25	24
NPL150200	1 1/2" x 2"	25	28
NPL150250	1 1/2" x 2 1/2"	25	36
NPL150300	1 1/2" x 3"	25	48
NPL150350	1 1/2" x 3 1/2"	25	68
NPL150400	1 1/2" x 4"	25	77
NPL150500	1 1/2" x 5"	25	97
NPL150600	1 1/2" x 6"	25	113
NPL150800	1 1/2" x 8"	25	153

Cat. #	Size & length	Unit qty.	Wt. lbs. per 100
NPL1501000	1 1/2" x 10"	25	194
NPL1501200	1 1/2" x 12"	25	260
NPL200CL	2" x CLOSE	25	38
NPL200250	2" x 2 1/2"	25	59
NPL200300	2" x 3"	25	62
NPL200350	2" x 3 1/2"	25	88
NPL200400	2" x 4"	25	90
NPL200500	2" x 5"	25	132
NPL200600	2" x 6"	25	146
NPL200800	2" x 8"	20	220
NPL2001000	2" x 10"	15	285
NPL2001200	2" x 12"	15	302
NPL250CL	2 1/2" x CLOSE	25	84
NPL250300	2 1/2" x 3"	25	100
NPL250350	2 1/2" x 3 1/2"	25	120
NPL250400	2 1/2" x 4"	25	150
NPL250500	2 1/2" x 5"	20	197
NPL250600	2 1/2" x 6"	20	240
NPL250800	2 1/2" x 8"	10	329
NPL2501000	2 1/2" x 10"	10	422
NPL2501200	2 1/2" x 12"	10	505
NPL300CL	3" x CLOSE	20	118
NPL300300	3" x 3"	20	130
NPL300350	3" x 3 1/2"	15	157
NPL300400	3" x 4"	15	200
NPL300500	3" x 5"	15	260
NPL300600	3" x 6"	10	300
NPL300800	3" x 8"	7	411
NPL3001000	3" x 10"	5	528
NPL3001200	3" x 12"	5	630
NPL350CL	3 1/2" x CLOSE	20	160
NPL350350	3 1/2" x 3 1/2"	15	175
NPL350400	3 1/2" x 4"	12	240
NPL350500	3 1/2" x 5"	12	320
NPL350600	3 1/2" x 6"	10	373
NPL350800	3 1/2" x 8"	6	510
NPL3501000	3 1/2" x 10"	5	655
NPL3501200	3 1/2" x 12"	5	785
NPL400CL	4" x CLOSE	20	180
NPL400400	4" x 4"	15	285
NPL400500	4" x 5"	12	380
NPL400600	4" x 6"	10	440
NPL400800	4" x 8"	6	600
NPL4001000	4" x 10"	5	775
NPL4001200	4" x 12"	5	925
NPL500CL	5" x CLOSE	1	240
NPL500500	5" x 5"	1	480
NPL500600	5" x 6"	1	600
NPL500800	5" x 8"	1	825
NPL5001000	5" x 10"	1	1055
NPL5001200	5" x 12"	1	1260
NPL600CL	6" x CLOSE	1	350
NPL600500	6" x 5"	1	660
NPL600600	6" x 6"	1	820
NPL600800	6" x 8"	1	1040
NPL6001000	6" x 10"	1	1440
NPL6001200	6" x 12"	1	1720

Rigid/intermediate grade conduit fittings

Rigid conduit nipples

RIGID CONDUIT NIPPLES – ALUMINUM

Applications:

- For use with rigid and IMC conduit to join two enclosures or conduit bodies together

Features:

- Can be used in both indoor and outdoor applications, offering customer increased flexibility
- Can be used in hazardous and non-hazardous locations
- Available from close to 12" to suit customer application
- NPT threads



Certifications and compliances:

- UL File No. E-324286



Cat. #	Size & length	Unit qty.	Wt. lbs. per 100
NPL50CLSA	1/2" x CLOSE	25	2
NPL50150SA	1/2" x 1 1/2"	25	3
NPL50200SA	1/2" x 2"	25	4
NPL50250SA	1/2" x 2 1/2"	25	5
NPL50300SA	1/2" x 3"	25	7
NPL50350SA	1/2" x 3 1/2"	25	8
NPL50400SA	1/2" x 4"	25	9
NPL50500SA	1/2" x 5"	25	12
NPL50600SA	1/2" x 6"	25	14
NPL50800SA	1/2" x 8"	25	19
NPL501000SA	1/2" x 10"	25	24
NPL501200SA	1/2" x 12"	25	29
NPL75CLSA	3/4" x CLOSE	25	3
NPL75150SA	3/4" x 1 1/2"	25	3
NPL75200SA	3/4" x 2"	25	5
NPL75250SA	3/4" x 2 1/2"	25	7
NPL75300SA	3/4" x 3"	25	8
NPL75350SA	3/4" x 3 1/2"	25	10
NPL75400SA	3/4" x 4"	25	12
NPL75500SA	3/4" x 5"	25	15
NPL75600SA	3/4" x 6"	25	18
NPL75800SA	3/4" x 8"	25	25
NPL751000SA	3/4" x 10"	25	31
NPL751200SA	3/4" x 12"	25	38
NPL100CLSA	1" x CLOSE	25	4
NPL100200SA	1" x 2"	25	7
NPL100250SA	1" x 2 1/2"	25	8
NPL100300SA	1" x 3"	25	12
NPL100350SA	1" x 3 1/2"	25	14
NPL100400SA	1" x 4"	25	16
NPL100500SA	1" x 5"	25	21
NPL100600SA	1" x 6"	25	26
NPL100800SA	1" x 8"	25	36
NPL1001000SA	1" x 10"	25	45
NPL1001200SA	1" x 12"	25	55
NPL125CLSA	1 1/4" x CLOSE	25	7
NPL125200SA	1 1/4" x 2"	25	10
NPL125250SA	1 1/4" x 2 1/2"	25	13
NPL125300SA	1 1/4" x 3"	25	16
NPL125350SA	1 1/4" x 3 1/2"	25	20
NPL125400SA	1 1/4" x 4"	25	23
NPL125500SA	1 1/4" x 5"	25	29
NPL125600SA	1 1/4" x 6"	25	36
NPL125800SA	1 1/4" x 8"	25	49
NPL1251000SA	1 1/4" x 10"	25	62
NPL1251200SA	1 1/4" x 12"	25	75
NPL150CLSA	1 1/2" x CLOSE	25	10
NPL150200SA	1 1/2" x 2"	25	12
NPL150250SA	1 1/2" x 2 1/2"	25	16
NPL150300SA	1 1/2" x 3"	25	20
NPL150350SA	1 1/2" x 3 1/2"	25	24
NPL150400SA	1 1/2" x 4"	25	28
NPL150500SA	1 1/2" x 5"	25	36
NPL150600SA	1 1/2" x 6"	25	44
NPL150800SA	1 1/2" x 8"	10	59

Cat. #	Size & length	Unit qty.	Wt. lbs. per 100
NPL1501000SA	1 1/2" x 10"	10	74
NPL1501200SA	1 1/2" x 12"	10	90
NPL200CLSA	2" x CLOSE	25	16
NPL200250SA	2" x 2 1/2"	25	22
NPL200300SA	2" x 3"	25	27
NPL200350SA	2" x 3 1/2"	25	32
NPL200400SA	2" x 4"	25	38
NPL200500SA	2" x 5"	25	48
NPL200600SA	2" x 6"	25	58
NPL200800SA	2" x 8"	10	78
NPL2001000SA	2" x 10"	10	100
NPL2001200SA	2" x 12"	10	120
NPL250CLSA	2 1/2" x CLOSE	12	22
NPL250300SA	2 1/2" x 3"	12	30
NPL250350SA	2 1/2" x 3 1/2"	12	39
NPL250400SA	2 1/2" x 4"	12	47
NPL250500SA	2 1/2" x 5"	12	64
NPL250600SA	2 1/2" x 6"	10	80
NPL250800SA	2 1/2" x 8"	5	774
NPL2501000SA	2 1/2" x 10"	5	148
NPL2501200SA	2 1/2" x 12"	5	180
NPL300CLSA	3" x CLOSE	12	24
NPL300300SA	3" x 3"	12	42
NPL300350SA	3" x 3 1/2"	12	53
NPL300400SA	3" x 4"	12	64
NPL300500SA	3" x 5"	12	86
NPL300600SA	3" x 6"	10	108
NPL300800SA	3" x 8"	5	152
NPL3001000SA	3" x 10"	5	196
NPL3001200SA	3" x 12"	5	240
NPL350CLSA	3 1/2" x CLOSE	12	42
NPL350350SA	3 1/2" x 3 1/2"	12	65
NPL350400SA	3 1/2" x 4"	12	75
NPL350500SA	3 1/2" x 5"	12	101
NPL350600SA	3 1/2" x 6"	5	128
NPL350800SA	3 1/2" x 8"	5	180
NPL3501000SA	3 1/2" x 10"	4	234
NPL3501200SA	3 1/2" x 12"	4	286
NPL400CLSA	4" x CLOSE	12	51
NPL400400SA	4" x 4"	12	87
NPL400500SA	4" x 5"	12	118
NPL400600SA	4" x 6"	5	149
NPL400800SA	4" x 8"	3	212
NPL4001000SA	4" x 10"	4	274
NPL4001200SA	4" x 12"	4	336
NPL500CLSA	5" x CLOSE	1	17
NPL500500SA	5" x 5"	1	155
NPL500600SA	5" x 6"	1	197
NPL500800SA	5" x 8"	1	281
NPL5001000SA	5" x 10"	1	366
NPL5001200SA	5" x 12"	1	450
NPL600CLSA	6" x CLOSE	1	105
NPL600500SA	6" x 5"	1	208
NPL600600SA	6" x 6"	1	342
NPL600800SA	6" x 8"	1	372
NPL6001000SA	6" x 10"	1	481
NPL6001200SA	6" x 12"	1	591

Rigid/intermediate grade conduit fittings

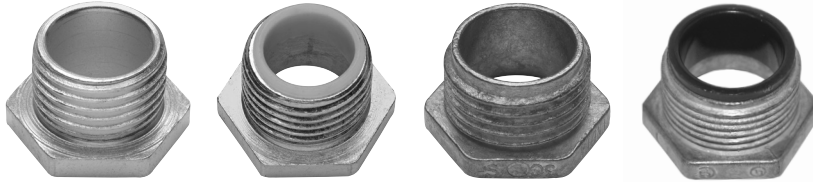
Conduit bushed (chase) nipples, offset conduit nipples
Push plugs

Rigid fittings

CONDUIT BUSHED (CHASE) NIPPLES – MALLEABLE IRON & ZINC DIE CAST

Non-insulated and insulated threaded NPSM for rigid conduit and IMC

UL File No. E-19189



Applications:

- Used with a locknut to connect two boxes side by side or back to back
- Used with a locknut to connect fixture housing to continuous runs

Cat. # Non-insulated malleable iron	Cat. # Insulated malleable iron	Cat. # Non-insulated zinc die cast	Cat. # Insulated zinc die cast	Size	Unit qty.	Wt. lbs. per 100 Non-insulated malleable iron	Wt. lbs. per 100 Insulated malleable iron	Wt. lbs. per 100 Non-insulated zinc die cast
50		50D	1050DC	1/2"	50	3	3	4
51	1051	51D	1051DC	3/4"	25	8	4	5
52	1052	52D	1052DC	1"	10	13	11	10
53	1053	53D	1053DC	1 1/4"	10	19	19	11
54	1054	54D	1054DC	1 1/2"	10	30	30	20
55	1055	55D	1055DC	2"	10	37	37	30
56	1056	56D	1056DC	2 1/2"	5	68	72	40
57	1057	57D	1057DC	3"	5	92	96	49
58	1058	58D	1058DC	3 1/2"	1	130	113	68
59	1059	59D	1059DC	4"	1	200	187	70
60	1060			5"	1	350	350	
61	1061			6"	1	425	450	

- Steel.
- Not UL Listed.
- cUL Listed for malleable iron versions.

OFFSET CONDUIT NIPPLES – ZINC DIE CAST

Features:

- Threaded NPSM for rigid conduit and IMC
- Used to offset the axis of raceways 3/4 of an inch

UL File No. E-19189



Cat. # Zinc die cast	Size	Unit qty.	Wt. lbs. per 100
300DC	1/2"	25	24
301DC	3/4"	25	34
302DC	1"	10	49
303DC	1 1/4"	10	54
304DC	1 1/2"	5	40
305DC	2"	2	60

PUSH PLUGS – PLASTIC

Applications:

- Used to plug knockouts on enclosures to prevent moisture, dust and debris from entering the enclosure during shipment or install
- Plugs are wider than size listed to ensure secure connection in enclosure
- Temperature rating: 180°F to 200°F
- Tensile strength: 600-2300 PSI



Cat. #	Size	Unit qty.	Wt. lbs. per 100
PPC 50	1/2"	100	1
PPC 75	3/4"	100	1
PPC 100	1"	50	1
PPC 125	1 1/4"	50	1
PPC 150	1 1/2"	25	1
PPC 200	2"	25	1
PPC 250	2 1/2"	100	2
PPC 300	3"	100	3
PPC 350	3 1/2"	50	6
PPC 400	4"	50	8

Rigid/intermediate grade conduit fittings

Snap-in blanks, reducing washers, concrete slab inserts

KNOCKOUT SNAP-IN BLANKS – STEEL

Applications:

- Used to plug knockouts in steel boxes
- Snap-in blanks press firmly into knockout, providing a secure connection



Cat. #	Size	Unit qty.	Wt. lbs. per 100
335	1/2"	100	2
336	3/4"	100	2
337	1"	50	2
338	1 1/4"	50	3
339	1 1/2"	50	5
340	2"	20	7

KNOCKOUT REDUCING WASHERS – STEEL

Applications:

- Used with steel boxes to reduce the knockout size
- Reducing washers press firmly into knockout, providing a secure connection

UL File No. E-23223



Cat. #	Size	Unit qty.	Wt. lbs. per 100
342	3/4" - 1/2"	100	1
343	1" - 1/2"	100	2
344	1" - 3/4"	100	2
345	1 1/4" - 1/2"	100	3
346	1 1/4" - 3/4"	100	2
347	1 1/4" - 1"	100	2
348	1 1/2" - 1/2"	50	5
349	1 1/2" - 3/4"	50	4
350S	1 1/2" - 1"	50	4
351	1 1/2" - 1 1/4"	50	3
352	2" - 1/2"	50	7
353	2" - 3/4"	50	7
354	2" - 1"	50	6
355	2" - 1 1/4"	50	5
356	2" - 1 1/2"	50	3
360	2 1/2" - 1/2"	25	7
361	2 1/2" - 3/4"	25	7
362	2 1/2" - 1"	25	7
363	2 1/2" - 1 1/4"	25	7
364	2 1/2" - 1 1/2"	25	7
365	2 1/2" - 2"	25	7
366	3" - 1"	25	14
367	3" - 1 1/4"	25	14
368	3" - 1 1/2"	25	14
369	3" - 2"	25	14
370 S	3" - 2 1/2"	25	14
371 Ⓞ	3 1/2" - 1 1/2"	25	25
372 Ⓞ	3 1/2" - 2"	25	25
373 Ⓞ	3 1/2" - 2 1/2"	25	25
374 Ⓞ	3 1/2" - 3"	25	25
375 Ⓞ	4" - 2"	25	35
376 Ⓞ	4" - 2 1/2"	25	35
377 Ⓞ	4" - 3"	25	35
378 Ⓞ	4" - 3 1/2"	25	35

Ⓞ Not UL Listed.

CONCRETE SLAB INSERTS – 90 DEGREE

Applications:

- For use with rigid and IMC
- For conduit installed in poured concrete slabs
- 90 degree design eliminates the need to bend conduit
- Provides flush threaded conduit hub for connecting rigid and IMC conduit and allows future access to conduit system
- Used in in-slab ceiling and floor poured applications

Standard Material:

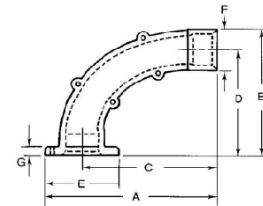
- Zinc die cast



Cat. #	EMT	Unit Qty.	Wt. Lbs. Per 100
ESL75	3/4"	5	41
ESL100	1"	5	57

Dimensions (in inches):

Cat. #	A	B	C	D	E	F	G
ESL75	4.55	3.72	3.49	3.15	2.13	1.14	0.20
ESL100	4.68	3.84	3.46	3.10	2.44	1.47	0.19



Rigid/intermediate grade conduit fittings

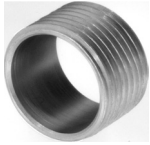
Reducers & plugs

Rigid fittings

CONDUIT REDUCERS – STEEL/IRON

Applications:

- Reduces the threaded opening on conduit bodies or any female threaded fitting
- Smooth pulling surface



Cat. #	Size	Unit qty.	Wt. lbs. per 100
Steel			
251	3/4" - 1/2"	50	4
252	1" - 1/2"	25	13
253	1 1/4" - 1/2"	10	30
254	1 1/2" - 1/2"	10	43
255	2" - 1/2"	5	83
260	1" - 3/4"	25	7
261	1 1/4" - 3/4"	10	23
262	1 1/2" - 3/4"	10	40
263	2" - 3/4"	5	79
268	1 1/4" - 1"	10	18
269	1 1/2" - 1"	10	27
270 S	2" - 1"	5	66
275	1 1/2" - 1 1/4"	10	13
276	2" - 1 1/4"	5	24
281	2" - 1 1/2"	5	27
Iron			
282	2 1/2" - 1"	10	120
283	2 1/2" - 1 1/4"	10	130
285	2 1/2" - 2"	10	150
288	3" - 1 1/2"	5	210
289	3" - 2"	2	160
290M	3" - 2 1/2"	5	120
291	3 1/2" - 2"	2	200
292	3 1/2" - 2 1/2"	2	225
293	3 1/2" - 3"	2	150
294	4" - 2"	2	270
295	4" - 2 1/2"	2	270
296	4" - 3"	2	260
297	4" - 3 1/2"	2	160
298	5" - 4"	1	385
299	6" - 5"	1	475

PLUGS – CAST IRON

Applications:

- Clean tapered threads
- Used to plug an unused threaded conduit opening
- Available in two styles, flush (recessed) or square head type

Recessed



Cat. #	Size	Unit qty.	Wt. lbs. per 100
PLG1M	1/2"	50	6
PLG2M	3/4"	50	11
PLG3M	1"	25	22
PLG4M	1 1/4"	25	34
PLG5M	1 1/2"	10	48
PLG6M	2"	10	82
PLG7M	2 1/2"	2	150
PLG8M	3"	2	222
PLG9M	3 1/2"	1	340
PLG10M	4"	1	380

Square head



Cat. #	Size	Unit qty.	Wt. lbs. per 100
PLG15M	1/2"	50	12
PLG25M	3/4"	50	16
PLG35M	1"	25	25
PLG45M	1 1/4"	25	34
PLG55M	1 1/2"	10	48
PLG65M	2"	10	80
PLG75M	2 1/2"	1	116
PLG85M	3"	1	185
PLG95M	3 1/2"	1	232
PLG105M	4"	1	310

Stainless steel fittings

Locknuts & bushings

Stainless steel fittings deliver unbeatable corrosion protection where you need it, saving you time and money throughout the life of your facility.

Superior resistance to corrosion and heat, combined with unmatched strength, make stainless steel fittings a long-term solution for even the most extreme environments.

Features:

- Self-healing properties of stainless steel fittings help reduce the penetration of rust/corrosion and eliminate damage to the fitting
- Stainless steel fittings retain their strength in extreme heat and extreme cold conditions
- Fitting surface is easy to maintain and keep clean
- Easy cleaning capabilities make these fittings perfect for food processing and other hygienic areas where wash downs are common
- Superior strength and durability greatly reduce replacement of fittings – this will lower your total cost of ownership and increase your return on investment
- Stainless steel fittings do not require harsh environment-damaging cleaners to keep them looking like new
- Stainless steel fittings are ideal for industrial MRO and OEM applications in food and beverage, pharmaceutical, petrochemical, wastewater, salt water and other corrosive environments

Standard materials:

- Fittings – 316 stainless steel
- Conduit, nipples, couplings and elbows – 316 stainless steel, 304 stainless steel
- Conduit hangers – 316 stainless steel, 301 stainless steel

LOCKNUTS



11SS

Features:

- 316 stainless steel locknuts can be used with conduit or NPS threaded pipe
- Precision machined threads allow for easy installation
- Heavy stock thickness and specially designed tabs tighten securely and will not easily loosen even in the most severe applications

Cat. #	Size	Unit qty.	Std. pkg.	Wt. lbs. per 100	Threads per inch
11SS	1/2"	1000	1000	2	14
12SS	3/4"	500	500	3	14
13SS	1"	500	500	5	11 1/2
14SS	1 1/4"	100	100	7	11 1/2
15SS	1 1/2"	100	100	10	11 1/2
16SST	2"	100	100	21	11 1/2



HEX HEAD REDUCING BUSHINGS



RBSS21

Cat. #	Size	Unit qty.	Std. pkg.	Wt. lbs. per 100	Length	Hex nut size
RBSS21	3/4" - 1/2"	100	100	15	0.95	1.20
RBSS31	1" - 3/2"	100	100	21	1.07	1.40
RBSS32	1" - 3/4"	100	100	17	1.07	1.40
RBSS51	1 1/2" - 1 1/2"	50	50	70	1.50	2.05
RBSS52	1 1/2" - 3/4"	50	50	68	1.50	2.05
RBSS53	1 1/2" - 1"	50	50	61	1.50	2.05
RBSS61	2" - 1 1/2"	25	25	81	1.30	2.42
RBSS62	2" - 3/4"	25	25	81	1.42	2.50
RBSS63	2" - 1"	25	25	81	1.32	2.43
RBSS65	2" - 1 1/2"	25	25	68	1.42	2.50

Stainless steel

Stainless steel fittings

Plugs, clamps & U-bolts

HEX HEAD PLUGS

Features:

- Used for closing threaded conduit hubs or openings
- NPT threads



PLG50SS

Standard materials:

- 316 stainless steel

Cat. #	Size	Unit qty.	Std. pkg.	Wt. lbs. per 100	Length	Hex nut size
PLG50SS	1/2"	100	100	11	1.00	0.93
PLG75SS	3/4"	100	100	16	1.03	1.17
PLG100SS	1"	100	100	25	1.16	1.51
PLG150SS	1 1/2"	50	50	58	1.62	2.10
PLG200SS	2"	50	50	100	1.56	2.60

RECESSED HEX HEAD PLUGS

Features:

- Used for closing threaded conduit hubs or openings
- NPT threads



PLG2SS

Standard materials:

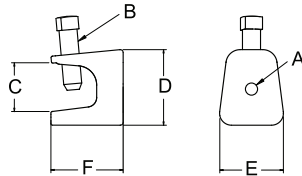
- 316 stainless steel

Cat. #	Size	Unit qty.	Std. pkg.	Wt. lbs. per 100	Length
PLG1SS	1/2"	50	50	6	0.84
PLG2SS	3/4"	50	50	10	1.05
PLG3SS	1"	25	25	21	1.32
PLG4SS	1 1/4"	25	25	35	1.67
PLG5SS	1 1/2"	10	10	44	1.91
PLG6SS	2"	10	10	84	2.38

BEAM CLAMPS



531SST



Features:

- This heavy duty "electrician's" style beam clamp is cast in stainless for superior strength and corrosion resistance
- Designed for use on I-beams, channels and other structural members, this beam clamp provides firm fixturing without drilling holes
- Attachment holes in the back and bottom permit a wide variety of applications

Standard materials:

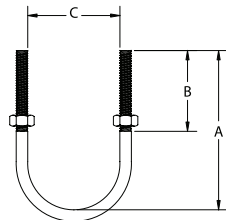
- 316 stainless steel

Cat. #	Size	Unit qty.	Std. pkg.	Wt. lbs. per 100	A	B	C	D	E	F
531SST	1 1/8"	50	50	25	1/4" - 20	5/16" - 18	7/8"	1 3/8"	1"	1 5/16"
533SST	2"	25	25	80	3/8" - 16	1/2" - 13	1 3/16"	1 7/8"	1 7/8"	2"
534SST	2 1/4"	25	25	148	1/2" - 13	5/8" - 11	1 1/16"	2 3/16"	2 1/8"	2 1/4"

U-BOLTS



UBM50SS



Standard materials:

- 316 stainless steel

Cat. #	Size	Unit qty.	Std. pkg.	Wt. lbs. per 100	A	B	C	Size & pitch	Load rating (lbs.)
UBM50SS	1/2"	100	100	13	2.41"	1.50"	0.94"	5/16" - 18	950
UBM75SS	3/4"	100	100	14	2.73"	1.50"	1.15"	5/16" - 18	950
UBM100SS	1"	100	100	15	3.04"	1.50"	1.41"	5/16" - 18	950
UBM125SS	1 1/4"	50	50	16	3.16"	1.50"	1.76"	5/16" - 18	950
UBM150SS	1 1/2"	50	50	18	3.48"	1.50"	2.00"	5/16" - 18	950
UBM200SS	2"	50	50	30	4.30"	1.75"	2.49"	3/8" - 16	1250
UBM250SS	2 1/2"	50	50	34	4.80"	1.75"	2.99"	3/8" - 16	1250
UBM300SS	3"	50	50	38	5.36"	1.75"	3.61"	3/8" - 16	1250
UBM350SS	3 1/2"	50	50	40	5.80"	1.75"	4.11"	3/8" - 16	1250
UBM400SS	4"	50	50	45	6.50"	1.75"	4.61"	3/8" - 16	1250

Stainless steel

Stainless steel fittings

Nipples

CONDUIT NIPPLES

UL File No. E-324286



NPL50200 304SS



Cat. #	Size	Unit qty.	Std. pkg.	Wt. lbs. per 100
NPL50CL 304SS	1/2" x CLOSE	1	1	5
NPL50200 304SS	1/2" x 2"	1	1	12
NPL50250 304SS	1/2" x 2 1/2"	1	1	14
NPL50300 304SS	1/2" x 3"	1	1	18
NPL50350 304SS	1/2" x 3 1/2"	1	1	21
NPL50400 304SS	1/2" x 4"	1	1	24
NPL50500 304SS	1/2" x 5"	1	1	31
NPL50600 304SS	1/2" x 6"	1	1	38
NPL50800 304SS	1/2" x 8"	1	1	51
NPL501000 304SS	1/2" x 10"	1	1	66
NPL501200 304SS	1/2" x 12"	1	1	79
NPL50CL 316SS	1/2" x CLOSE	1	1	5
NPL50200 316SS	1/2" x 2"	1	1	12
NPL50250 316SS	1/2" x 2 1/2"	1	1	14
NPL50300 316SS	1/2" x 3"	1	1	18
NPL50350 316SS	1/2" x 3 1/2"	1	1	21
NPL50400 316SS	1/2" x 4"	1	1	24
NPL50500 316SS	1/2" x 5"	1	1	31
NPL50600 316SS	1/2" x 6"	1	1	38
NPL50800 316SS	1/2" x 8"	1	1	51
NPL501000 316SS	1/2" x 10"	1	1	66
NPL501200 316SS	1/2" x 12"	1	1	79
NPL75CL 304SS	3/4" x CLOSE	1	1	8
NPL75200 304SS	3/4" x 2"	1	1	14
NPL75250 304SS	3/4" x 2 1/2"	1	1	19
NPL75300 304SS	3/4" x 3"	1	1	23
NPL75350 304SS	3/4" x 3 1/2"	1	1	27
NPL75400 304SS	3/4" x 4"	1	1	30
NPL75500 304SS	3/4" x 5"	1	1	41
NPL75600 304SS	3/4" x 6"	1	1	50
NPL75800 304SS	3/4" x 8"	1	1	68
NPL751000 304SS	3/4" x 10"	1	1	83
NPL751200 304SS	3/4" x 12"	1	1	103
NPL75CL 316SS	3/4" x CLOSE	1	1	8
NPL75200 316SS	3/4" x 2"	1	1	14
NPL75250 316SS	3/4" x 2 1/2"	1	1	19
NPL75300 316SS	3/4" x 3"	1	1	23
NPL75350 316SS	3/4" x 3 1/2"	1	1	27
NPL75400 316SS	3/4" x 4"	1	1	30
NPL75500 316SS	3/4" x 5"	1	1	41
NPL75600 316SS	3/4" x 6"	1	1	50
NPL75800 316SS	3/4" x 8"	1	1	68
NPL751000 316SS	3/4" x 10"	1	1	83
NPL751200 316SS	3/4" x 12"	1	1	103
NPL100CL 304SS	1" x CLOSE	1	1	13
NPL100200 304SS	1" x 2"	1	1	23
NPL100250 304SS	1" x 2 1/2"	1	1	26
NPL100300 304SS	1" x 3"	1	1	31
NPL100350 304SS	1" x 3 1/2"	1	1	41
NPL100400 304SS	1" x 4"	1	1	51
NPL100500 304SS	1" x 5"	1	1	62
NPL100600 304SS	1" x 6"	1	1	72
NPL100800 304SS	1" x 8"	1	1	97
NPL1001000 304SS	1" x 10"	1	1	135
NPL1001200 304SS	1" x 12"	1	1	152
NPL100CL 316SS	1" x CLOSE	1	1	13
NPL100200 316SS	1" x 2"	1	1	23
NPL100250 316SS	1" x 2 1/2"	1	1	26
NPL100300 316SS	1" x 3"	1	1	31
NPL100350 316SS	1" x 3 1/2"	1	1	41
NPL100400 316SS	1" x 4"	1	1	51
NPL100500 316SS	1" x 5"	1	1	62
NPL100600 316SS	1" x 6"	1	1	72

Stainless steel

Features:

- Designed for use with stainless threaded rigid conduit
- These nipples are polished to a bright finish for increased corrosion resistance and improved appearance

Cat. #	Size	Unit qty.	Std. pkg.	Wt. lbs. per 100
NPL100800 316SS	1" x 8"	1	1	97
NPL1001000 316SS	1" x 10"	1	1	135
NPL1001200 316SS	1" x 12"	1	1	152
NPL125CL 304SS	1 1/4" x CLOSE	1	1	20
NPL125200 304SS	1 1/4" x 2"	1	1	25
NPL125250 304SS	1 1/4" x 2 1/2"	1	1	34
NPL125300 304SS	1 1/4" x 3"	1	1	43
NPL125350 304SS	1 1/4" x 3 1/2"	1	1	51
NPL125400 304SS	1 1/4" x 4"	1	1	61
NPL125500 304SS	1 1/4" x 5"	1	1	81
NPL125600 304SS	1 1/4" x 6"	1	1	96
NPL125800 304SS	1 1/4" x 8"	1	1	132
NPL1251000 304SS	1 1/4" x 10"	1	1	200
NPL1251200 304SS	1 1/4" x 12"	1	1	201
NPL125CL 316SS	1 1/4" x CLOSE	1	1	20
NPL125200 316SS	1 1/4" x 2"	1	1	25
NPL125250 316SS	1 1/4" x 2 1/2"	1	1	34
NPL125300 316SS	1 1/4" x 3"	1	1	43
NPL125350 316SS	1 1/4" x 3 1/2"	1	1	51
NPL125400 316SS	1 1/4" x 4"	1	1	61
NPL125500 316SS	1 1/4" x 5"	1	1	81
NPL125600 316SS	1 1/4" x 6"	1	1	96
NPL125800 316SS	1 1/4" x 8"	1	1	132
NPL1251000 316SS	1 1/4" x 10"	1	1	200
NPL1251200 316SS	1 1/4" x 12"	1	1	201
NPL150200 304SS	1 1/2" x 2"	1	1	25
NPL150250 304SS	1 1/2" x 2 1/2"	1	1	47
NPL150300 304SS	1 1/2" x 3"	1	1	53
NPL150350 304SS	1 1/2" x 3 1/2"	1	1	64
NPL150400 304SS	1 1/2" x 4"	1	1	75
NPL150500 304SS	1 1/2" x 5"	1	1	88
NPL150600 304SS	1 1/2" x 6"	1	1	114
NPL150800 304SS	1 1/2" x 8"	1	1	151
NPL1501000 304SS	1 1/2" x 10"	1	1	176
NPL1501200 304SS	1 1/2" x 12"	1	1	243
NPL150200 316SS	1 1/2" x 2"	1	1	25
NPL150250 316SS	1 1/2" x 2 1/2"	1	1	47
NPL150300 316SS	1 1/2" x 3"	1	1	53
NPL150350 316SS	1 1/2" x 3 1/2"	1	1	64
NPL150400 316SS	1 1/2" x 4"	1	1	75
NPL150500 316SS	1 1/2" x 5"	1	1	88
NPL150600 316SS	1 1/2" x 6"	1	1	114
NPL150800 316SS	1 1/2" x 8"	1	1	151
NPL1501000 316SS	1 1/2" x 10"	1	1	176
NPL1501200 316SS	1 1/2" x 12"	1	1	243
NPL200200 304SS	2" x 2"	1	1	33
NPL200250 304SS	2" x 2 1/2"	1	1	47
NPL200300 304SS	2" x 3"	1	1	60
NPL200350 304SS	2" x 3 1/2"	1	1	80
NPL200400 304SS	2" x 4"	1	1	100
NPL200500 304SS	2" x 5"	1	1	127
NPL200600 304SS	2" x 6"	1	1	152
NPL200800 304SS	2" x 8"	1	1	204
NPL2001000 304SS	2" x 10"	1	1	254
NPL2001200 304SS	2" x 12"	1	1	305
NPL200200 316SS	2" x 2"	1	1	33
NPL200250 316SS	2" x 2 1/2"	1	1	47
NPL200300 316SS	2" x 3"	1	1	60
NPL200350 316SS	2" x 3 1/2"	1	1	80
NPL200400 316SS	2" x 4"	1	1	100
NPL200500 316SS	2" x 5"	1	1	127
NPL200600 316SS	2" x 6"	1	1	152
NPL200800 316SS	2" x 8"	1	1	204
NPL2001000 316SS	2" x 10"	1	1	254
NPL2001200 316SS	2" x 12"	1	1	305

Stainless steel fittings

Sealing gaskets & locknuts

SEALING GASKETS (ORDER SEPARATELY)

Applications:

- To form a raintight seal between a conduit fitting and the outside of a box

Features:

- Gasket is designed to provide superior sealing for customer applications
- Constructed of stainless steel to provide extreme durability in the most corrosive applications

Certifications and compliances:

- UL Listed
- cUL Listed

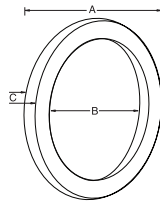


Standard materials:

- Ring – stainless steel
- Gasket – nitrile-butadiene rubber (NBR)

Standard finishes:

- Stainless steel – natural
- Nitrile-butadiene rubber (NBR) – natural



Trade size	Cat. #	Unit qty.	Wt. lbs. per 100	A	B	C
1/2"	SG1SS	50	50	1.125	0.813	0.188
3/4"	SG2SS	25	25	1.375	1.125	0.188
1"	SG3SS	25	25	1.625	1.313	0.188
1 1/4"	SG4SS	5	5	2.000	1.625	0.188
1 1/2"	SG5SS	5	5	2.250	1.875	0.188
2"	SG6SS	5	5	2.750	2.313	0.188

LOCKNUTS (ORDER SEPARATELY)

Applications:

- 316 stainless steel locknuts can be used with conduit or NPS threaded pipe

Features:

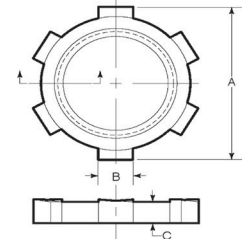
- Precision machined threads allow for easy installation
- Heavy stock thickness and specially designed tabs tighten securely and will not easily loosen even in the most severe applications

Standard material:

- Locknut – stainless steel

Standard finish:

- Stainless steel – natural



Trade size	Cat. #	Unit qty.	Wt. lbs. per 100	A	B	C	Threads/inch
1/2"	11SS	1000	2	1.313	0.250	0.190	14.000
3/4"	12SS	500	3	1.613	0.312	0.220	14.000
1"	13SS	500	5	1.863	0.380	0.260	11.500
1 1/4"	14SS	100	7	2.250	0.380	0.260	11.500
1 1/2"	15SS	100	10	2.562	0.438	0.270	11.500
2"	16SST	100	21	3.063	0.602	0.280	11.500

Stainless steel