

# Rigid/Intermediate Grade Conduit Fittings

## Insulating & Throat Bushings

Rigid Fittings

### THROAT BUSHINGS – MALLEABLE IRON

#### Threaded 105°C Rated Plastic Throat Liner

UL File No. E-19189



#### Insulated

| Cat. # | Size   | Unit Qty. | Wt. Lbs. Per 100 |
|--------|--------|-----------|------------------|
| 1031   | 1/2"   | 100       | 3                |
| 1032   | 3/4"   | 100       | 4                |
| 1033   | 1"     | 50        | 7                |
| 1034   | 1 1/4" | 50        | 15               |
| 1035   | 1 1/2" | 10        | 19               |
| 1036   | 2"     | 20        | 22               |
| 1037   | 2 1/2" | 10        | 44               |
| 1038   | 3"     | 10        | 54               |
| 1039   | 3 1/2" | 5         | 72               |
| 1040   | 4"     | 5         | 95               |
| 1041   | 5"     | 1         | 100              |
| 1042   | 6"     | 1         | 127              |

#### Threadless 105°C Rated Plastic Throat Liner

UL File No. E-19189



| Cat. # | Size   | Unit Qty. | Wt. Lbs. Per 100 |
|--------|--------|-----------|------------------|
| S1031  | 1/2"   | 100       | 3                |
| S1032  | 3/4"   | 100       | 4                |
| S1033  | 1"     | 50        | 7                |
| S1034  | 1 1/4" | 50        | 15               |
| S1035  | 1 1/2" | 10        | 19               |
| S1036  | 2"     | 20        | 22               |
| S1037  | 2 1/2" | 10        | 44               |
| S1038  | 3"     | 10        | 54               |
| S1039  | 3 1/2" | 5         | 72               |
| S1040  | 4"     | 5         | 95               |
| S1041  | 5"     | 1         | 100              |
| S1042  | 6"     | 1         | 127              |

### INSULATED THROAT BUSHINGS – MALLEABLE IRON

#### Features:

- Plastic liner will not chip, crack, swell or shrink; it resists corrosion, chemicals and temperature extremes

#### Standard Materials:

- Body – malleable iron
- Insuliner – ULTEM1000 rated at 150°C

#### Standard Finish:

- Body – zinc plated

#### Threaded 150°C Rated

UL File No. E-19189



| Cat. # | Size   | Unit Qty. | Wt. Lbs. Per 100 |
|--------|--------|-----------|------------------|
| H1031  | 1/2"   | 100       | 6                |
| H1032  | 3/4"   | 100       | 8                |
| H1033  | 1"     | 50        | 11               |
| H1034  | 1 1/4" | 50        | 14               |
| H1035  | 1 1/2" | 10        | 17               |
| H1036  | 2"     | 20        | 24               |
| H1037  | 2 1/2" | 10        | 51               |
| H1038  | 3"     | 10        | 62               |
| H1039  | 3 1/2" | 5         | 85               |
| H1040  | 4"     | 5         | 104              |
| H1041  | 5"     | 1         | 130              |
| H1042  | 6"     | 1         | 167              |

### INSULATED THROAT BUSHINGS

#### Threadless 150°C Rated Set Screw Type

UL File No. E-19189



| Cat. # | Size   | Unit Qty. | Wt. Lbs. Per 100 |
|--------|--------|-----------|------------------|
| HS1031 | 1/2"   | 100       | 6                |
| HS1032 | 3/4"   | 100       | 7                |
| HS1033 | 1"     | 50        | 10               |
| HS1034 | 1 1/4" | 50        | 13               |
| HS1035 | 1 1/2" | 10        | 15               |
| HS1036 | 2"     | 20        | 21               |
| HS1037 | 2 1/2" | 10        | 42               |
| HS1038 | 3"     | 10        | 51               |
| HS1039 | 3 1/2" | 5         | 65               |
| HS1040 | 4"     | 5         | 80               |
| HS1041 | 5"     | 1         | 100              |
| HS1042 | 6"     | 1         | 128              |

# Rigid/Intermediate Grade Conduit Fittings

## Insulated Bushings

### INSULATED THROAT BUSHINGS – ZINC DIE CAST

#### Features:

- Threaded

#### 150°C Rated – Zinc Die Cast

UL File No. E-19189



| Cat. #  | Size   | Unit Qty. | Wt. Lbs. Per 100 |
|---------|--------|-----------|------------------|
| H1031DC | 1/2"   | 100       | 2                |
| H1032DC | 3/4"   | 100       | 3                |
| H1033DC | 1"     | 50        | 5                |
| H1034DC | 1 1/4" | 50        | 7                |
| H1035DC | 1 1/2" | 20        | 9                |
| H1036DC | 2"     | 10        | 11               |
| H1037DC | 2 1/2" | 10        | 27               |
| H1038DC | 3"     | 5         | 33               |
| H1039DC | 3 1/2" | 5         | 39               |
| H1040DC | 4"     | 2         | 46               |

### NON-INSULATED THROAT BUSHINGS – ZINC DIE CAST

#### Features:

- Used with locknut to terminate threaded rigid conduit or IMC to enclosure
- Threaded



| Cat. # | Size   | Unit Qty. | Wt. Lbs. Per 100 |
|--------|--------|-----------|------------------|
| 1031DC | 1/2"   | 100       | 2                |
| 1032DC | 3/4"   | 100       | 3                |
| 1033DC | 1"     | 50        | 5                |
| 1034DC | 1 1/4" | 50        | 7                |
| 1035DC | 1 1/2" | 20        | 9                |
| 1036DC | 2"     | 10        | 10               |
| 1037DC | 2 1/2" | 10        | 26               |
| 1038DC | 3"     | 5         | 32               |
| 1039DC | 3 1/2" | 5         | 37               |
| 1040DC | 4"     | 2         | 43               |

Rigid Fittings

### NON-INSULATED THROAT BUSHINGS – MALLEABLE IRON

#### Features:

- Used with locknut to terminate threaded rigid conduit or IMC to enclosure
- Threaded



| Cat. # | Size   | Unit Qty. | Wt. Lbs. Per 100 |
|--------|--------|-----------|------------------|
| 1031NI | 1/2"   | 100       | 3                |
| 1032NI | 3/4"   | 100       | 4                |
| 1033NI | 1"     | 50        | 7                |
| 1034NI | 1 1/4" | 50        | 15               |
| 1035NI | 1 1/2" | 10        | 19               |
| 1036NI | 2"     | 20        | 22               |
| 1037NI | 2 1/2" | 10        | 44               |
| 1038NI | 3"     | 10        | 54               |
| 1039NI | 3 1/2" | 5         | 72               |
| 1040NI | 4"     | 5         | 95               |

### INSULATING BUSHINGS

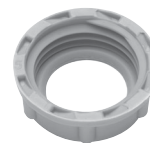
#### Features:

- Threaded

#### Standard Material:

- Plastic

UL File No. E-19189



| Cat. # Rated 105°C | Cat. # Rated 150°C | Size   | Unit Qty. | Wt. Lbs. Per 100 |
|--------------------|--------------------|--------|-----------|------------------|
| 931                | H 931              | 1/2"   | 50        | 1                |
| 932                | H 932              | 3/4"   | 50        | 1                |
| 933                | H 933              | 1"     | 50        | 2                |
| 934                | H 934              | 1 1/4" | 50        | 3                |
| 935                | H 935              | 1 1/2" | 25        | 3                |
| 936                | H 936              | 2"     | 25        | 4                |
| 937                | H 937              | 2 1/2" | 10        | 8                |
| 938                | H 938              | 3"     | 10        | 10               |
| 939                | H 939              | 3 1/2" | 5         | 11               |
| 940                | H 940              | 4"     | 5         | 11               |
| 941                |                    | 5"     | 5         | 40               |
| 942                |                    | 6"     | 5         | 42               |