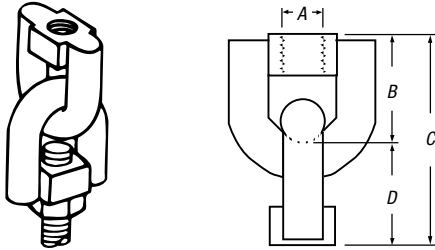


Hardware and Threaded Components

E122 Swivel Joint

Permits hanger rod to swing freely in any direction.



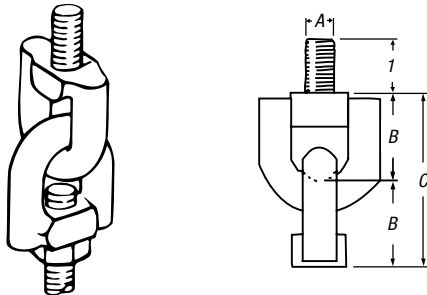
CAT. NO.	DIMENSIONS (IN.)			LOAD RATING	WT. LBS./C
	A	B	C		
E122 3/8	3/8-16	1 1/4	2 3/4	1,000	28
E122 1/2	1/2-13	1 1/2	3	1,800	48

Safety factor of 3.

Galv-Krom® finish.

E131 Swivel Joint with Stud

Same as H-260 but with a 3/8" or 1/2" stud on one end.



CAT. NO.	DIMENSIONS (IN.)			LOAD RATING	WT. LBS./C
	A	B	C		
E131 3/8	3/8-16	1 1/4	2 3/4	1,000	25
E131 1/2	1/2-13	1 1/2	3	1,800	52

Safety factor of 3.

Galv-Krom® finish.

H-134-S Spacer Assembly

Used for attaching fixture to channel with a uniform 1" clearance between fixture and supporting channel. Assembly includes a 1" spacer, a 3/8"-18 x 1 1/2" bolt and jam nut, all galvanized.



CAT. NO.	WT. LBS./C
H-134-S	21

Approved for G.S.A. installations.

E142 Hex Head Cap Screw — Less Nut



CAT. NO.	SIZES (IN.)	WT. LBS./C
E142 1/2 15/16	1/2-13 x 3/4	7.0
E142 1/2 15/16	1/2-13 x 1	9.0
E142 1/2 15/16	1/2-13 x 1	9.0
E142 1/2 1 1/4	1/2-13 x 1 1/4	9.0
E142 1/2 1 1/2	1/2-13 x 1 1/2	10.0
E142 1/2 2	1/2-13 x 1 3/4	13.0
E142 1/2 2	1/2-13 x 2	14.0
E142 1/2 2 1/4	1/2-13 x 2 1/4	16.0
E142 1/2 2 1/2	1/2-13 x 2 1/2	16.0
E142 1/2 3	1/2-13 x 3	20.0
E142 1/2 4	1/2-13 x 4	25.0
E142 3/8 3/4	3/8-16 x 3/4	3.0
E142 3/8 1	3/8-16 x 1	4.0
E142 3/8 1 1/4	3/8-13 x 1 1/4	4.0
E142 3/8 1 1/2	3/8-16 x 1 1/2	5.0
E142 3/8 2 1/4	3/8-16 x 1 3/4	6.0
E142 3/8 2 1/4	3/8-16 x 2 1/4	7.0
E142 3/8 2 1/4	3/8-16 x 2 1/4	7.0
E142 1/4 1	1/4 x 3/4	1.0
E142 1/4 1	1/4 x 1	1.0
E142 1/4 1 1/4	1/4 x 1 1/4	1.5
E142 1/4 1 1/2	1/4 x 1 1/2	2.0

Standard finish: Galv-Krom® unless otherwise specified.