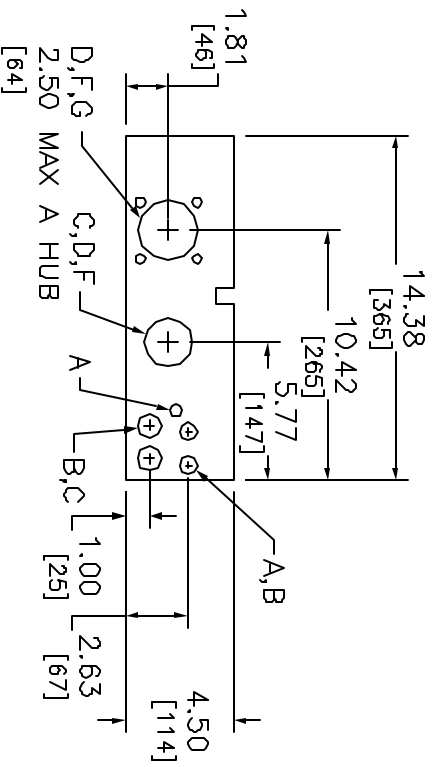
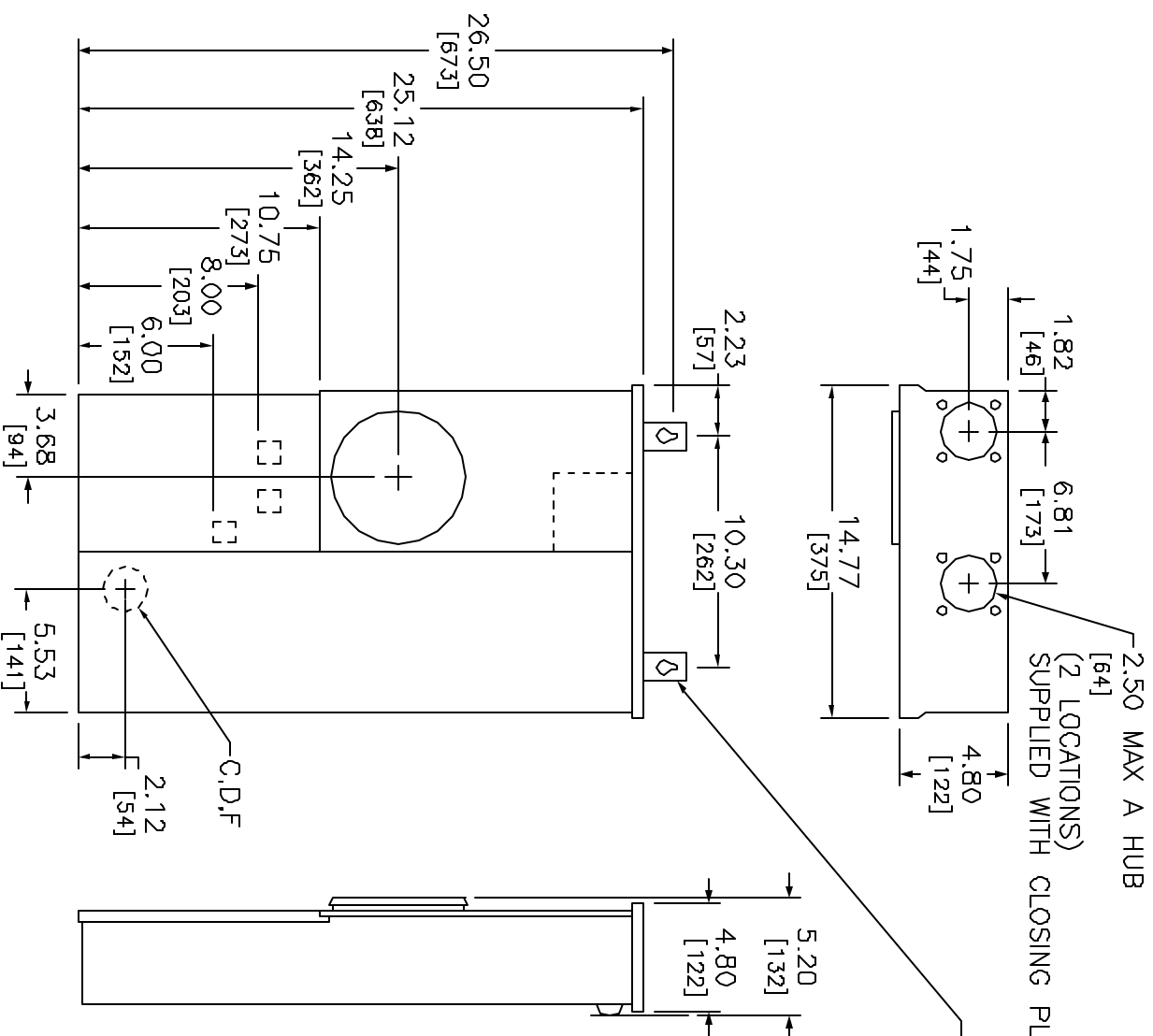
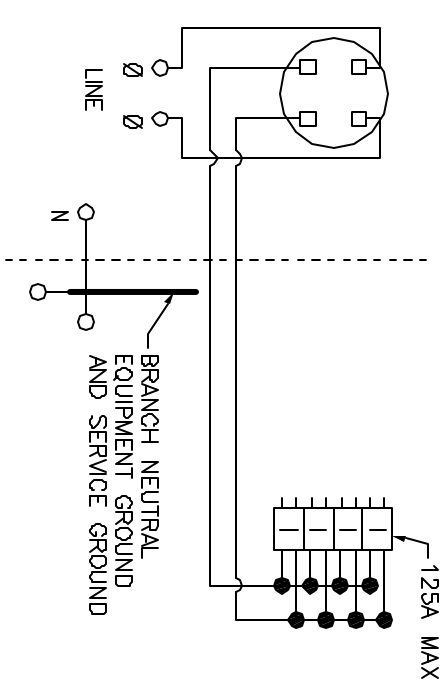
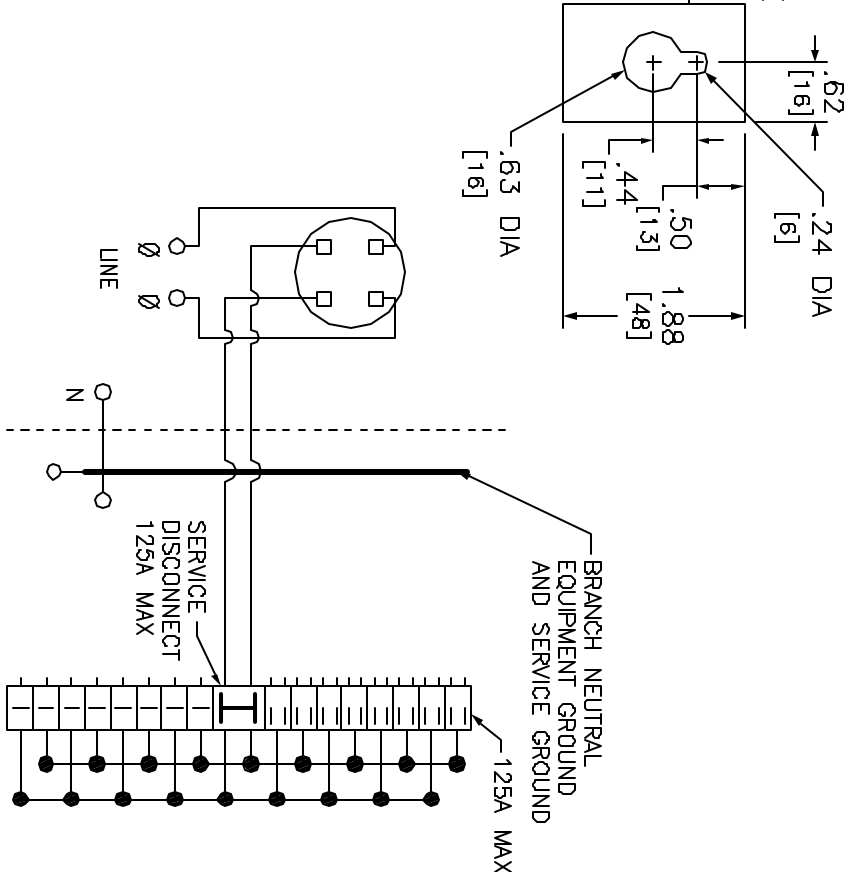


KNOCKOUTS		
SYMBOL	CONDUIT SIZE	MM
A	.50	13
B	.75	19
C	1.00	25
D	1.25	32
E	1.50	38
F	2.00	51
G	2.50	64



NOTES:
 FINISH - GRAY BAKED ENAMEL POWDER COAT PAINT OVER CLEANED GALVANNEALED STEEL.
 MAXIMUM SYSTEM VOLTAGE - 120/240 VAC 1PH 3W.
 UL LISTED - FILE E-6294
 SUITABLE ONLY FOR USE AS SERVICE EQUIPMENT.
 SUITABLE FOR UNDERGROUND/OVERHEAD SERVICE.
 MEETS EUSERC SPECIFICATIONS.



TWO SINGLE POLE, ONE PLUG-ON SPACE TYPE HOMT OR ONE SINGLE POLE, ONE PLUG-ON SPACE TYPE HOM, TWO POLE TYPE HOM, HOMA OR HOMT MAY PLUG-ON TWO ADJACENT SPACES. A 125A MAX CIRCUIT BREAKER MAY BE INSTALLED ONLY IN THE TOP POSITION IN THE BRANCH PANEL. ALL OTHER POSITIONS ARE LIMITED TO 100A MAX CIRCUIT BREAKER (#1 AWG MAX WIRE).

ONE SINGLE POLE, ONE PLUG-ON SPACE TYPE HOM ONLY. TWO POLE TYPE HOM MAY PLUG-ON TWO ADJACENT SPACES. BRANCH BREAKER IS LIMITED TO 100A MAX.

A SQUARE D UL LISTED SECONDARY SURGE ARRESTER MAY PLUG ON TWO ADJACENT SPACES. ORDER CATALOG NO. HOM21755B.

TWO POLE TYPE HOM AND HOMA ONLY. INSTALL NO MORE THAN FOUR CIRCUIT BREAKERS. A 125 AMP MAX. CIRCUIT BREAKER MAY BE INSTALLED ONLY IN THE TOP POSITION IN THE BRANCH PANEL. ALL OTHER POSITIONS ARE LIMITED TO 100 AMP MAX CIRCUIT BREAKER (#1 AWG MAX WIRE).

A SQUARE D UL LISTED SECONDARY SURGE ARRESTER MAY PLUG ON TWO ADJACENT SPACES. ORDER CATALOG NO. HOM21755B.

SC1624M100S
SC1624M125S

SCB8L125S

DUAL DIMENSIONS: INCHES MILLIMETERS

AMPERE RATING	FACTORY INSTALLED BYPASS TYPE	SHORT CIRCUIT CURRENT RATING	CATALOG NUMBER	SERIES	SPACES	MAXIMUM NUMBER OF SINGLE POLE HOM CIRCUITS	LINE SIDE PHASE & NEUTRAL LUGS AWG	LARGE BRANCH NEUTRAL AWG
100	NONE	10K	SC1624M100S	M01	16	24	#6-2/0 CU/AL	#6-2/0 CU/AL
125			SCB8L125S		8	SEE ABOVE WIRING DIAGRAM		
			SC1624M125S		16	24		

COMBINATION SERVICE ENTRANCE DEVICES
 RING TYPE
 RAINPROOF NEMA TYPE 3R ENCLOSURE
 SURFACE ONLY



Dwg# 3164