

CHANCE[®]

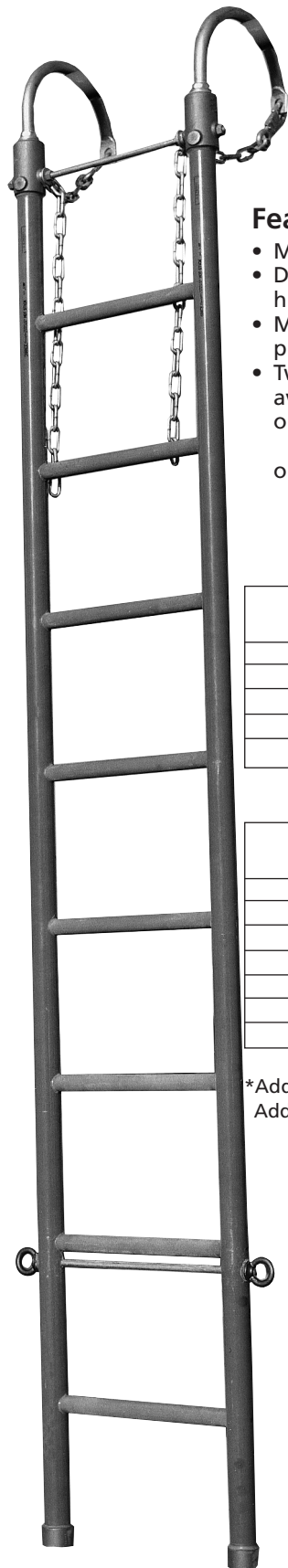
Ladders & Platforms

Catalog 2350 March 2020

Ladders & Platforms -2350



Epoxiglas® Swivel Hook Ladders



Features & Applications

- Meets ASTM F711 and IEC 61478 - Category 2
- Designed to effectively position linemen for high-voltage maintenance
- Make line repairs possible, even in inaccessible places
- Two basic styles of Epoxiglas Hook Ladders are available
 - o Regular Duty Ladders with 2" siderails for vertical suspension applications
 - o Heavy Duty Ladders with 2-1/2" siderails for tagged-out positions
- Hooks are formed from 1"-diameter tempered steel
- These hooks can be swiveled to best fit various angles on structure
- Ladders include 8"-dia. hooks
- 14" - or 18"-dia. hooks can be ordered for other structure applications
- Steel chains clip to hooks to assist in securing ladder to support
- Rung material for both rated ladders are 1-1/4" sand-coated Epoxiglas

REGULAR-DUTY HOOK LADDERS 2" SIDE RAILS

Catalog No. 8" Hooks*	Overall Length	Distance Between Side Rails	Weight
H49048	8'	14 1/2"	42 lb./18.9 kg.
H490410	10'	14 1/2"	46 lb./20.7 kg.
H490412	12'	14 1/2"	52 lb./23.4 kg.
H490414	14'	14 1/2"	60 lb./27.0 kg.
H490416	16'	14 1/2"	68 lb./30.6 kg.

HEAVY-DUTY HOOK LADDERS 2 1/2" SIDE RAILS

Catalog No. 8" Hooks*	Overall Length	Distance Between Side Rails	Weight
H49058	8'	14 1/2"	47 lb./21.2 kg.
H490510	10'	14 1/2"	55 lb./24.8 kg.
H490512	12'	14 1/2"	63 lb./28.4 kg.
H490514	14'	14 1/2"	70 lb./31.5 kg.
H490516	16'	14 1/2"	76 lb./34.2 kg.
H490518	18'	14 1/2"	85 lb./38.3 kg.
H490520	20'	14 1/2"	98 lb./44.1 kg.

*Add suffix "A" to catalog number for 14" hooks.
Add suffix "B" to catalog number for 18" hooks.

Rated Working Load per Hook	
8" hook	1250 lb.
14" hook	1000 lb.
18" hook	750 lb.

NOW CERTIFIED TO IEC 61478 - CATEGORY 2 TEMPORARY INSTALLATION

Includes full line offering

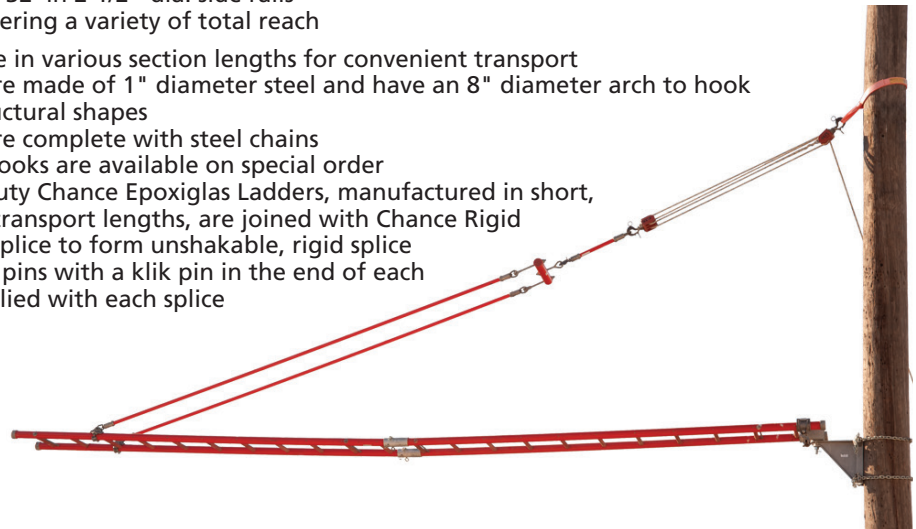
- Ladders: Swivel Hook, spliced and three-rail
- Brackets for poles and towers
- Accessories: clamps, hooks, spreader bar, swivel sticks
- Leakage-current monitor meter kits



Epoxiglas[®] Spliced Ladders

Features & Applications

- Meets ASTM F711 and IEC 61478 - Category 2
- Available in combinations of up to 32' in 2-1/2"-dia. side rails
- All splices are interchangeable, offering a variety of total reach
- Available in various section lengths for convenient transport
- Hooks are made of 1" diameter steel and have an 8" diameter arch to hook over structural shapes
- Hooks are complete with steel chains
- Larger hooks are available on special order
- Heavy-duty Chance Epoxiglas Ladders, manufactured in short, easy-to-transport lengths, are joined with Chance Rigid Ladder Splice to form unshakable, rigid splice
- Two eye pins with a klik pin in the end of each are supplied with each splice



SPICED, HEAVY-DUTY HOOK LADDERS — 2½" SIDE RAILS

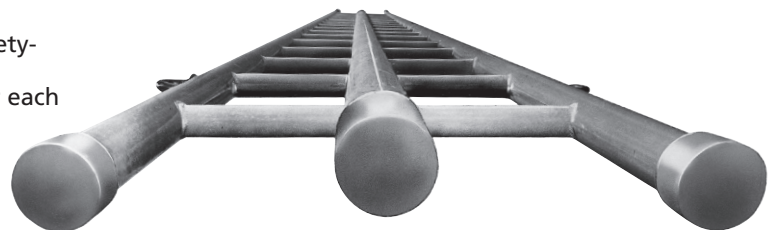
Catalog No.	Top Section Length	Weight
C4020482	10'	44 lb./19.8 kg.
C4020402	12'	48 lb./21.6 kg.
C4020404	14'	52 lb./23.4 kg.
C4020407	16'	56 lb./25.2 kg.
C4020411	20'	64 lb./28.8 kg.
T4020423	10' middle section	44 lb./19.8 kg.

Catalog No.	Bottom Section Length	Weight
C4020418	8'	28 lb./12.6 kg.
C4020421	10'	32 lb./14.4 kg.
C4020422	12'	36 lb./16.2 kg.

Three Rail Ladder

Features & Applications

- Meets ASTM F711 and IEC 61478 - Category 2
- Greater mechanical strength and less deflection enhance worker efficiency
- Designed for working in tagged-out position
- Third rail provides for a convenient, centered, safety-belt-tie
- Also divides ladder rung into natural positions for each foot placement
- Specifications include:
 - 2-1/2" center rail, capped on both ends
 - 2" side rails with 8" swivel hooks on top and caps on bottom end of rail
 - 1-1/4" sanded rungs
 - Steel tie rods top and bottom
 - Pinned sleeves on outside rails for spliced ladders with a 15-1/2" center
- Both straight and spliced ladder units are available



Fixed-Length (non-spliced) Ladder

Catalog No.	Description	Weight
C4020119	20' Straight Ladder	100 lb./45.0 kg.

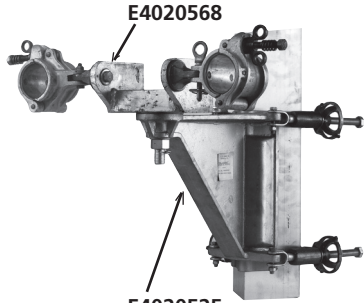
Three Ladder Yoke

Catalog No.	Description
PSC4020569	Yoke Assembly for Three Rail Ladder

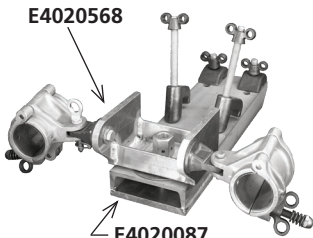
Spliced Ladders

C4020512	8' Bottom Section	43 lb./19.4 kg.
C4020513	12' Bottom Section	52 lb./23.4 kg.
C4020514	12' Top Section	62 lb./27.9 kg.

Ladder Support Attachments



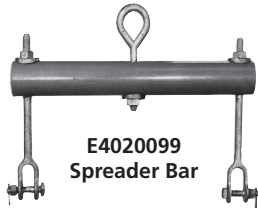
E4020525
Ladder Support Assembly
for Vertical Tower Member



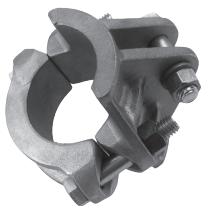
E4020087
Ladder Support Assembly
for Horizontal Tower Member



E4020526
Vertical Ladder Support
Attachment for Wood Poles



E4020099
Spreader Bar



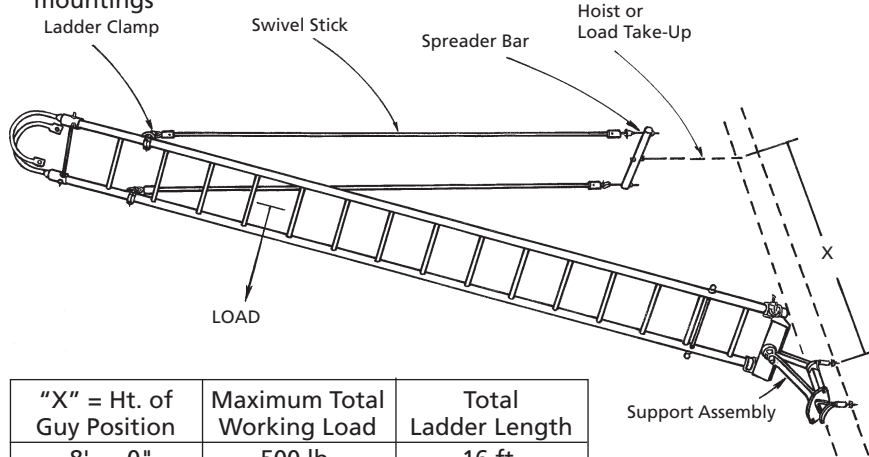
E4020138P
Ladder Clamp 2-1/2"



E4020092
Double Clamp
2 1/2" and 1 1/2" Diameter

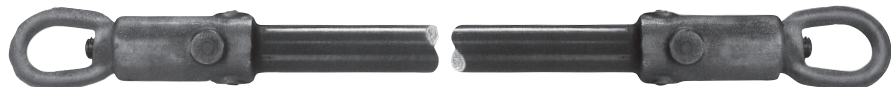
Features & Applications

- Quick, easy rigging on most types of structure
- Converts Chance Epoxiglas® ladder to a platform for live-line maintenance
- Sets are designed for steel or wood structures, vertical or horizontal
- Support the structure-end of the ladder in a tagged-out position
- Sets are designed for use on 2-1/2"-dia. side rail ladders
- Can be ordered as sets or individual components
- Diagram below shows a typical rigging and working loads with various guy mountings



"X" = Ht. of Guy Position	Maximum Total Working Load	Total Ladder Length
8' — 0"	500 lb.	16 ft.
12 — 0"	400 lb.	24 ft.
16' — 0"	300 lb.	32 ft.

Kits Consist Of Following:	C4020139 Ladder Support Kit For Vertical Attach. On Towers	C4020140 Ladder Support Kit For Horizontal Attach. On Tower	C4020155 Ladder Support Kit For Vertical Attach. On Wood or Steel Poles
E4020525 Vertical Attachment Tower	1		
E4020087 Horizontal Attachment Tower		1	
E4020526 Vertical Attachment Pole			1
E4020568 Yoke Assembly	1	1	1
E4020099 Spreader Bar	1	1	1
E4020138P Ladder Clamp 2-1/2"	2	2	2
E4020141 (Also see Swivel Stick *below)	2	2	2
E4020092 Double Clamp	1	1	1
Total Kit Weight	61.5 lb./27.7 kg.	50 lb./22.57 kg.	61.5 lb./27.7 kg.



*Swivel Sticks
(1 1/4" dia.)

Tested per OSHA & ASTM F711

Cat. No.	Length
*E4020141	12 1/2 ft.
*T4020899	6 ft.
*T4020900	8 ft.
*T4020901	10 ft.



Adjustable Ladder Hook

Features & Applications

- Easily attaches in one quick operation
- Position on Epoxiglas® side rail, swing bolt around and tighten wing nut
- Made of 1"-dia. heat-treated, rust-resistant steel
- Equipped with rugged chain and chain snap for positive lock between ladder and support
- Hooks are rated at 1,000 lbs. per pair



Catalog No.*			For Side Rail Dia.	Approx. Wt., Each†
8" Hook	14" Hook	18" Hook		
H49041	H49241	—	2"	7 lb./3.2 kg.
H49051	H49251	H49451	2½"	7 lb./3.2 kg.

* Catalog No. includes one (1) Hook, Chain, and Chain Snap.

† Weights listed are for an 8" Hook; 14" Hook 8½ lb. each; and for 18" Hook 14½ lb. each.

- Adjustable hooks can be used with Epoxiglas Hook Ladders to obtain a more convenient position
- Can be attached to an Epoxiglas Service Ladder for use as a temporary hook ladder
- Adjustable Hooks are ideal for suspension use for uneven or sloping supports

Ladder Monitor Kit

Features & Applications

- Used with EHV Barehand maintenance procedure to detect microamp leakage on ladder before use
- Meter connects to ladder and takes readings as ladder is placed in contact with conductor
- It is recommended that readings be taken periodically to ensure optimum working conditions, which can be altered by a change in atmosphere
- Kit includes:
 - o A 200 micro-amp scale microammeter
 - o 3 clamps for use with three-rail ladder
 - o A cable with clips and adapter to establish contact
 - o A bracket to ground and hold the meter on the structure
 - o 2 dry cell batteries
 - o Instruction drawings for field assembly
 - o Operating instructions



Catalog No.	Description	Weight
C4020288	Ladder Monitor Kit	7.5 lb./3.4 kg.

Chance Sentinel Leakage-Current Monitor

Features & Applications

- Alerts utility-line workers of overcurrent conditions
- For aerial devices, including insulated ladders and truck booms
- Sounds an alarm if leakage current reaches a pre-set level
- Leakage setting adjusts from 1 to 1,000 microamperes in resolution increments of 0.1 microamp
- Audible warning eliminates the need to watch LCD screen current level
- Alarm sounds upon overcurrent and continues until condition is corrected
- Jack on instrument panel accepts standard 1/4" two-conductor phone plug to trigger horn or other external alarm
- Panel test terminal permits continuity check of monitor leads prior to operation
- Before each use, instrument automatically performs rapid electronic self test
- Simple operating steps are printed on the inside lid panel



- Detailed instruction sheet also comes with each unit
- Kit includes 1 coaxial cable and battery, plus 2 jumpers and 3 hose clamps for connections to two- or three-rail ladders
- Brackets on box secure to an earth-grounded structure up to 5/8" thick, such as a transmission tower

Catalog No.	Description	Weight
C4070025	Chance Sentinel Kit	9 lb./4.05 kg.

Epoxiglas® Insulated Platforms

Features & Applications

- Unique design features 12" of clear insulation
- Two 2"-dia. orange Epoxiglas poles connect the platform to the mounting bracket
- No other platforms include these insulating members
- Manufactured to the same exacting standards as Chance hot-line tools: OSHA subpart V, section 1926.951(d) and ASTM 711
- Cleaning and care of Epoxiglas components are same as for Chance hot-line tools
- Maximum load rating, all platforms: 500 lbs.

Mounting Options & Accessories

- To provide convenient workstations for rubber-glove work on energized lines, these platforms quickly secure to pole with either of two mounts:
 - Fixed mount, for jobs that do not require frequent platform relocation, comes as part of each basic platform and includes a chain binder and wheel tightener
 - Pivot mount, optional for easy positioning to access jobs, permits worker to swivel the mounted platform on its horizontal plane
- For belt-on/restraining guide, add optional Tripod or Railing
- For improved footing, three strips of 2" non-skid tape extend the length of the platform

4-ft. Insulated Platform

Epoxiglas Tripod and Pivot Base must be ordered as separate items.



6-ft. Insulated Platform

Epoxiglas Railing and Pivot Base each must be ordered as separate items.



Each Epoxiglas Insulated Platform listed below is 10" wide and furnished with a Fixed Pole Mount

Catalog No.	Description	Weight
C4021042	4-ft. Insulated Platform	49 lb./22 kg.
C4021043	6-ft. Insulated Platform	56 lb./25.2 kg.
C4021079	8-ft. Insulated Platform	60 lb./27 kg.

Standard Aerial Platforms



4-ft. Standard Aerial Platform
Epoxiglas Tripod must be ordered as separate item.



6-ft. Standard Aerial Platform
Epoxiglas Railing must be ordered as separate item.

Features & Applications

- Designed to provide a convenient workstation on an aerial structure
- Quickly mount on structure to help place linemen in correct working position

Mounting Options & Accessories

- Feature a Fixed Pole Mount for jobs that do not require frequent platform relocation
- Pivot Mounts (available below as optional accessories) allow platform to be swiveled on its horizontal plane for different positions
- For belt-on and as restraining guides for workers, Epoxiglas Tripods or Railings may be added – see page 2357
- For improved footing, three strips of 2" non-skid tape extend the length of the platform
- Bare section near mounting end helps reduce moisture accumulation
- Also provides an area between the working surface and the mount fittings that can be readily wiped clean of dirt and moisture when necessary

Maximum Load Rating, all platforms: 500 lb.

Each Standard Aerial Platform listed below is 10" wide and furnished with a Fixed Pole Mount

Catalog No.	Description	Weight
H496442W	42-in. Standard Platform	40 lb./18 kg.
H49644W	4-ft. Standard Platform	49 lb./22 kg.
H49646W	6-ft. Standard Platform	56 lb./25.2 kg.
H49648W	8-ft. Standard Platform	71 lb./32 kg.

Each Standard Aerial Platform below is 10" wide and furnished with an Epoxiglas Railing & Fixed Pole Mount

Catalog No.	Description	Weight
T4020632	10-ft. Standard Platform	86 lb./39.7 kg.
T4020619	12-ft. Standard Platform	105 lb./47.3 kg.



Platform Mounting Attachments

Fixed Pole Mount – fits all Chance platforms except Suspension model

Catalog No.	Description	Weight
M490110W	Fixed Pole Mount for Platform	9 lb./4.1 kg.

M490110W
includes 30" chain binder
with self-locking handwheel and
one hinge pin.



Fixed Tower Mount – fits all Chance platforms except Suspension model
For attachment to tower legs 3½" x 3½" to 8" x 8"

Catalog No.	Description	Weight
M490121	Fixed Tower Mount for Platform	10 lb./4.5 kg.



M490121 for towers

Pivot Mounts for Poles – fit all Chance platforms except Utility model

Features & Applications

- Handwheel on top and interlocking teeth on two pivot plates provide simple, sure adjustment to work angle needed
- Two sizes vary in height to fit all applicable platforms as listed
- Pivot range permits 140° adjustment in increments of approximately 9° per tooth on matching plates

- Turning handle raises and lowers upper plate
- Stainless-steel guide pin keeps plates aligned
- Groove in upper plate centers on rib in base to ensure teeth engagement at every angle setting

Catalog No.	Description	Weight
C4021164	Pivot Base for 42" or 4' Platform	28¼ lb./12.7 kg.
C4021173	Pivot Base for 6' or 8' Platform	29¼ lb./13.2 kg.

Each Pivot Base includes two 30" chain binders with self-locking handwheels and one hinge pin.



Platform Tripods and Railings

Epoxiglas® construction adds belt-on capability and restraining guide for lineworkers. Note specific applications below.

Tripod Railings

– fit Insulated and Standard Aerial models as listed
(for Suspension model tripod, consult factory)

Catalog No.	Description	Weight
H4964	Tripod for 4-ft. Insulated model only	9 lb./4.1 kg.
T4021195	Tripod for 42-in. or 4-ft. Standard model	9 lb./4.1 kg.

Platform Railings

– fit Insulated and Standard Aerial models as listed

Catalog No.	Description	Weight
C4021055	Railing for 4-ft. Insulated Platform*	13 lb./5.9 kg.
C4020023	Railing for all 6-ft. Chance Platforms	15 lb./6.8 kg.
C4020024	Railing for all 8-ft. Chance Platforms	17 lb./13.5 kg.

*except Suspension model

Platform Ladder

Features & Applications

- Allows workers to stand or sit at worksite instead of kneeling on structure
- Convenient and efficient
- Proven products combine in Chance Platform Ladder: 48"-long Epoxiglas® Ladder and two 20"-long sections of 10"-wide Platform joined side-by-side constitute a bosun's chair
- Adjustable ladder hooks may be added (see Catalog page 2355)
- Platform Ladder may be suspended and tagged-off with rope, wire tongs or a combination of both in order to maneuver a worker into position
- Platform Ladder folds into a compact package for quick rigging and easy storage
- Although rated for 500-lb. loads, users must give serious consideration to capacity of the point from which it is suspended and the equipment used to suspend it
- For improved footing, three strips of 2" non-skid tape extend the length of the platform



Catalog No.	Description	Weight
C4020276	Platform Ladder, no hooks	36 lb./16.2 kg.

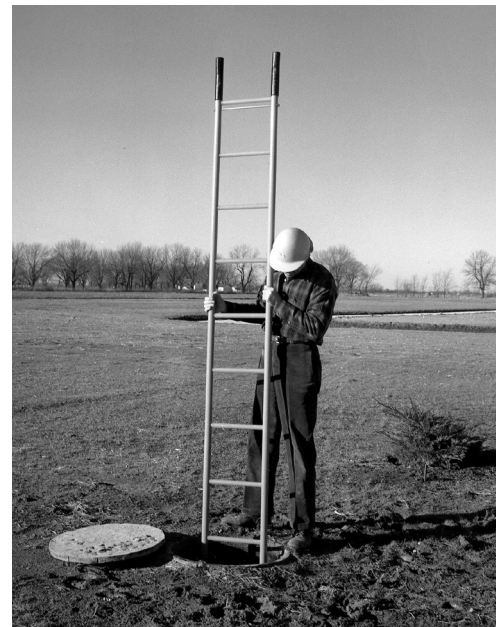
Epoxiglas® Service Ladders

Features & Applications

- Offer greater safety when working around energized lines
- Easier to transport – much lighter than comparable wood ladders
- Spacing between side rails and rungs meets largest central station and telephone company specifications
- Side rails of 1-1/2"-dia. Epoxiglas are plastic-covered at top for cushioning
- Rubber feet are supplied on bottom end
- Rungs are of 13/16"-dia. glass fiber

Rated for loads, 250 lbs.

Catalog No.	Overall Length	Spacing Between Side Rails	Approx. Wt., Ea.
H4903M10	10'-1"	12"	16 lb.
H4903M12	12'-1"	12"	19 lb.
H4903M8	8'-1"	12"	13 lb.



HUBBELL®
Power Systems, Inc.

• 210 N. Allen St. • Centralia, MO 65240 • (573) 682-5521

NOTICE: For the latest revision of our Catalog and Literature, click here or visit our web site: www.hubbellpowersystems.com

NOTE: Hubbell has a policy of continuous product improvement. Please visit hubbellpowersystems.com to confirm current design specifications. ©Copyright 2020 Hubbell Incorporated

NEVER COMPROMISE™

www.hubbellpowersystems.com

