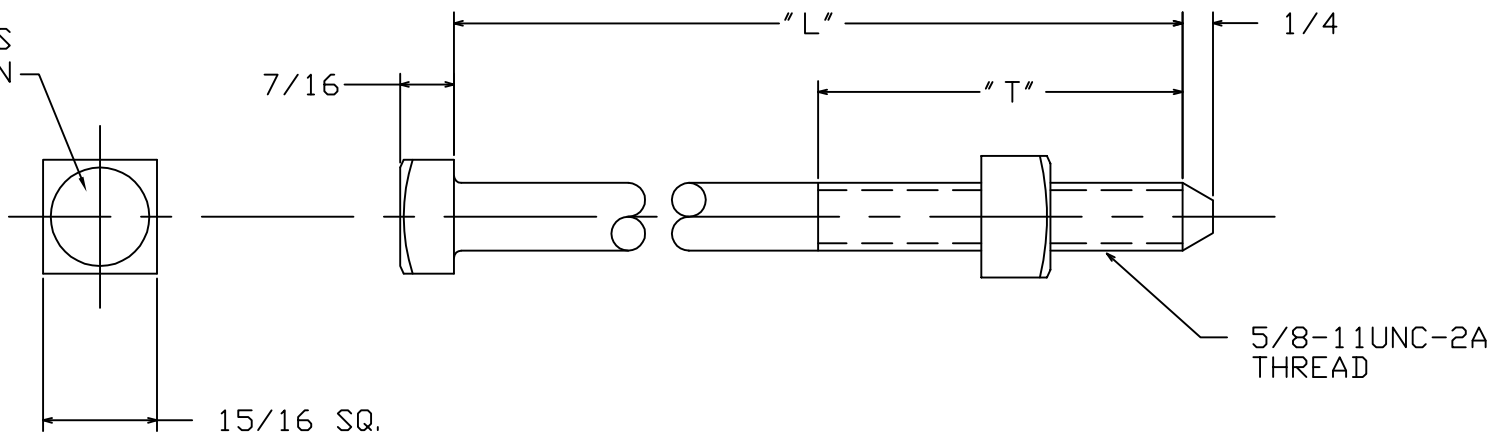



MANUFACTURER'S IDENTIFICATION



CATALOG NUMBER	"L"	"T"
8802	2-1/2	1-1/2
PS8803	3	1-1/2
8804	4	3
8805	5	3
8806	6	3
8807	7	4
8808	8	4
8809	9	4
8810	10	6
8812	12	6
8814	14	6
8816	16	6
8818	18	6
8820	20	6
8822	22	6
8824	24	6
8826	26	6
8828	28	6
8830	30	6
8832	32	6

==NOTES==

1. MATERIAL: STEEL, HOT DIP GALVANIZE PER ASTM A153 (LATEST REV).
2. BOLT AND NUT ASSEMBLY MEETS THE ANSI MINIMUM TENSILE LOAD OF 12,400 LBS AND THE 180° BEND TEST.

CHANCE TOLERANCE CHART		 <b>HUBBELL POWER SYSTEMS</b>	
<small>CONFIDENTIAL: THIS DRAWING AND ITS CONTENTS ARE CONFIDENTIAL AND THE EXCLUSIVE PROPERTY OF HUBBELL POWER SYSTEMS. NO PUBLICATION, DISTRIBUTION OR COPIES MAY BE MADE WITHOUT THE WRITTEN CONSENT OF HUBBELL POWER SYSTEMS. HUBBELL POWER SYSTEMS UNPUBLISHED ALL RIGHTS RESERVED UNDER THE COPYRIGHT LAWS.</small>		TITLE <b>5/8 MACHINE OR CROSSARM BOLT</b>	
		SIZE <b>SB SA8802</b>	DWG NO. CAT / PART / ASSY NO. <b>SEE CHART</b>
DO NOT SCALE THIS DRAWING	DRN BY JOBE	DATE 10/06/03	REV D SHEET 01 OF 01