

Internationally Rated Conventional-Styled Devices

Twist-Lock® Devices, Ship-To-Shore Power System

Description	16A 230V	32A 230V, 50 Cycle
Non-metallic, white, stylized, UV resistant shore power inlet. White Centrex® cover makes the inlet weatherproof when closed. Mounting holes are 2.38 in. (60.3) on centers and match most existing mounting patterns. Rear enclosure strain/relief cap is provided. IP55 suitability.	HBL316NM	HBL332NM
Traditional, stainless steel shore power inlet has easy-to-wire terminations. Interior is transparent for quick and easy visual inspection. Interior is shielded from the elements by a gasketed, self-closing cover, watertight when cover is screwed in place. Mounting holes are 2.38 in. (60.3) on centers. Mounting screws and gasket included. Protective rear enclosure/strain relief also included. IP56 suitability.	HBL316SSX	HBL332SSX
Yellow locking connector replacement end for HBL316CS25 and HBL316CS. IP20 suitability.	HBL316CRCX	HBL332CRCX
White Seal-Tite® cover with threaded sealing ring for use with HBL316CRC and HBL332CRC connector bodies. IP56 suitability.	HBL60CM33W	HBL60CM33W
White Seal-Tite® cover with threaded sealing ring for use with HBL316CRC and HBL332CRC connector bodies. IP56 suitability.	HBL60CM33	HBL60CM33



HBL316NM
HBL332NM



HBL316SSX
HBL332SSX



HBL316CRCX
HBL332CRCX



HBL60CM33
HBL60CM33W



HBL363SSX



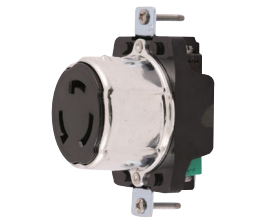
63A
230V



HBL363CRP



HBL363CRC



HBL363CRR

63A 230V Ship-To-Shore Power Systems

Description	Catalog Number
Traditional, stainless steel shore power inlet, including higher-quality metal threads, heat-resistant interior and box lug terminals. IP56 suitability.	HBL363SSX
Nickel plated brass plug with heat-resistant interior and box lug terminals cord grip range is .44 - 1.14 in. (11.1 - 29.0). IP55 suitability.	HBL363CRP
Nickel plated brass connector body with heat-resistant interior and box lug terminals. Cord grip range is .44 - 1.14 in. (11.1 - 29.0). IP55 suitability.	HBL363CRC
Single receptacle with heat-resistant base. IP20 suitability.	HBL363CRR
Yellow Seal-Tite® cover for connector bodies when used with 63A shore power inlets. Stainless steel threaded sealing ring makes connections watertight. IP56 suitability.	HBL77CM15
Same as HBL77CM15 except white in color.	HBL77CM15W
Yellow Seal-Tite® cover for 63A plugs. IP55 suitability.	HBL77CM16
Same as HBL77CM16 except white in color.	HBL77CM16W



HBL77CM15



HBL77CM16W

Centrex® is a registered trademark of LANXESS Corporation.

Dimensions in Inches (mm)